

Steer Test (34)



Live WT 1235
Carcass WT 774
Dressing % 62
FOE Adjusted .3
PYG 2.8
REA 14 / -.3

KPH% 2.5 / -.2
Marbling S160
Maturity A
QG Se+
YG 2.3



Steer 1 (50)

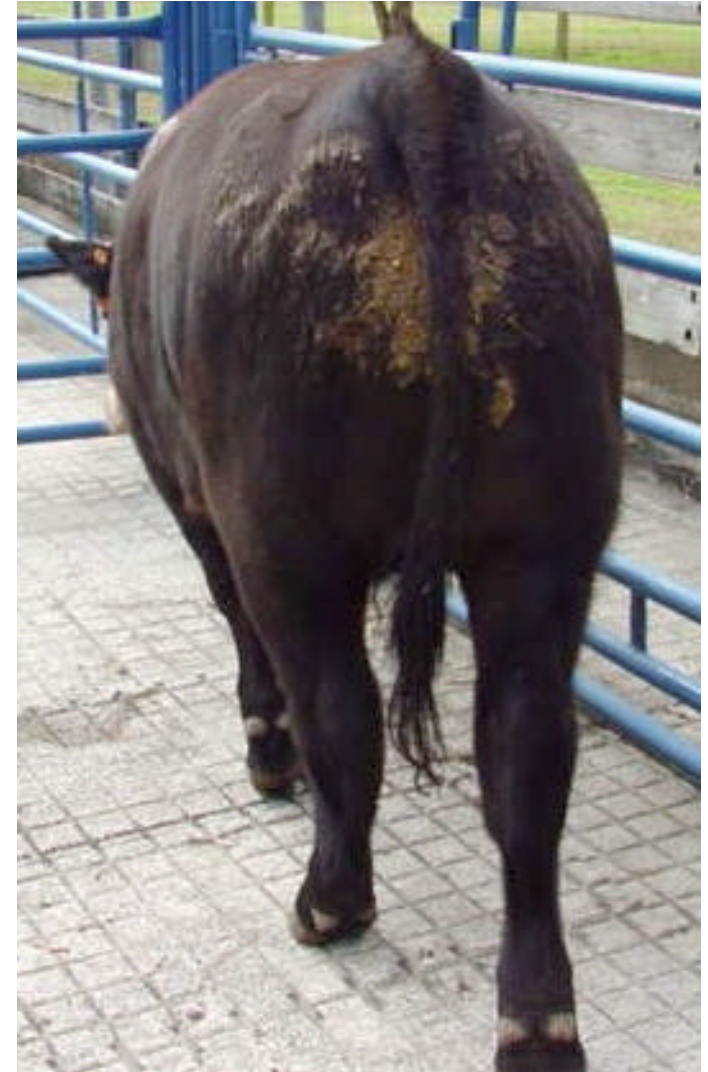


Live WT 1375
Carcass WT 868
Dressing % 63
FOE Adjusted .65
PYG 3.6
REA 11.2 / +.9

KPH% 2.5 / -.2
Marbling Sm30
Maturity A
QG C-
YG 4.3



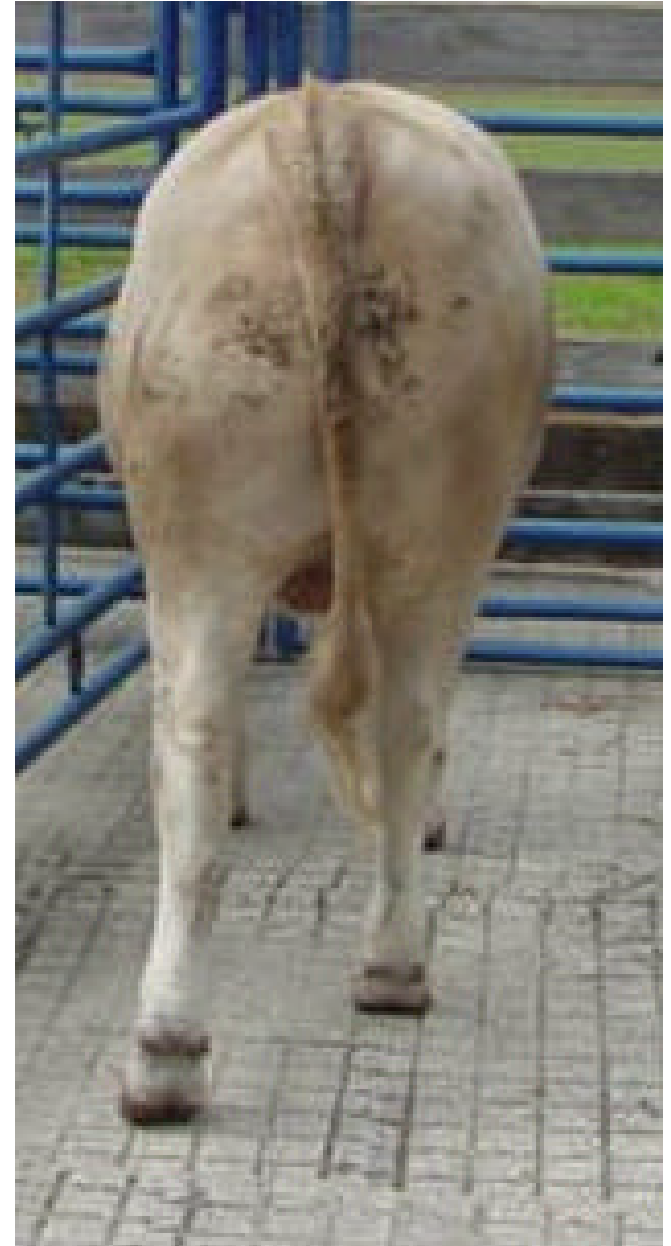
Steer 2 (36)



Live WT- 1210
Carcass WT-722
Dressing %- 59%
FOE Adjusted -.5
PYG- 3.2
REA – 12.9 / -.2

KPH%- 2 / -.3
Marbling – S180
Maturity- A
QG- Se+
YG- 2.7

Steer 3 (35)



Live WT 1260
Carcass WT 801
Dressing % 63
FOE Adjusted .6
PYG 3.5
REA 12.5 / +.3

KPH% 2.5 / -.2
Marbling S190
Maturity A
QG Se+
YG 3.6

Steer 4 (48)



Live WT 1225
Carcass WT 753
Dressing % 61
FOE Adjusted .55
PYG 3.4
REA 11.8 / +.3

KPH% 2 / -.3
Marbling Sm20
Maturity A
QG C-
YG 3.4

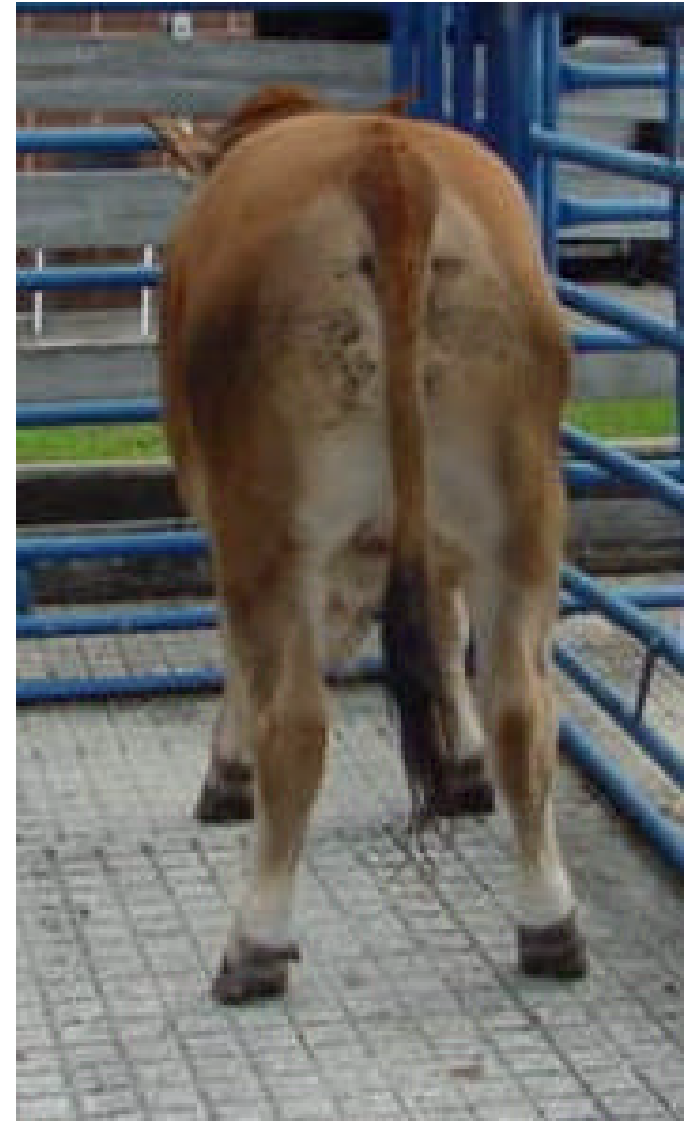
Steer 5 (5)



Live WT 970
Carcass WT 555
Dressing % 57
FOE Adjusted .2
PYG 2.5
REA 12 / -.5

KPH% 2.5 / -.2
Marbling Sm20
Maturity A
QG C-
YG 1.8

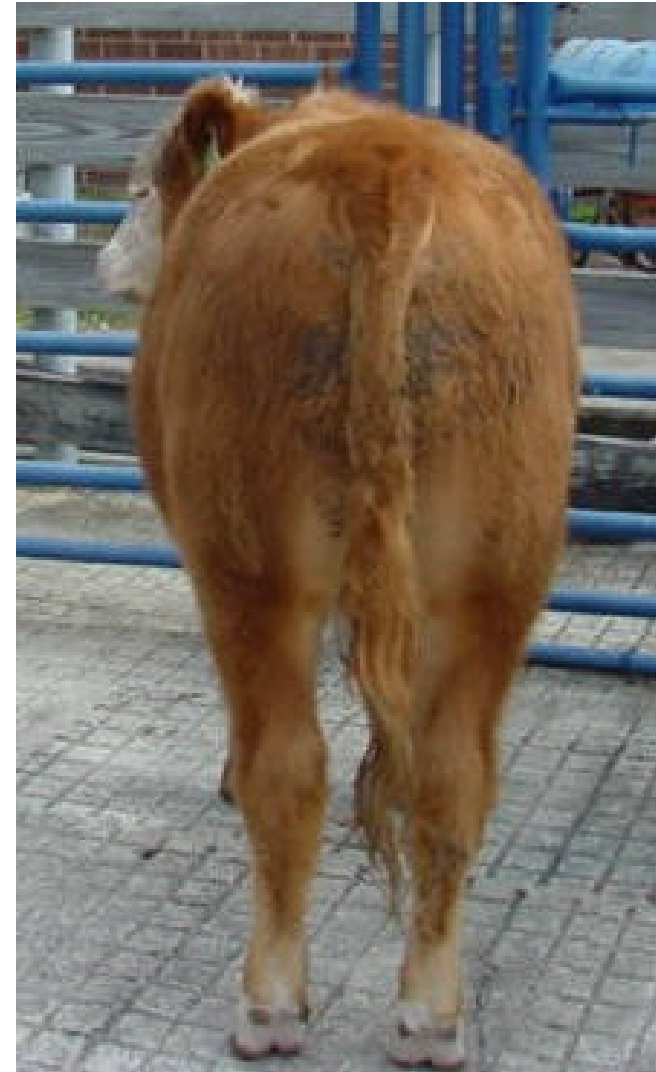
Steer 6 (14)



Live WT 1030
Carcass WT 607
Dressing % 58
FOE Adjusted .35
PYG 2.9
REA 11.8 / -.2

KPH% 2.5 / -.2
Marbling Sm30
Maturity A
QG C-
YG 2.5

Steer 7 (19)



Live WT 925
Carcass WT 512
Dressing % 55
FOE Adjusted .4
PYG 3.0
REA 10.8 / -.3

KPH% 2 / -.3
Marbling S160
Maturity A
QG Se+
YG 2.4

Steer 8 (24)



Live WT 1015
Carcass WT 597
Dressing % 58
FOE Adjusted .4
PYG 3.0
REA 11 / 0

KPH% 1.5 / -.4
Marbling Sm10
Maturity A
QG C-
YG 2.6