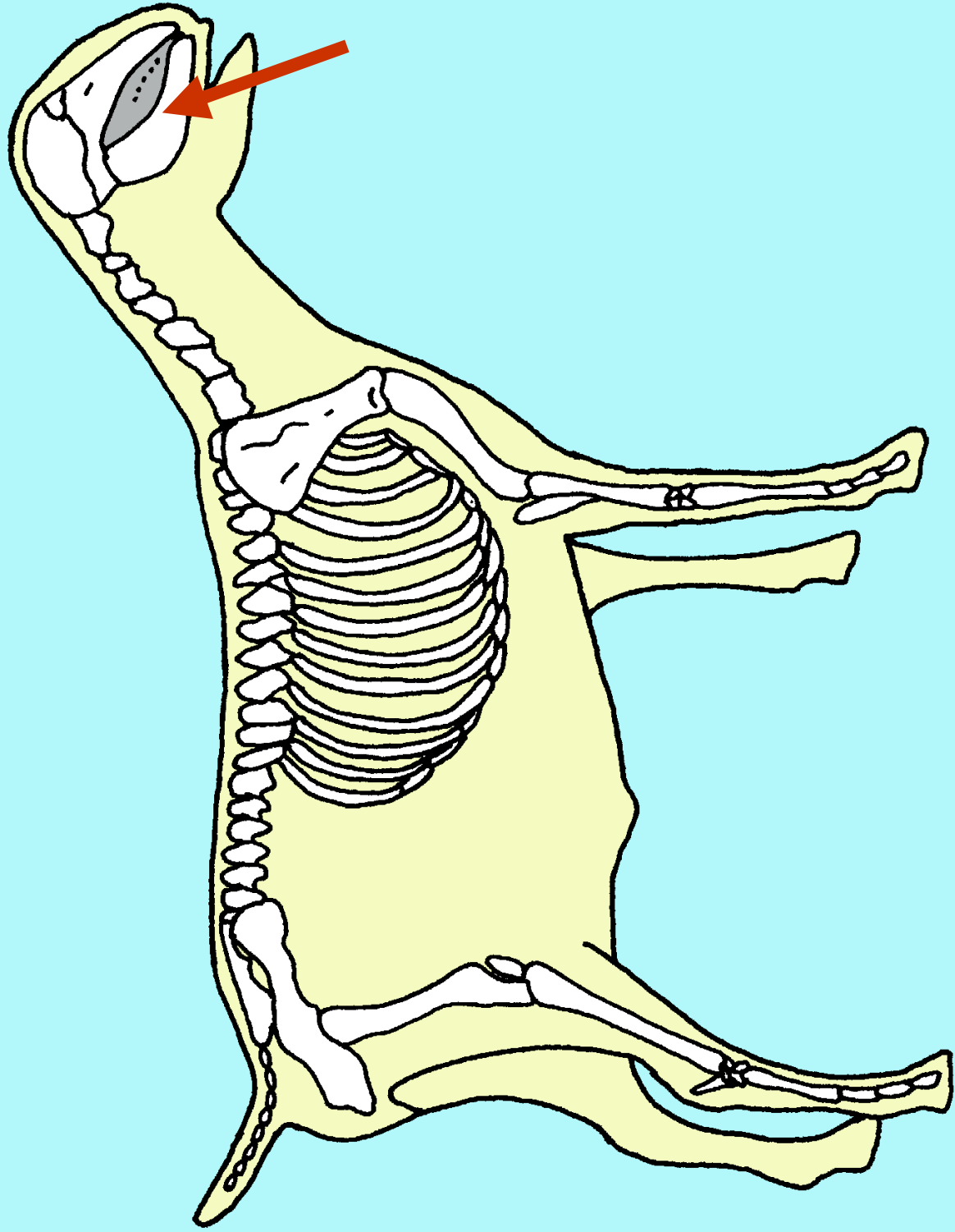
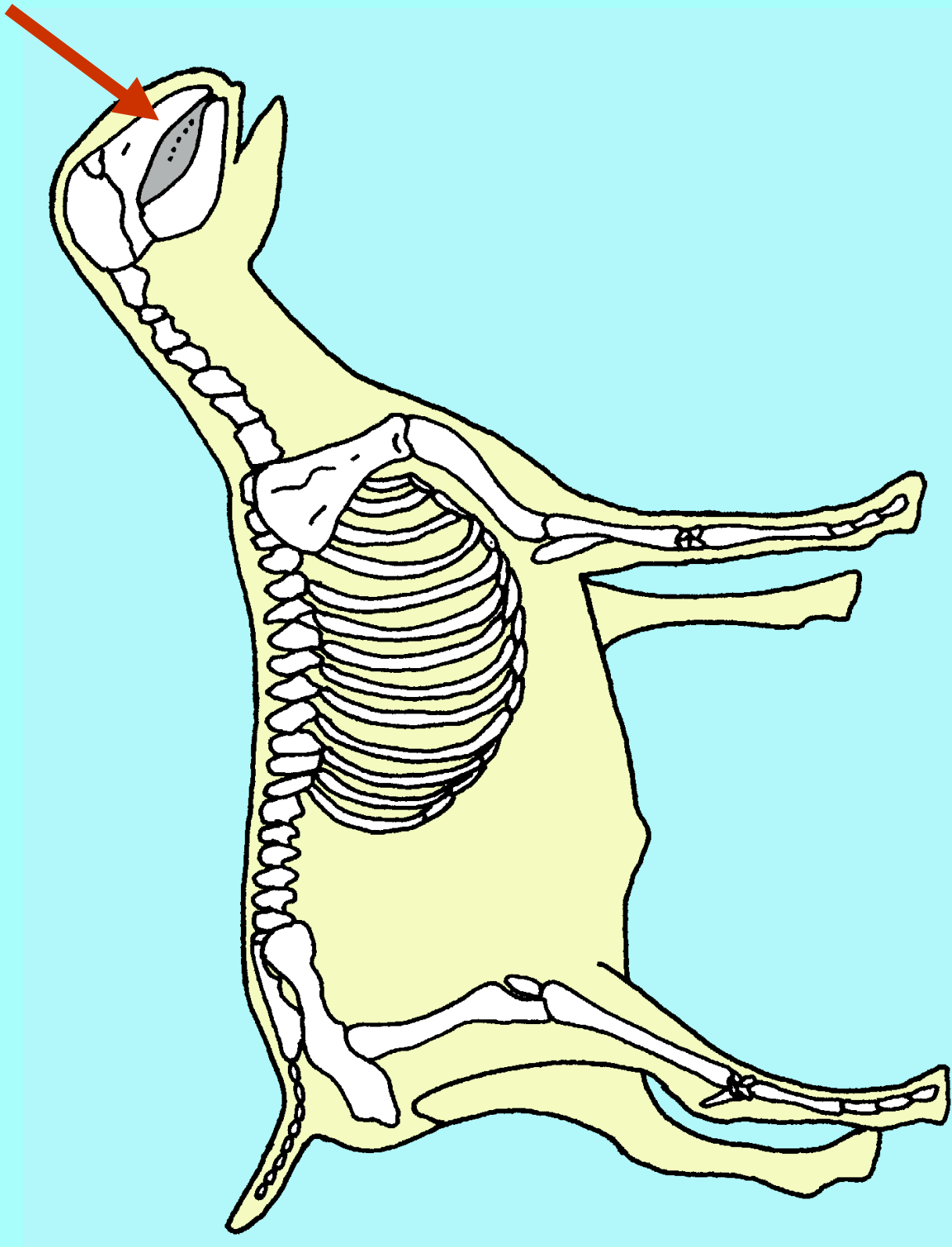


Skeletal Anatomy of Goats

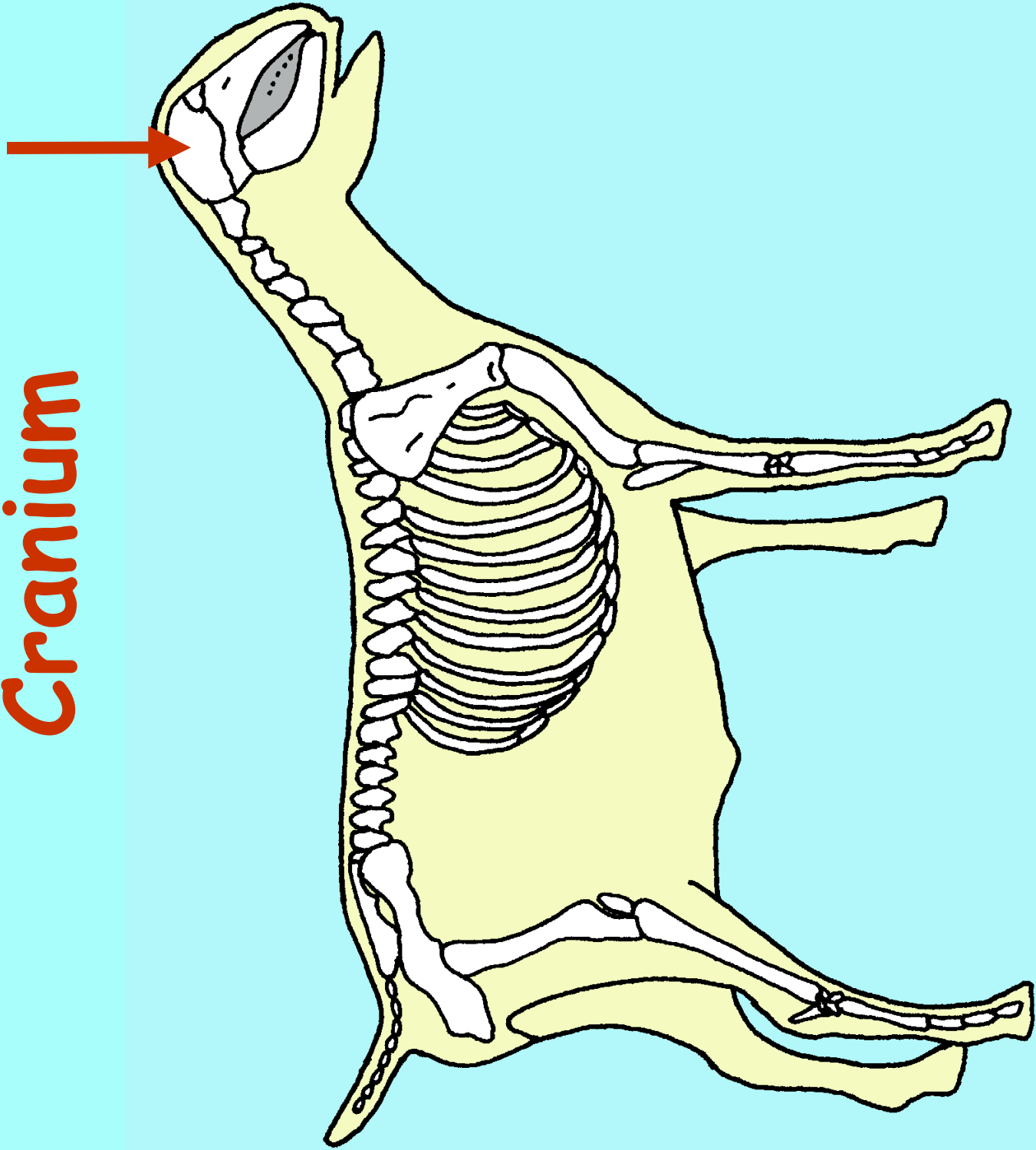
Mandible



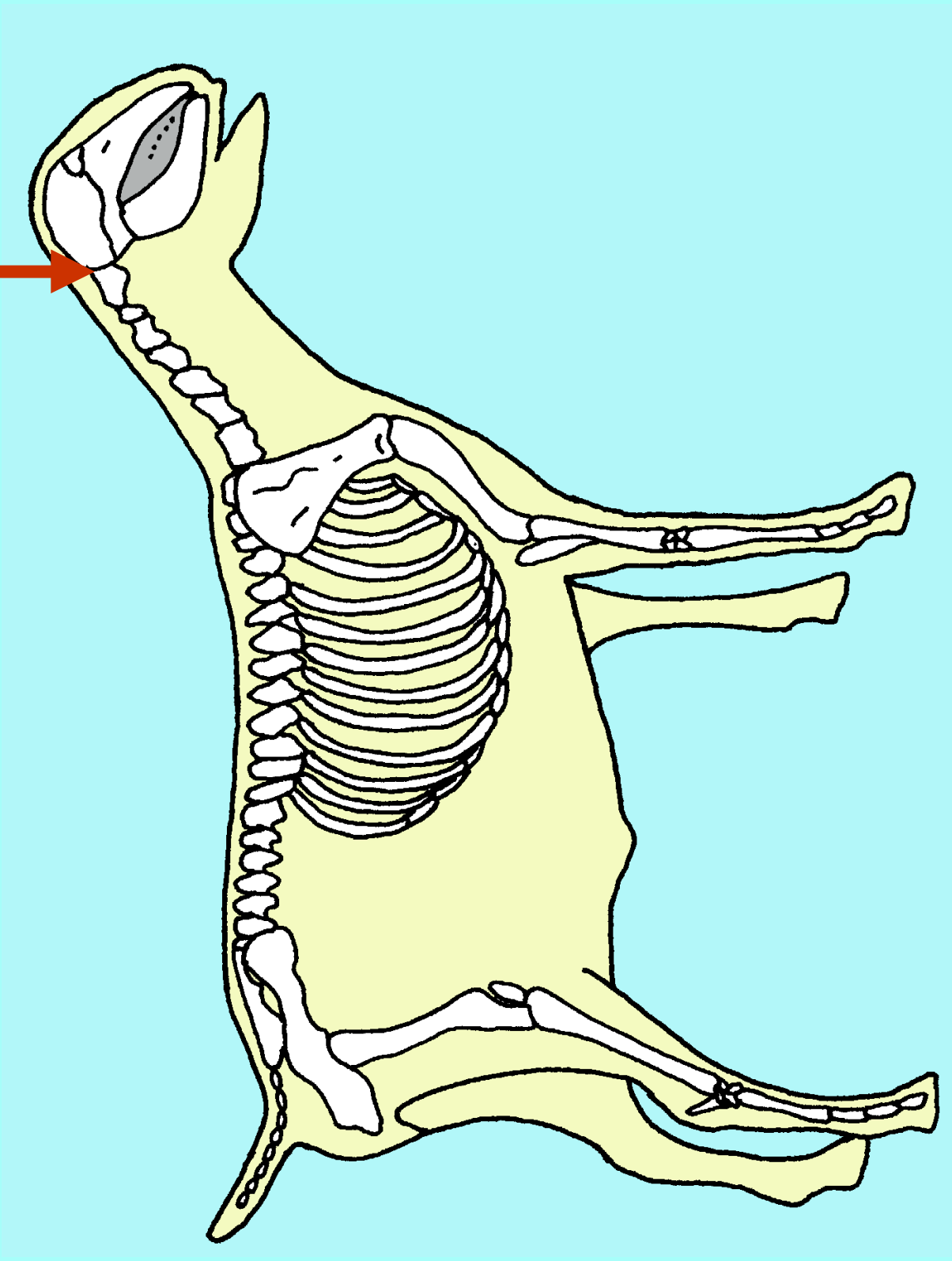
Maxilla



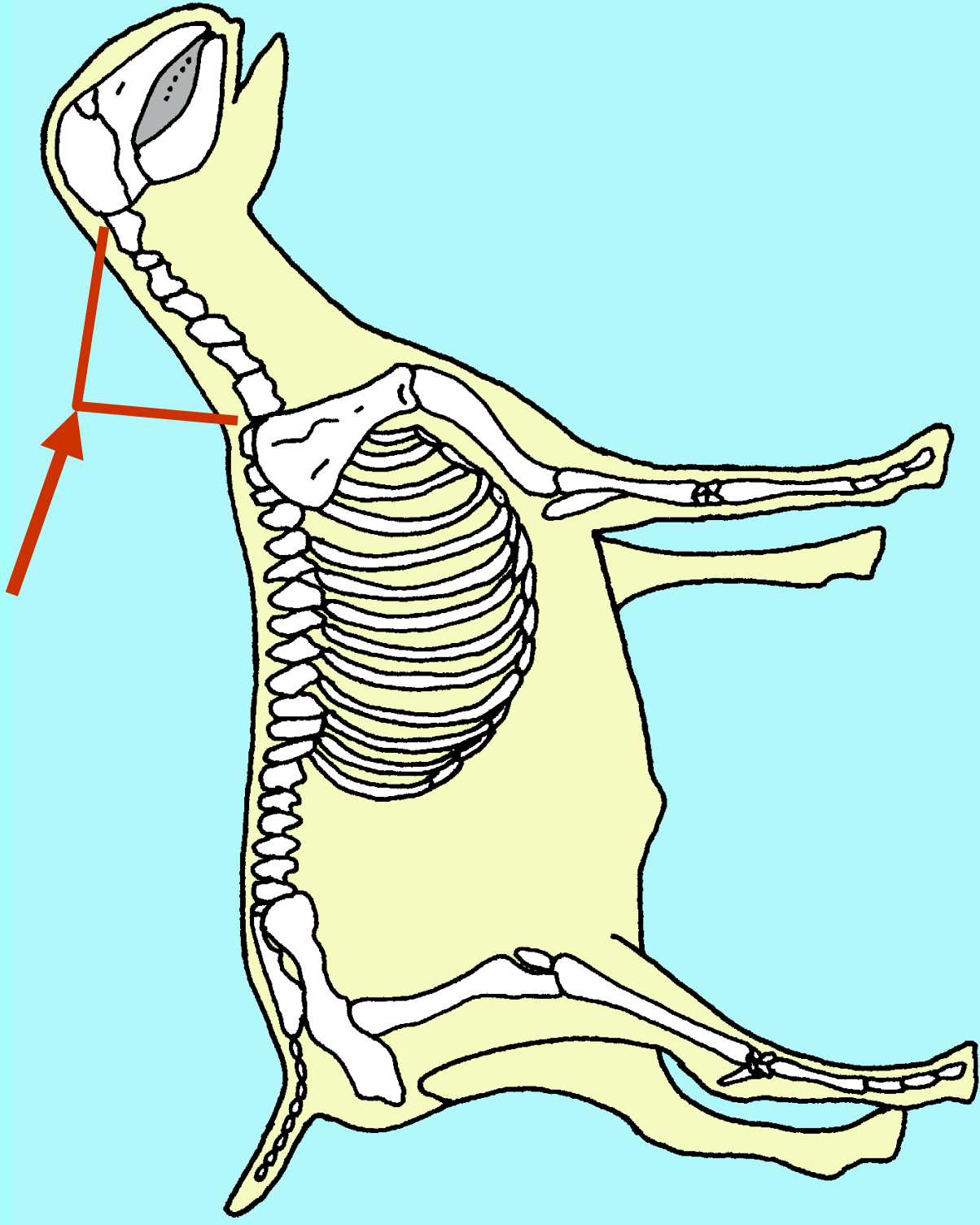
Cranium



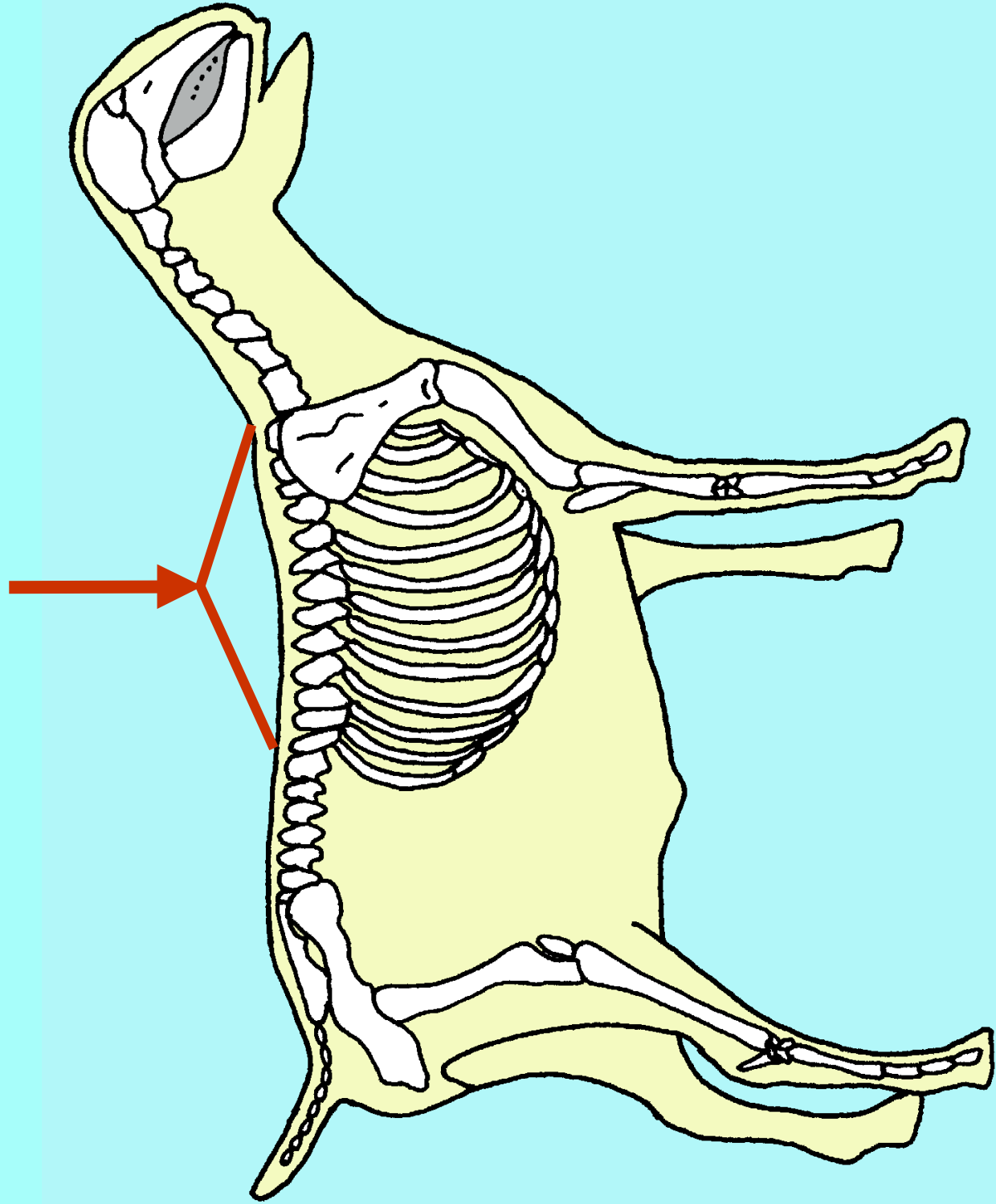
Atlas Joint



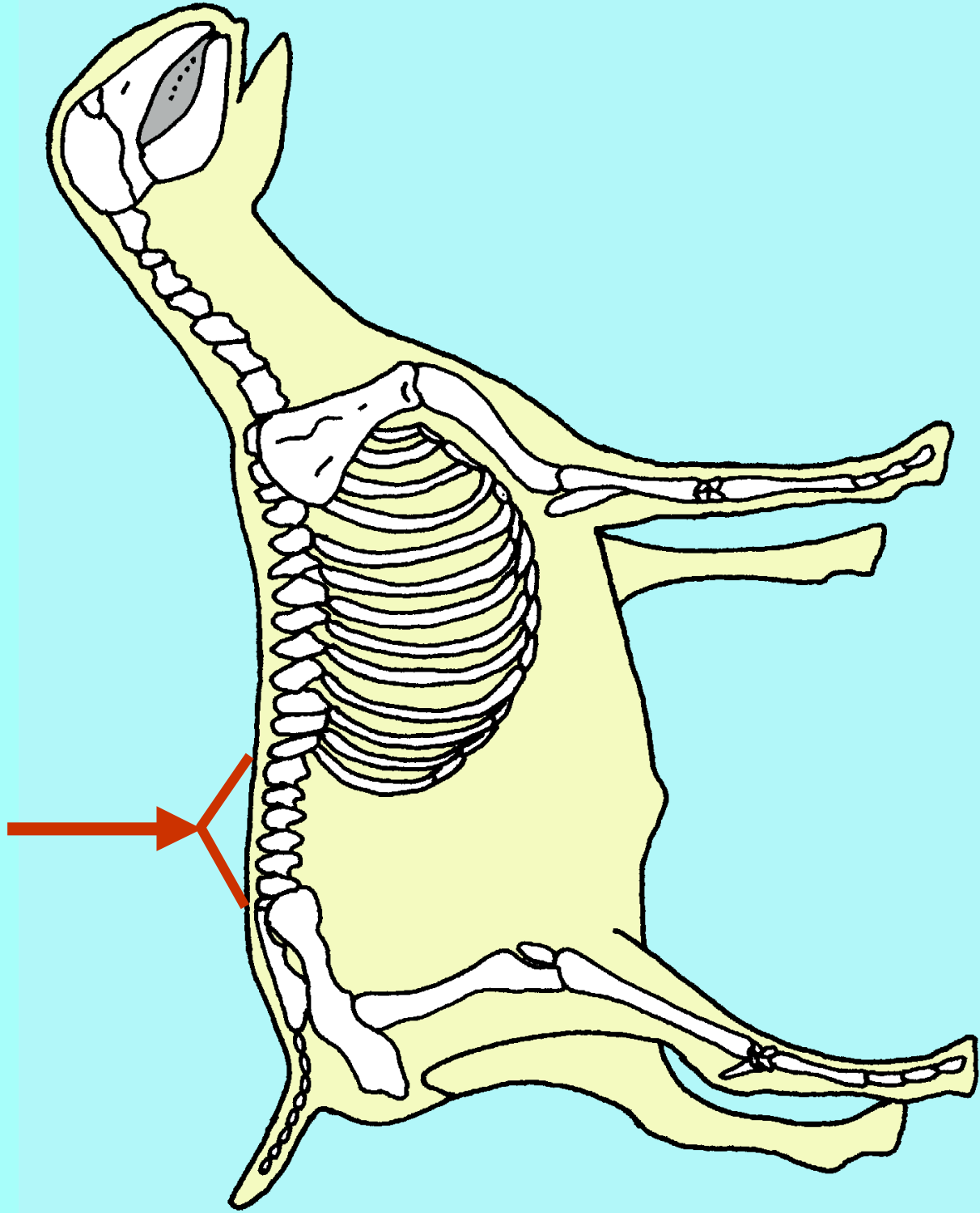
Cervical Vertebrae



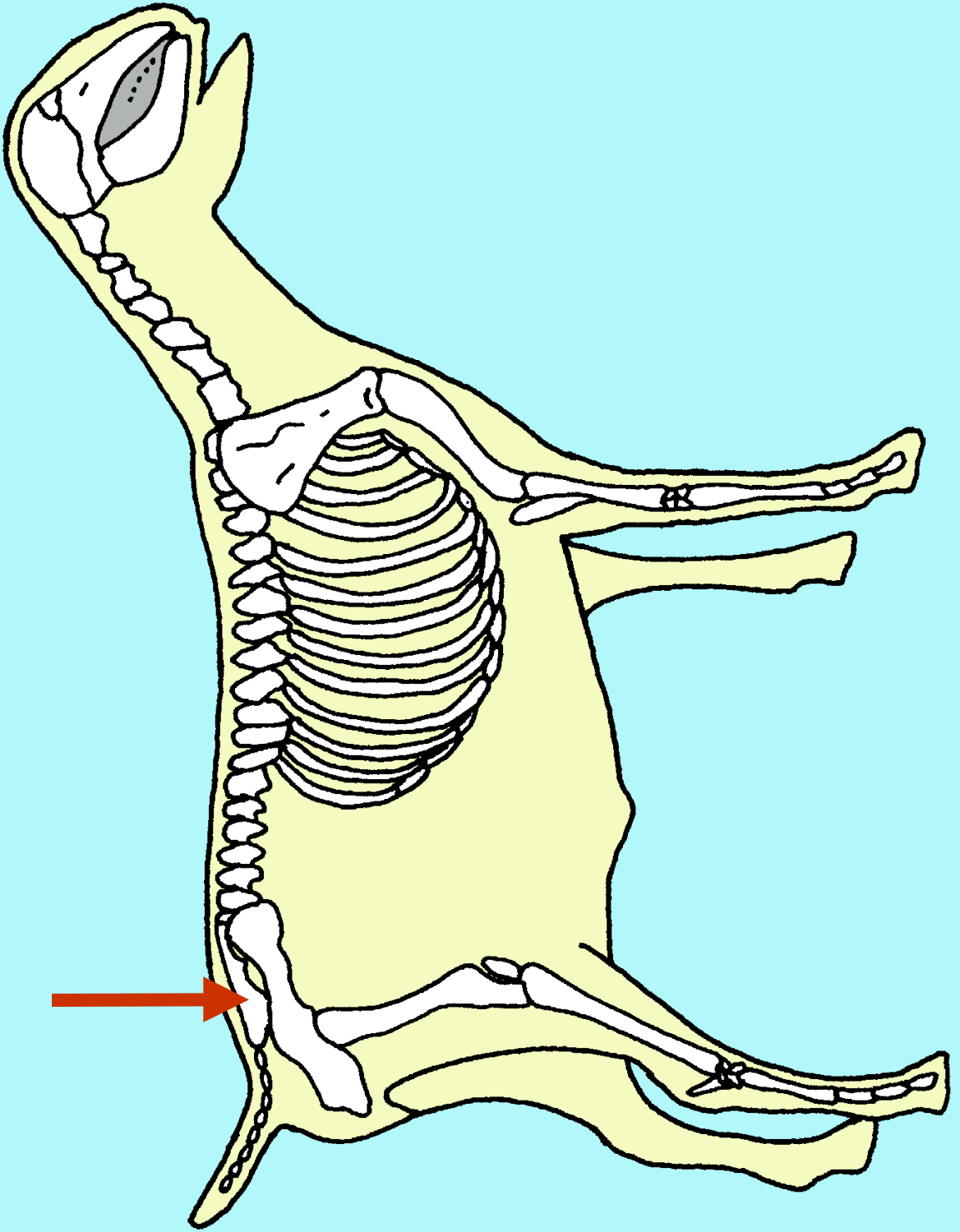
Thoracic Vertebrae



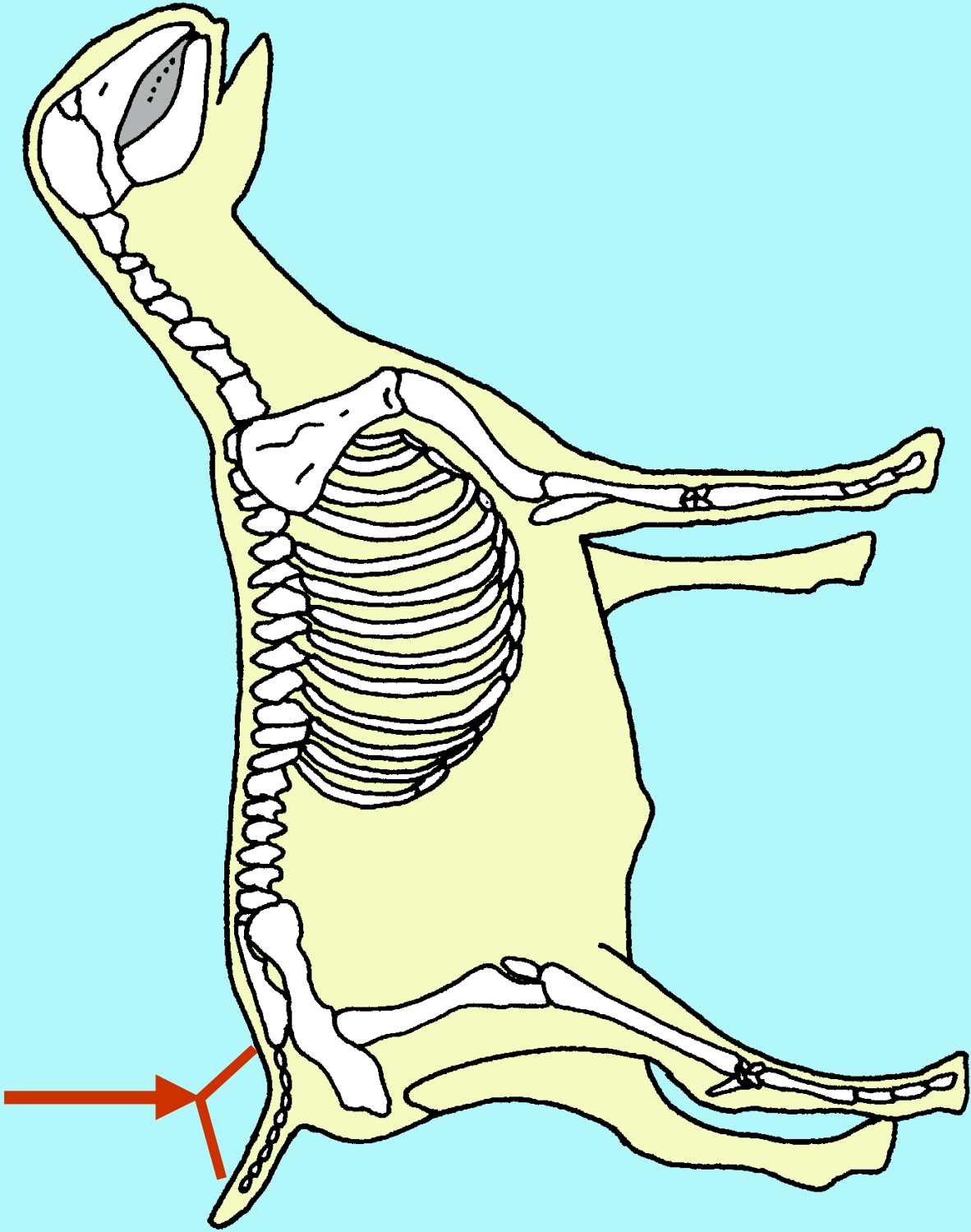
Lumbar Vertebrae



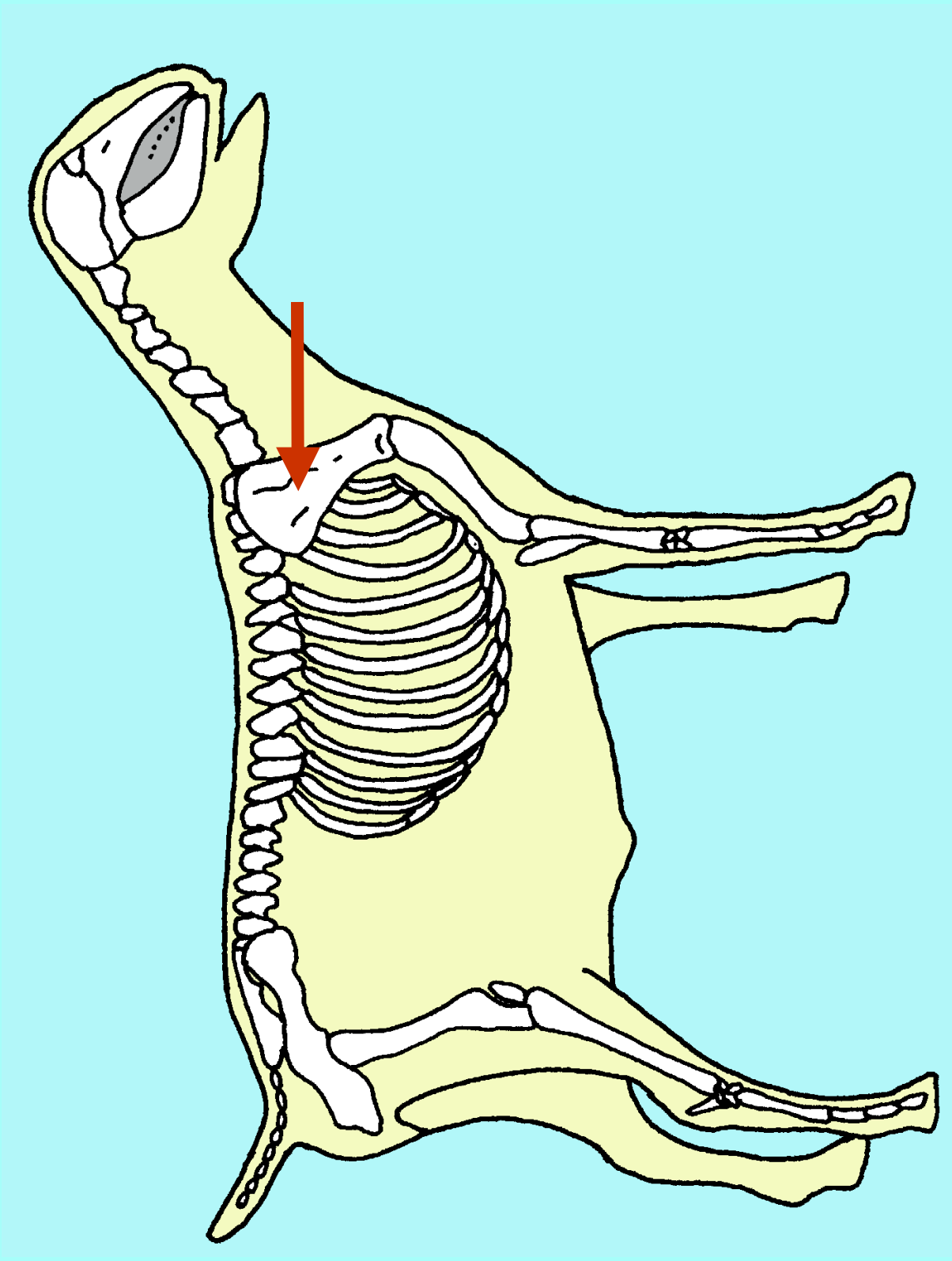
Sacrum



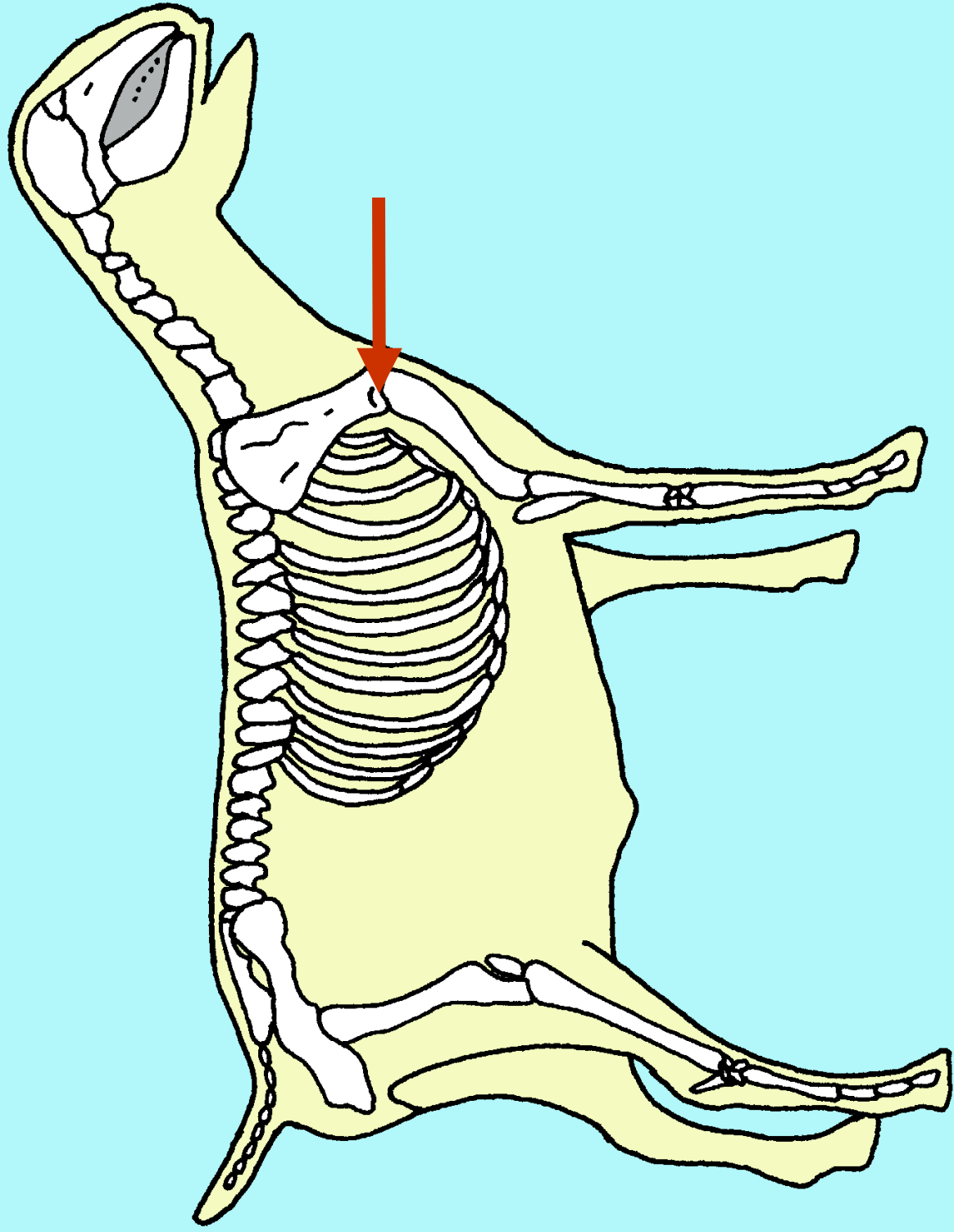
Coccygeal Vertebrae



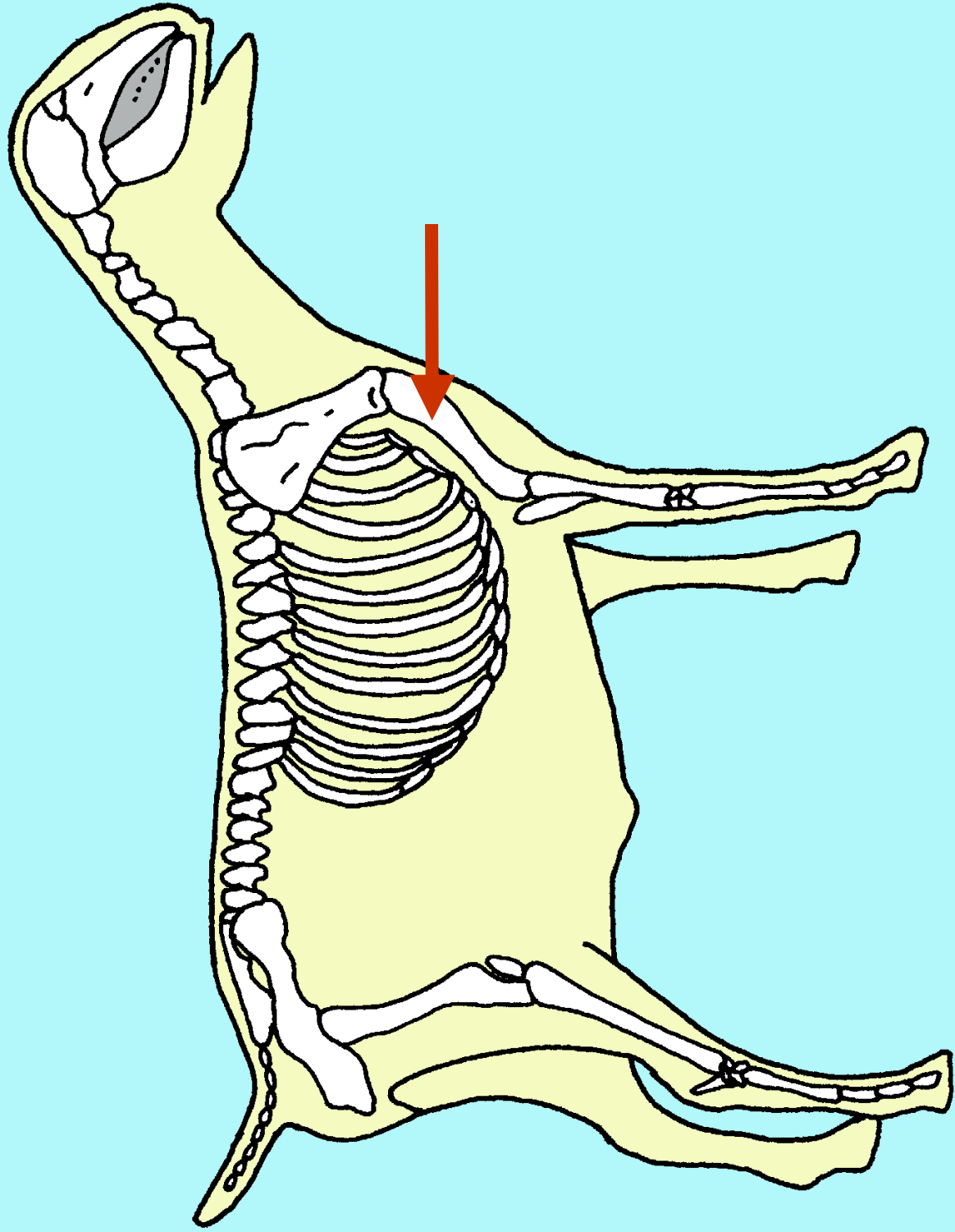
Scapula



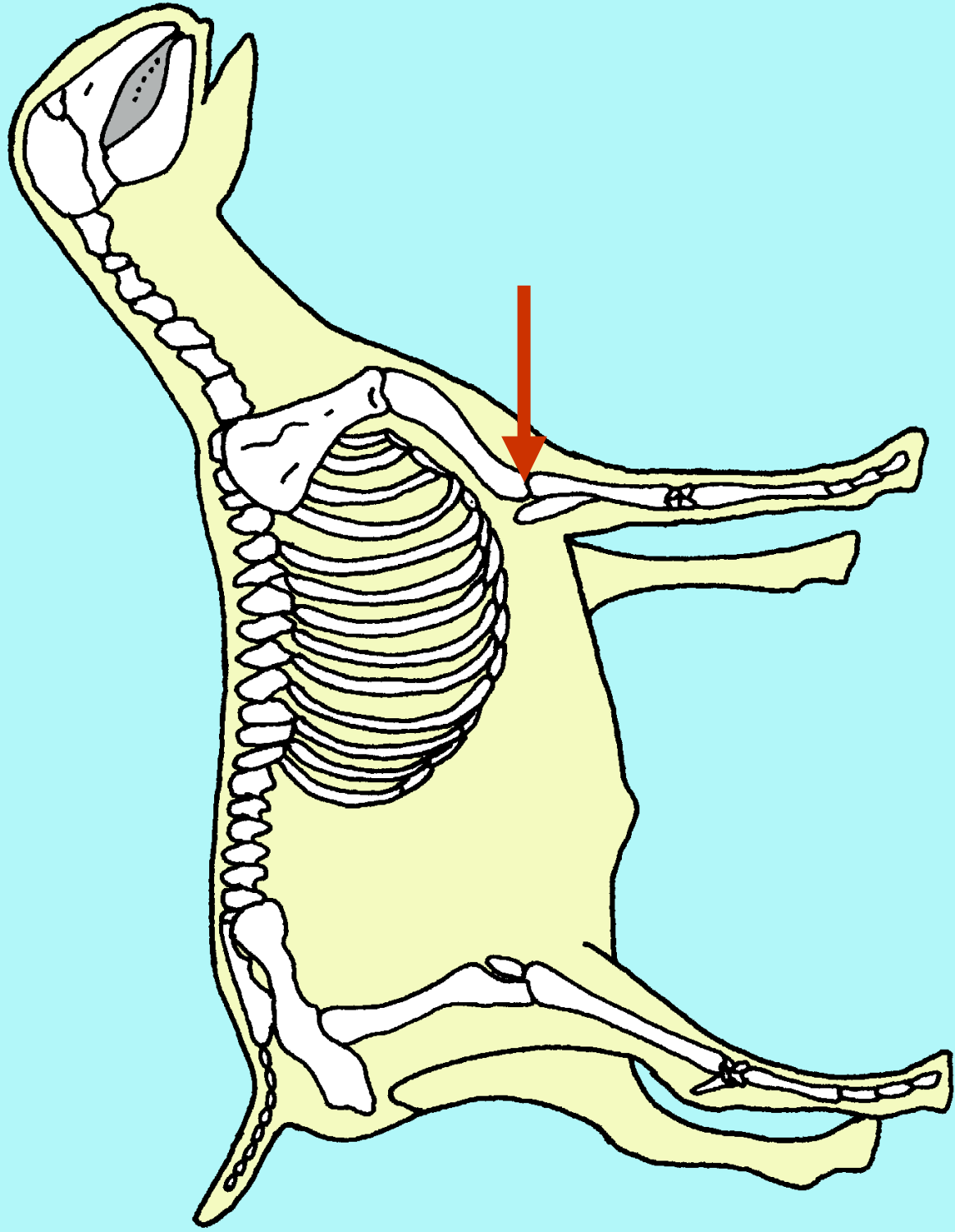
Shoulder Joint



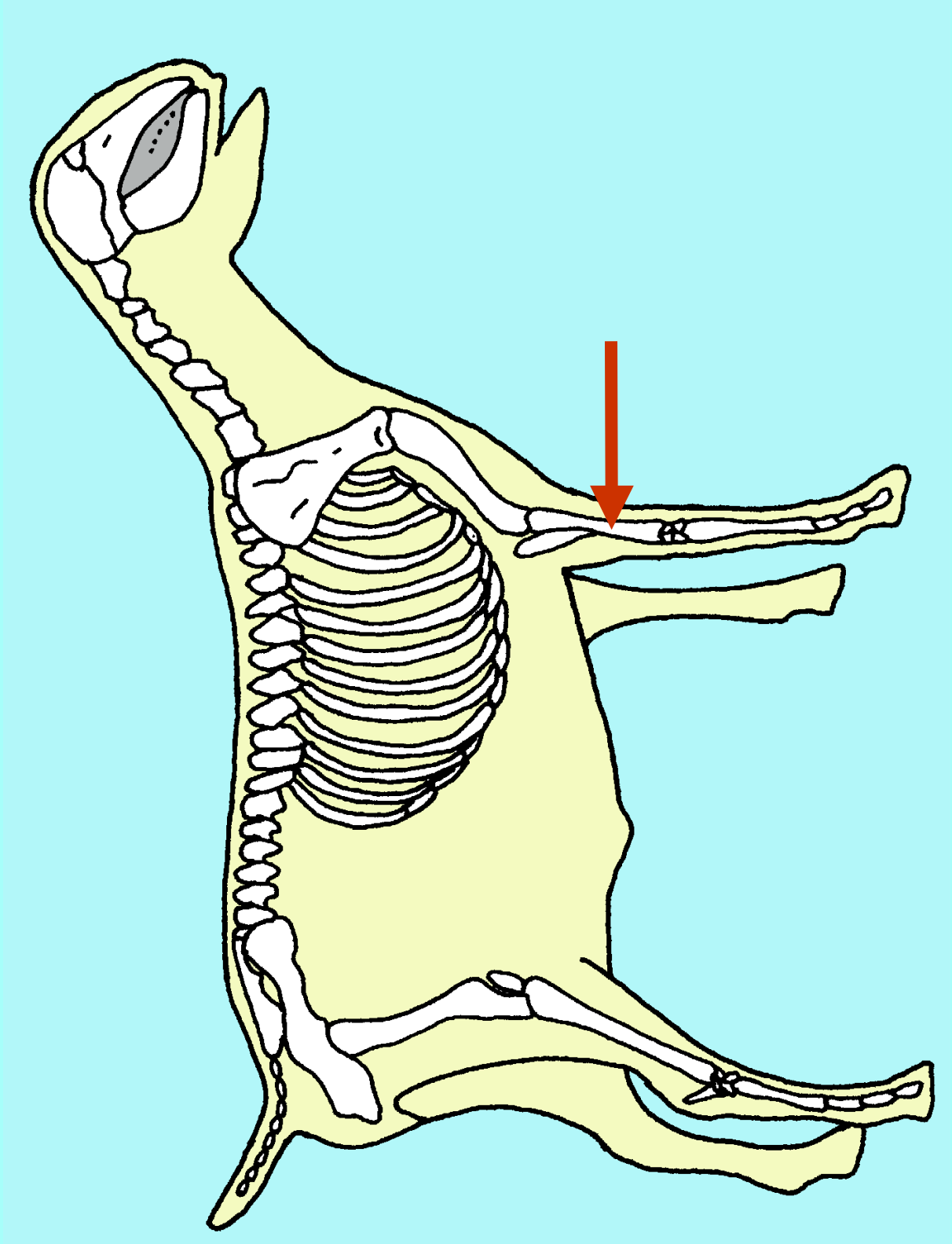
Humerus



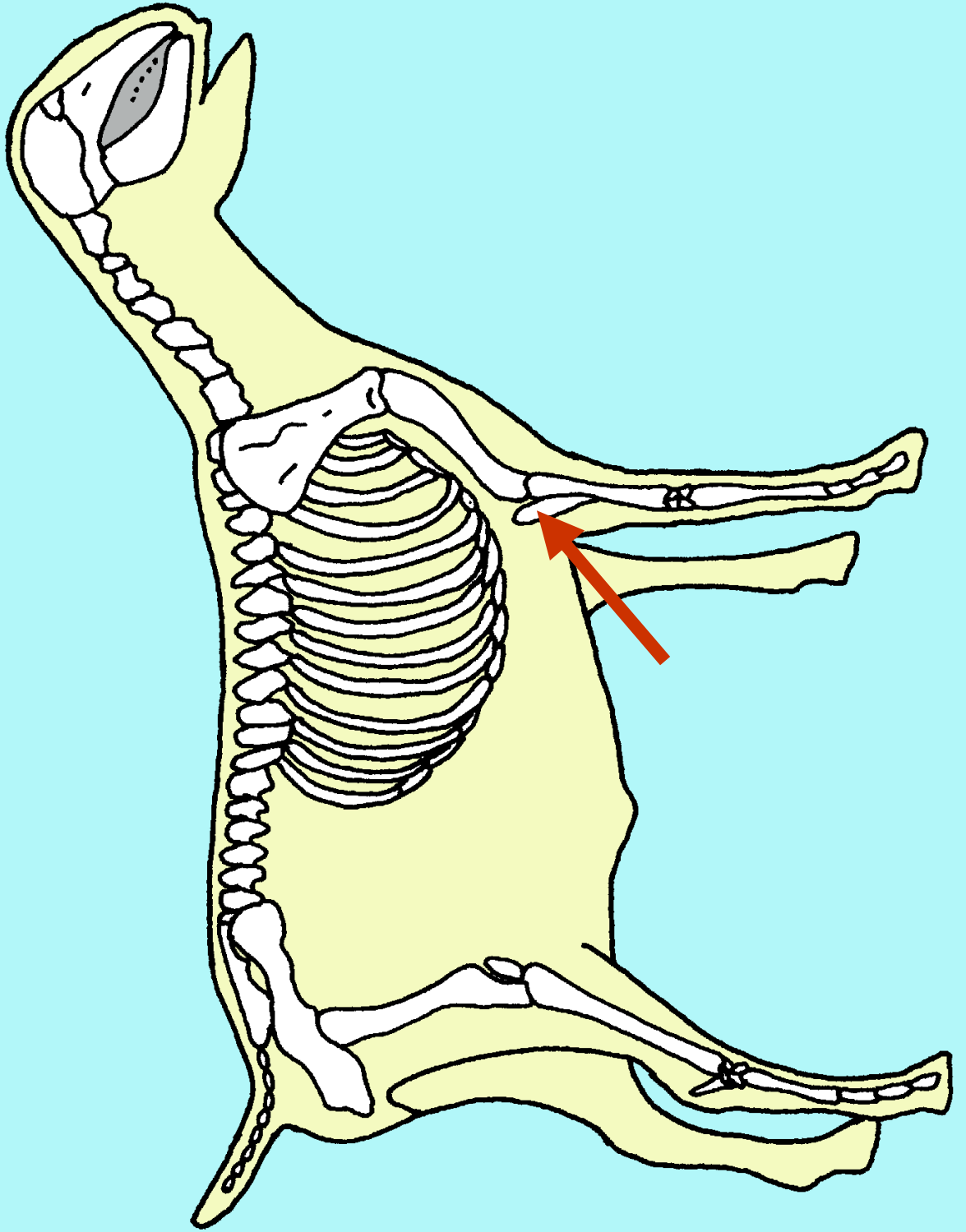
Elbow Joint



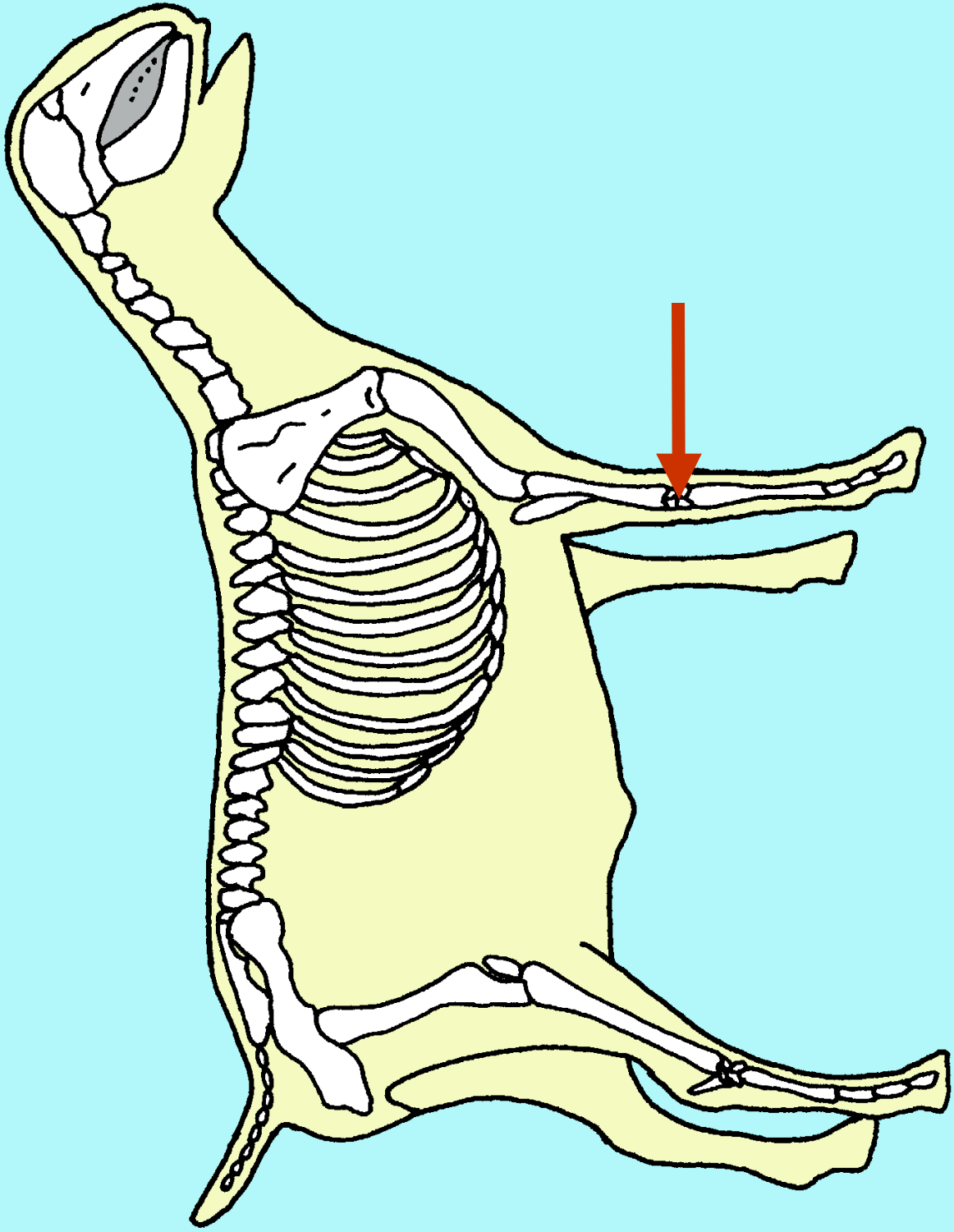
Radius



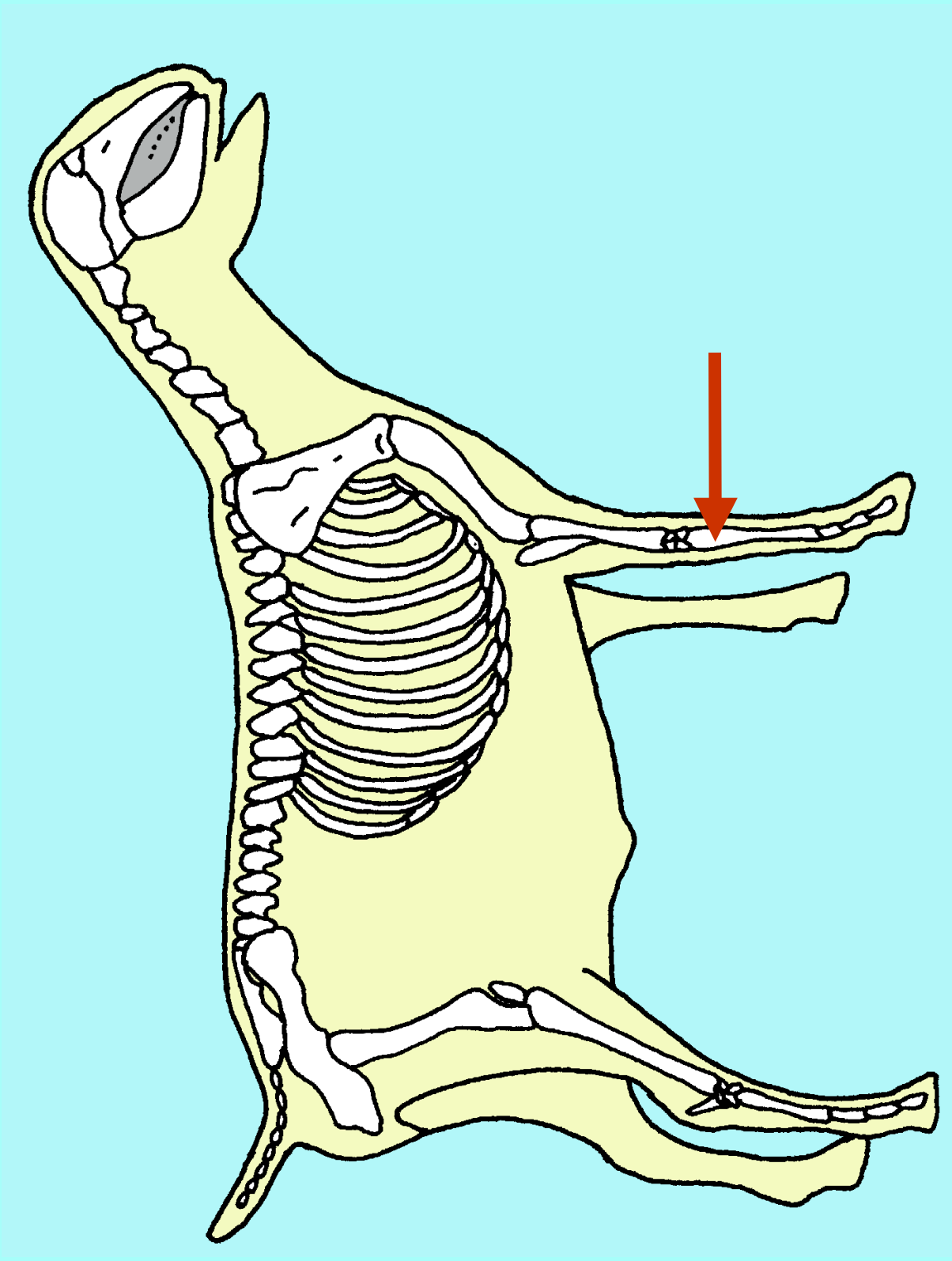
Ulna



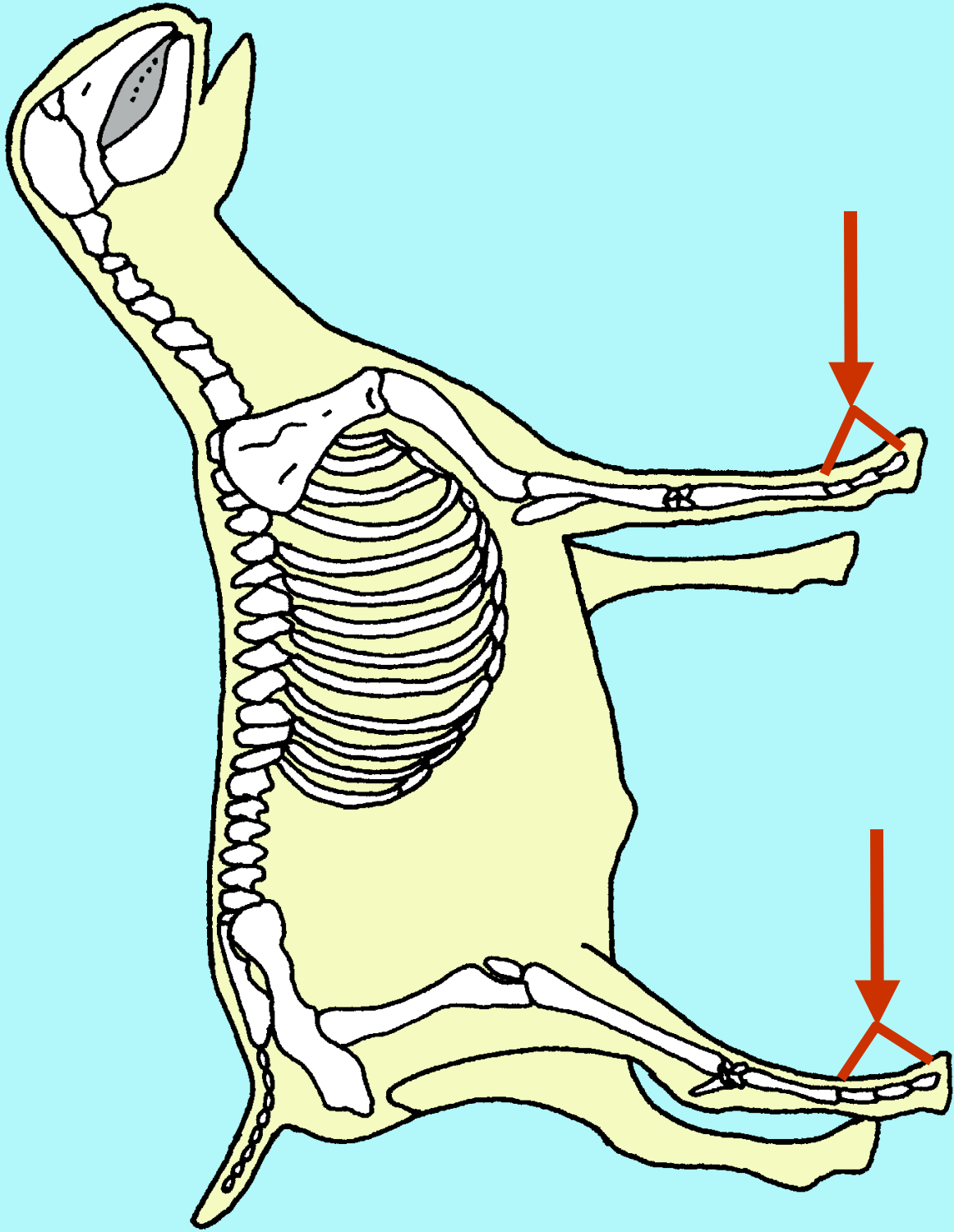
Carpal Bones



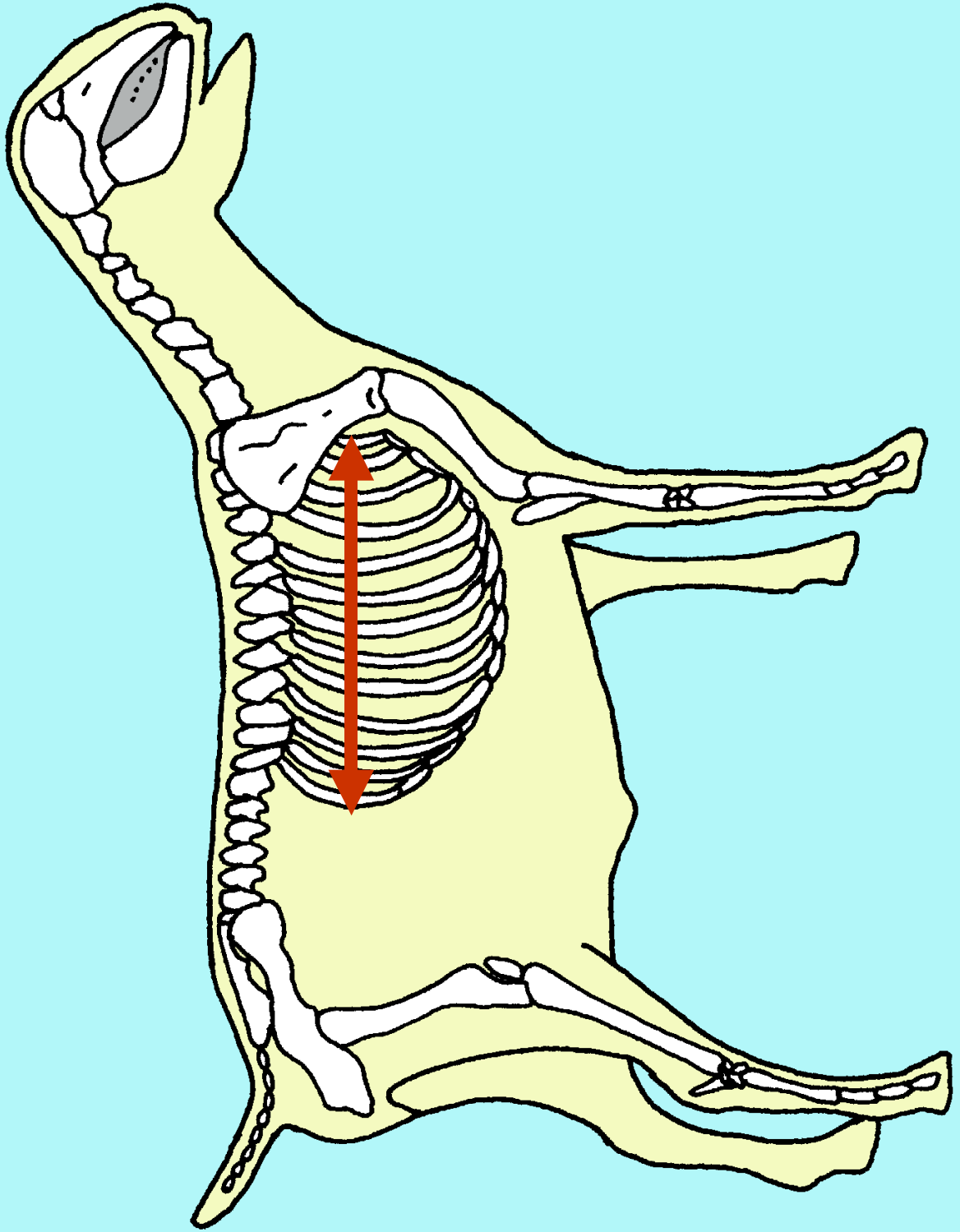
Metacarpals



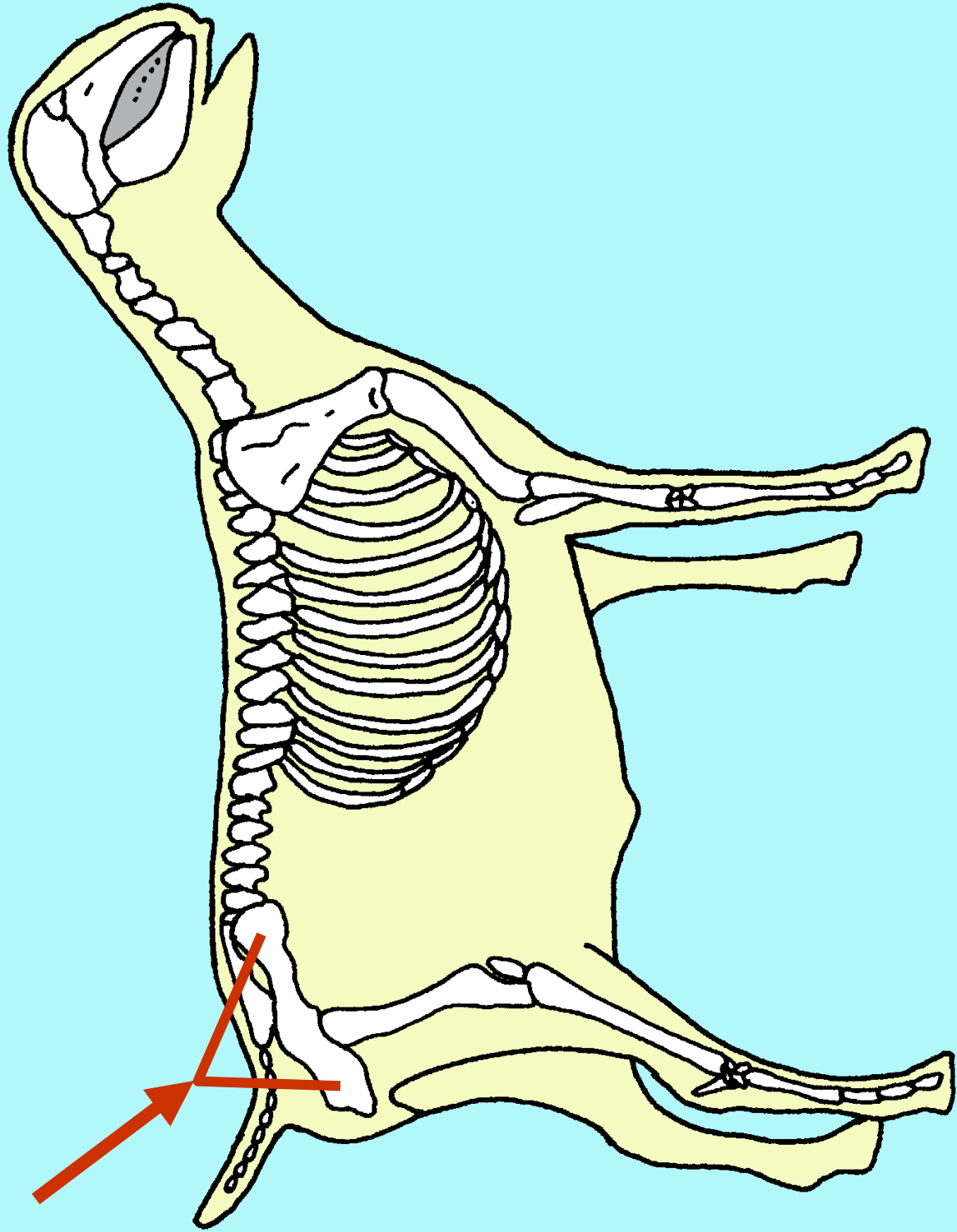
Phalanges



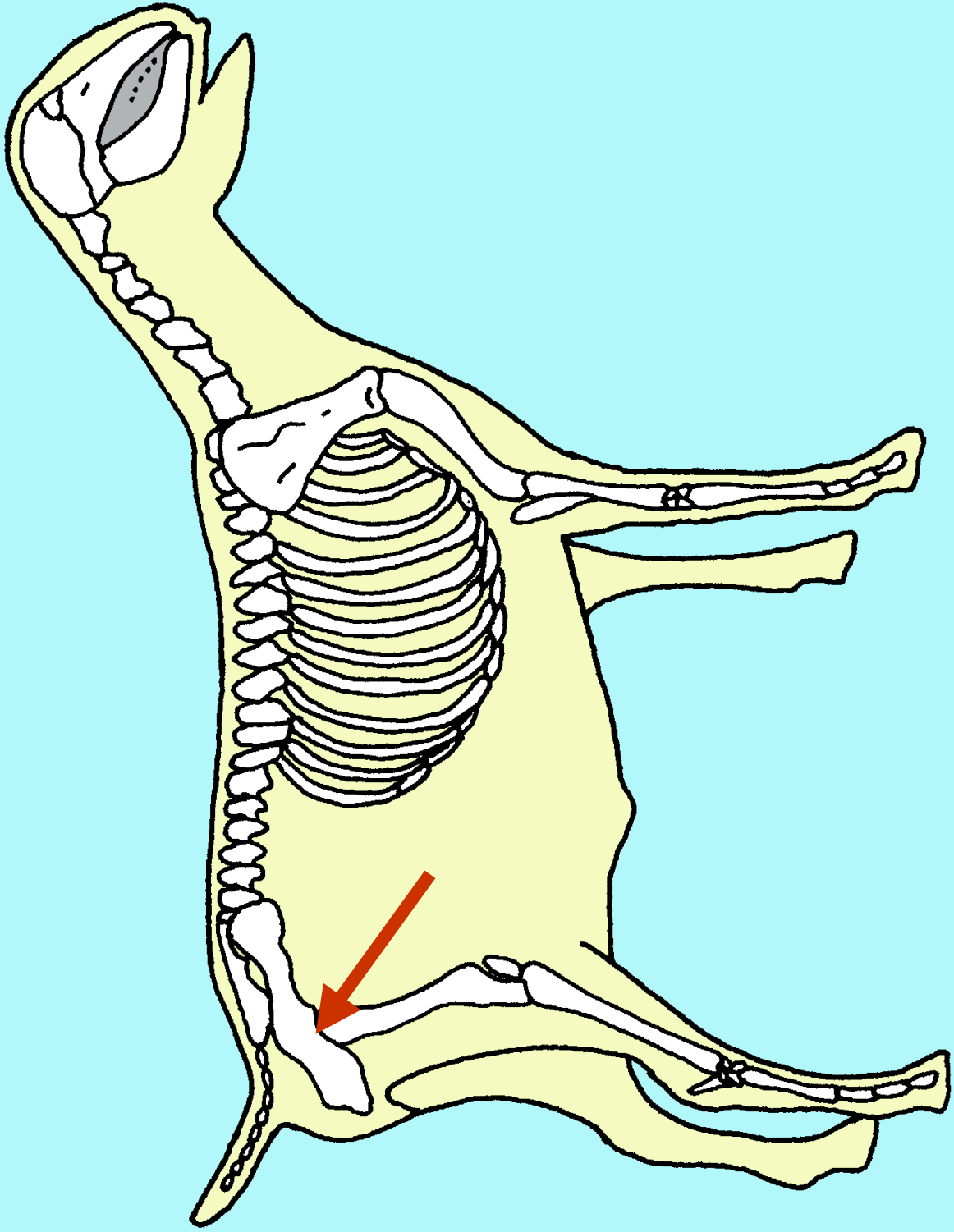
Ribs



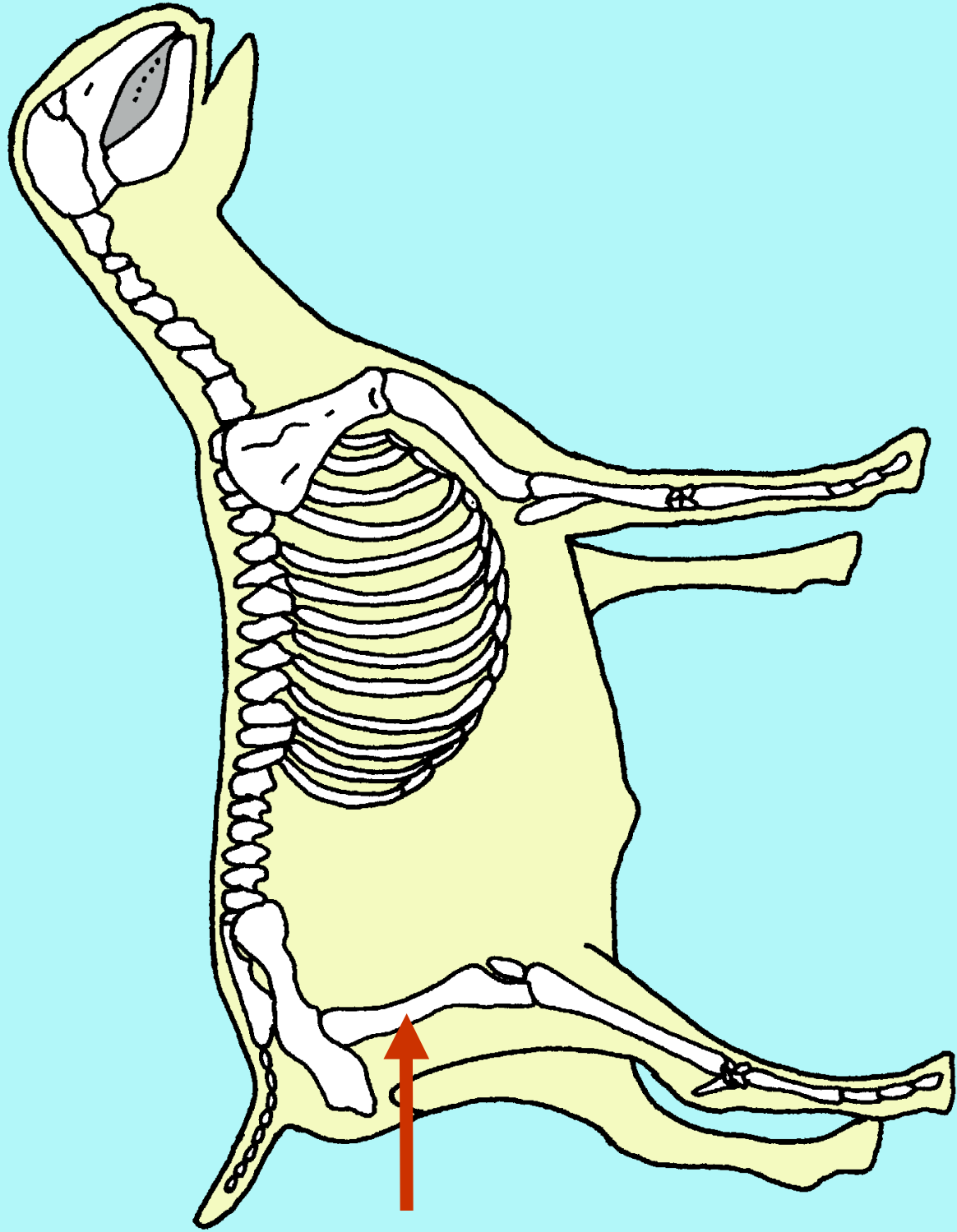
Os Coxae (Pelvis)



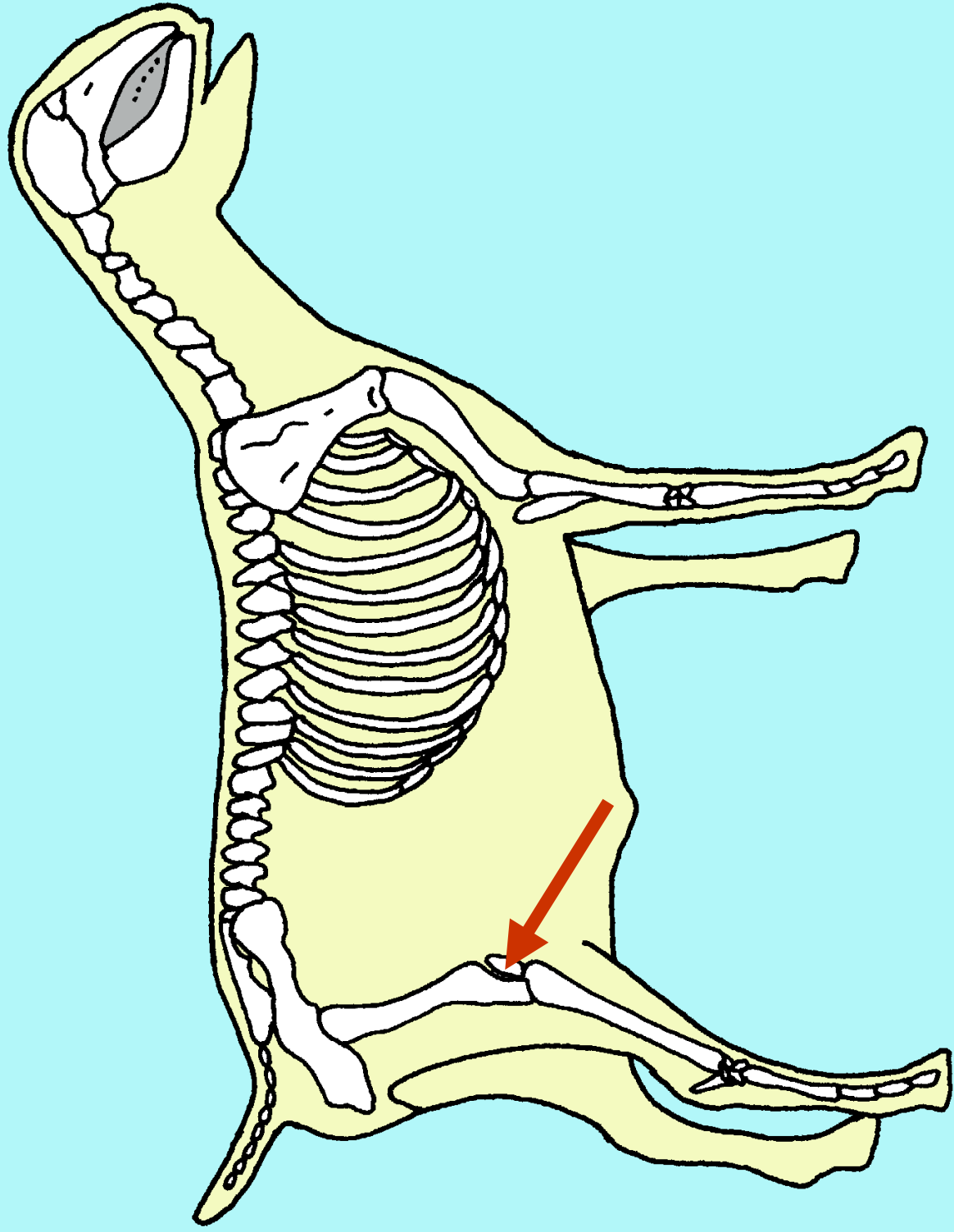
Hip Joint



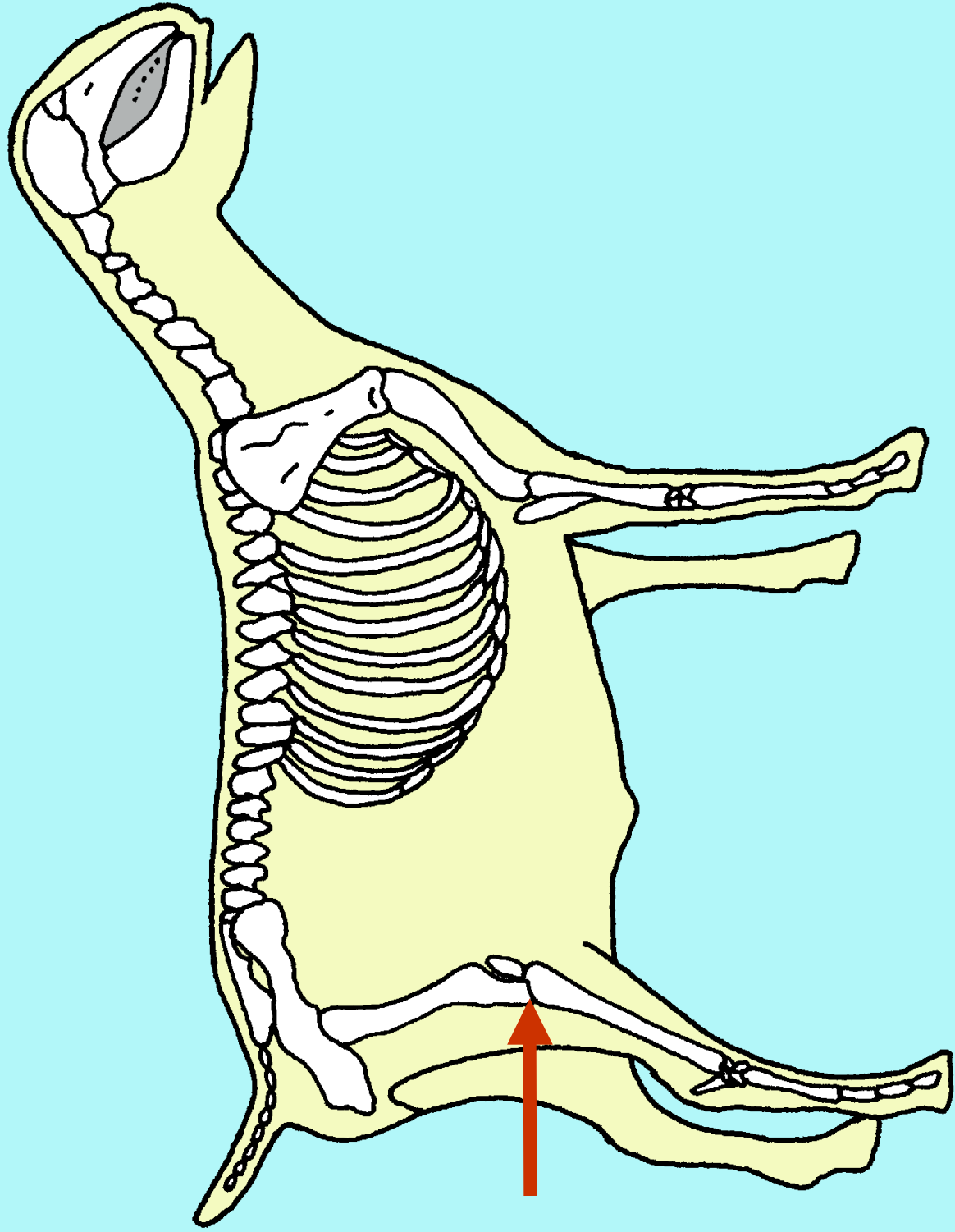
Femur



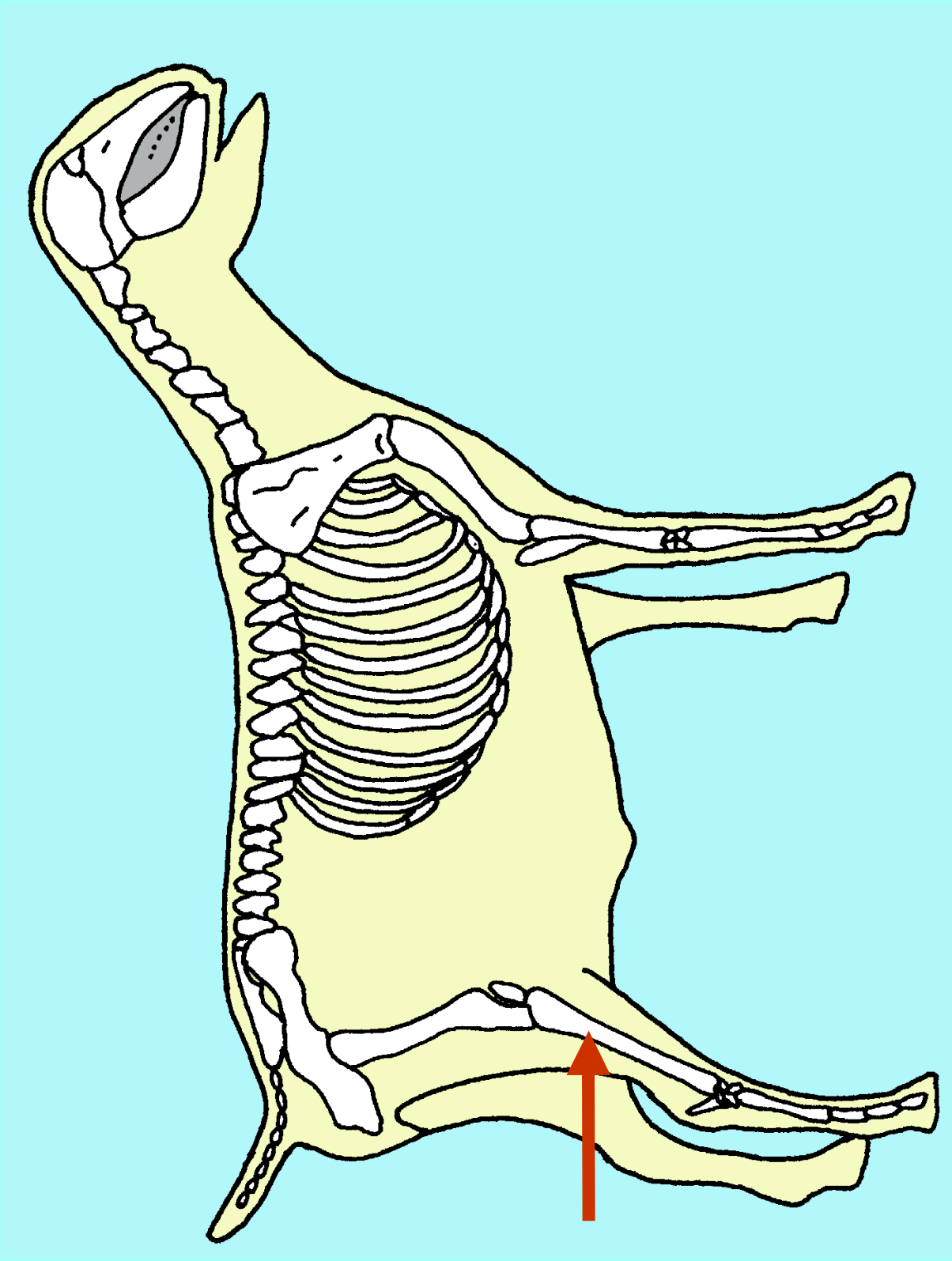
Patella



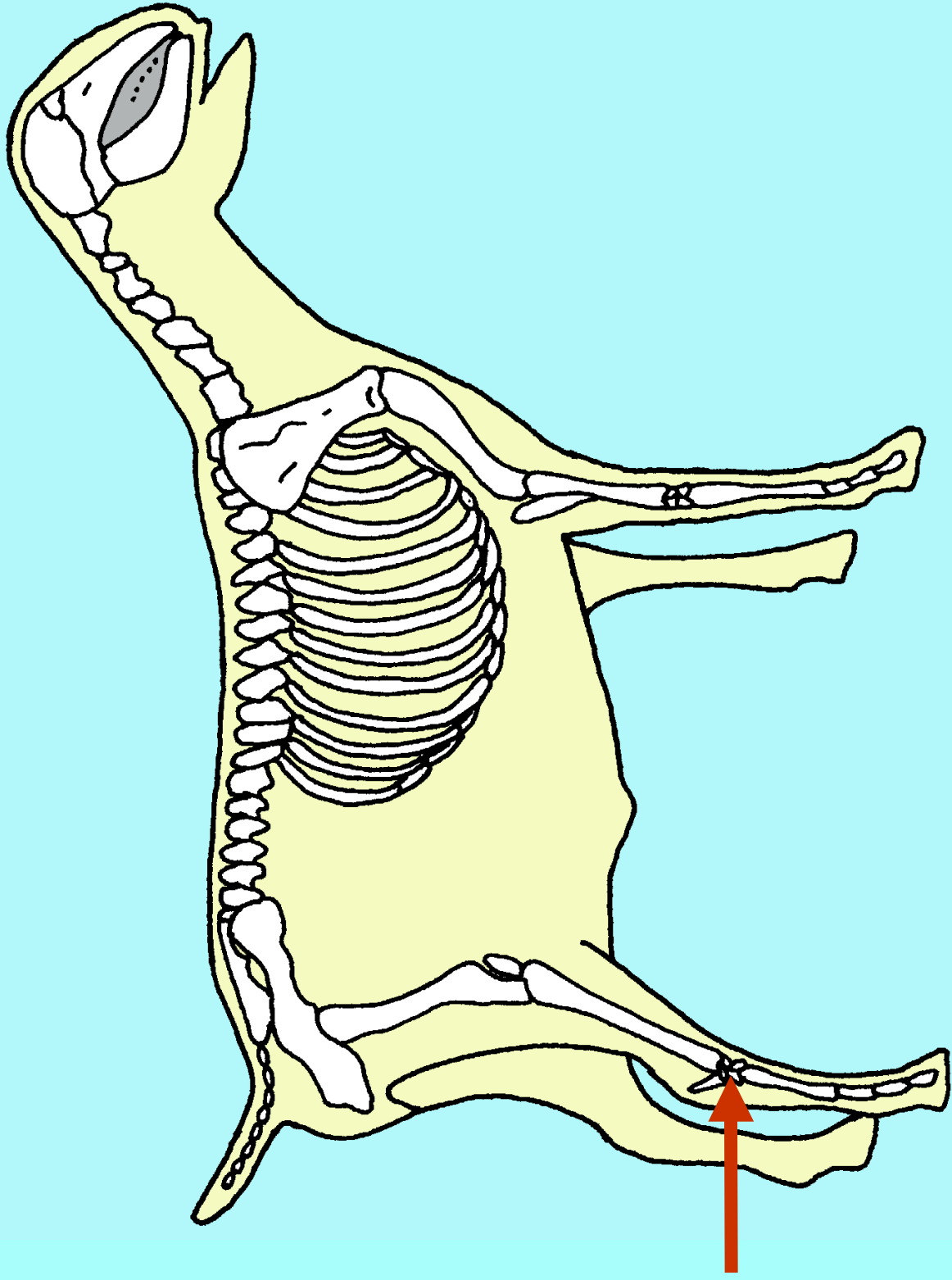
Stifle Joint



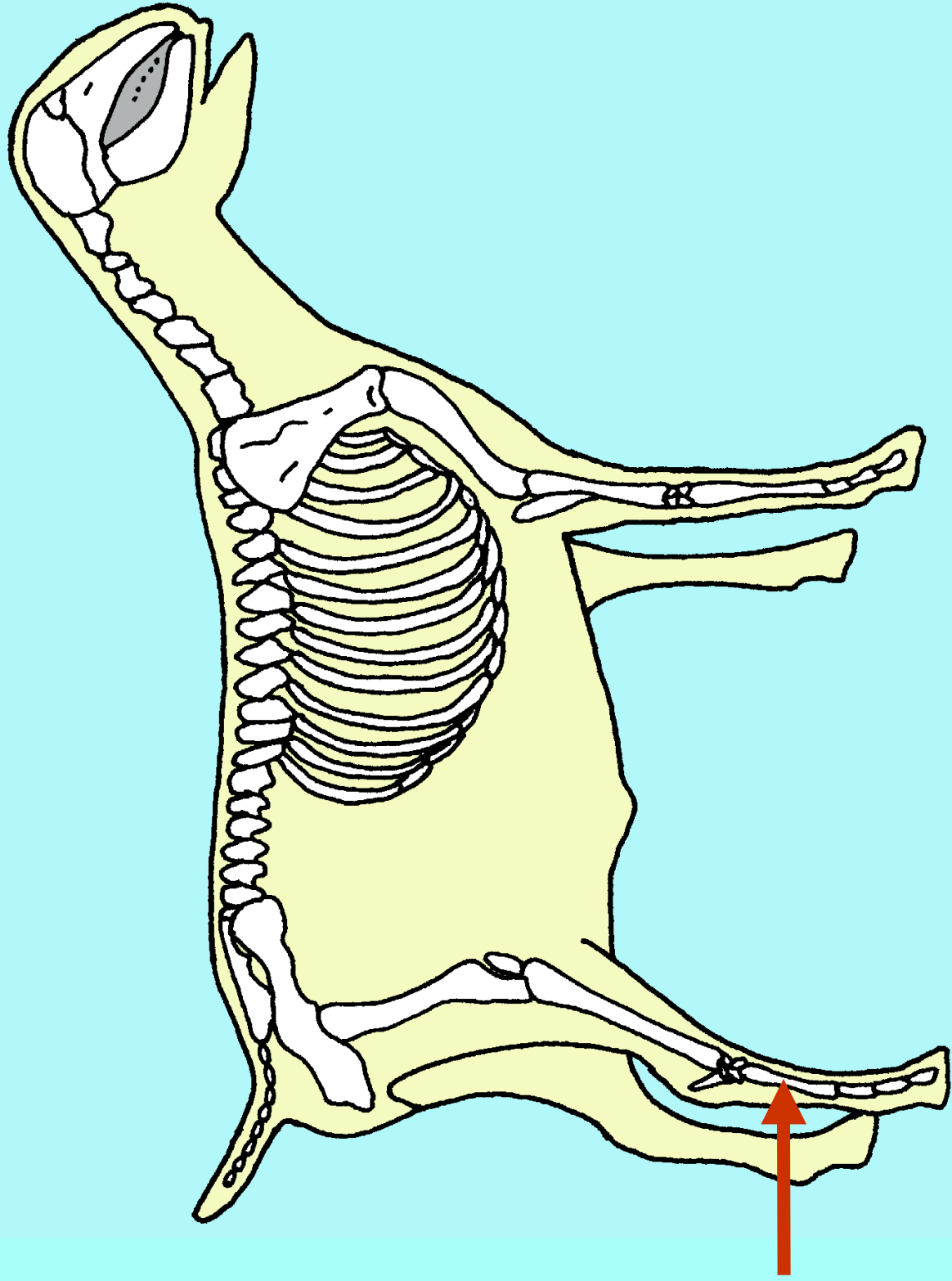
Tibia



Tarsal Bones



Metatarsals



Skeletal Anatomy of Goats

