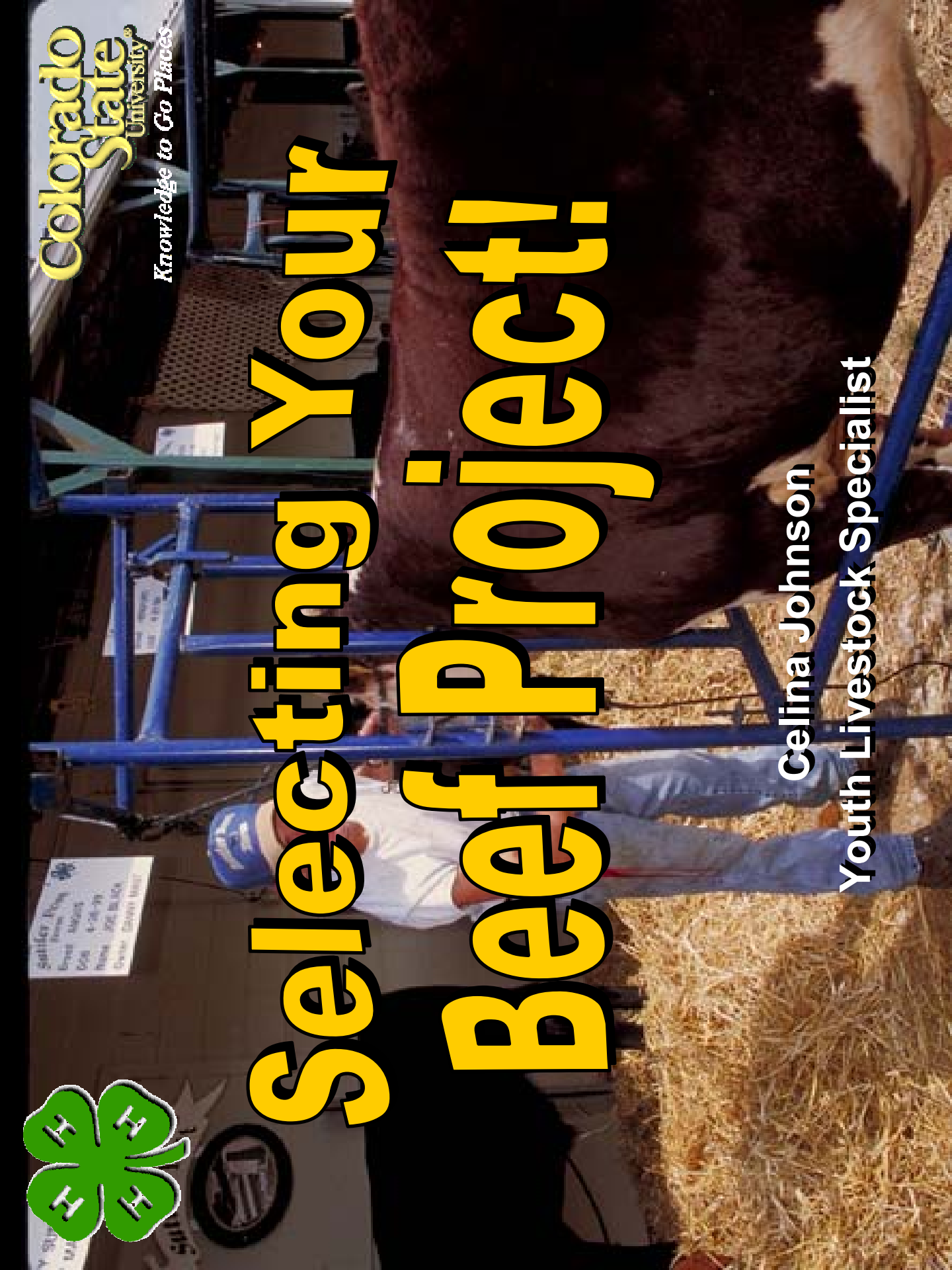




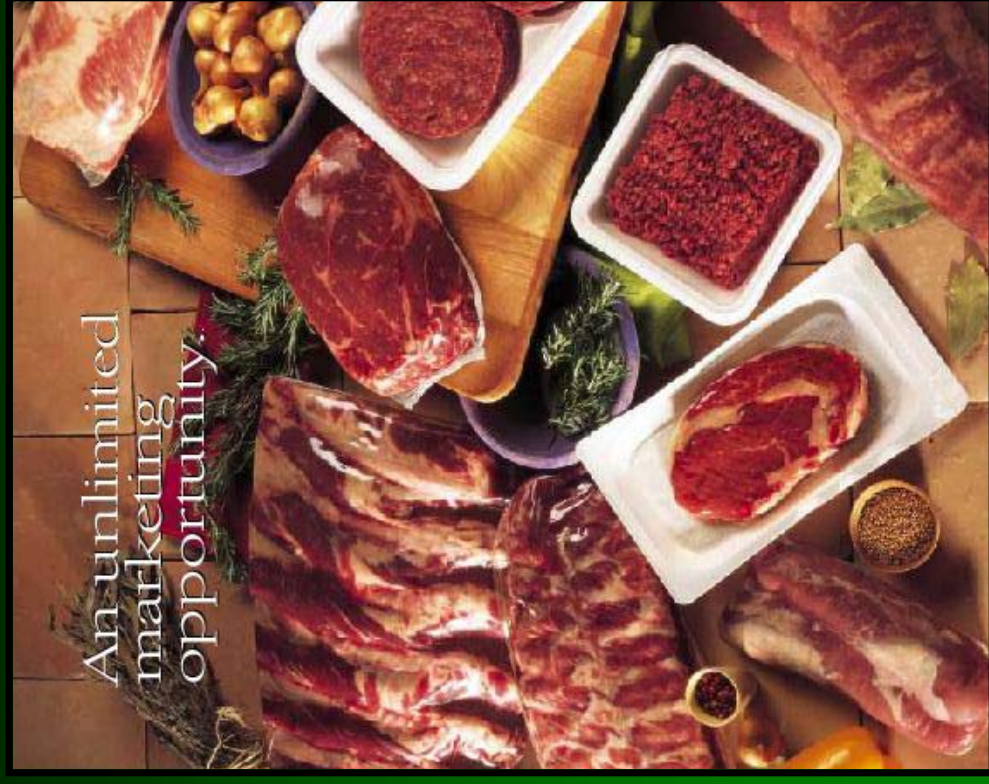
# Selecting Your Beef Project!

**Celina Johnson**  
Youth Livestock Specialist

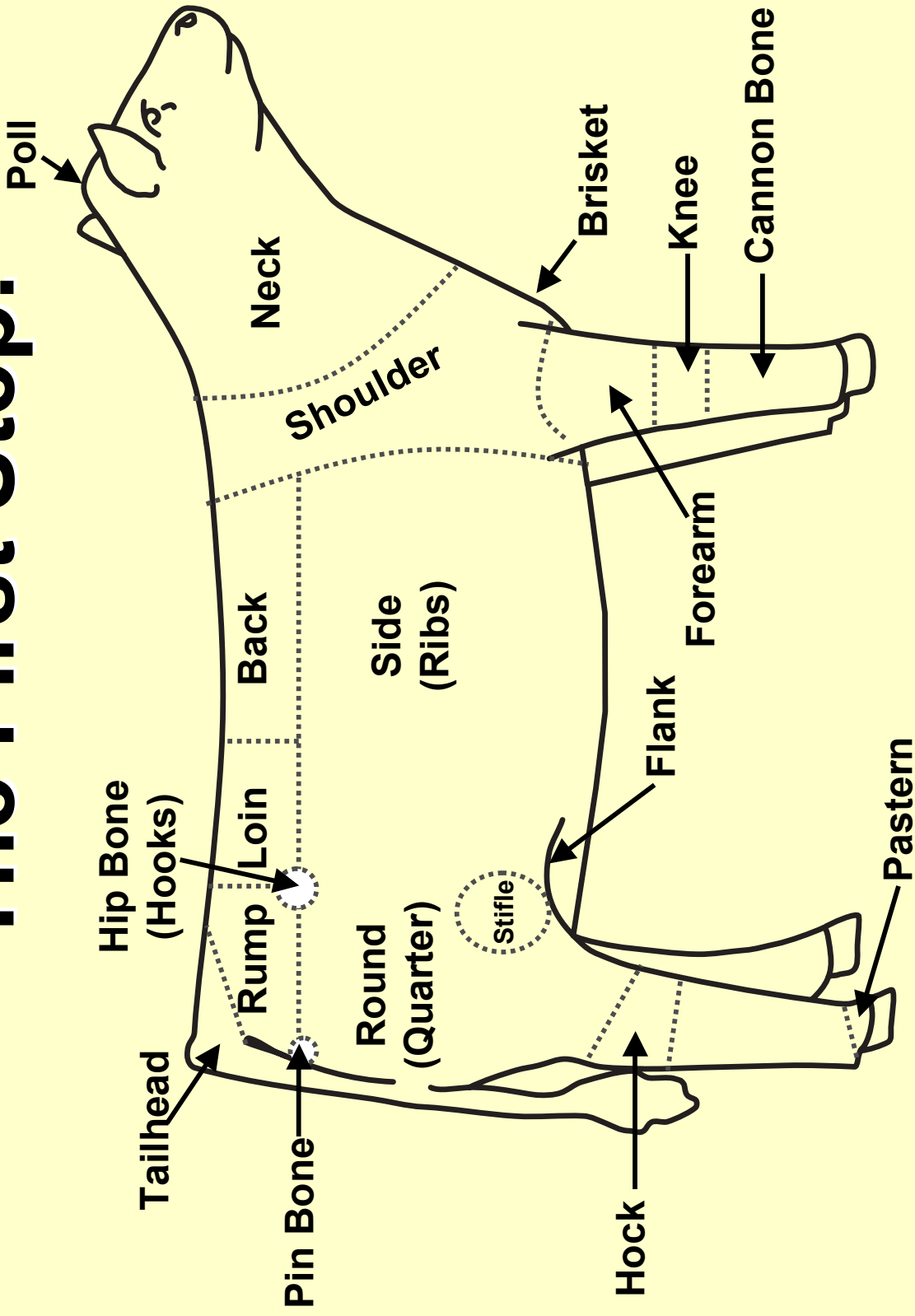


# What traits are important?

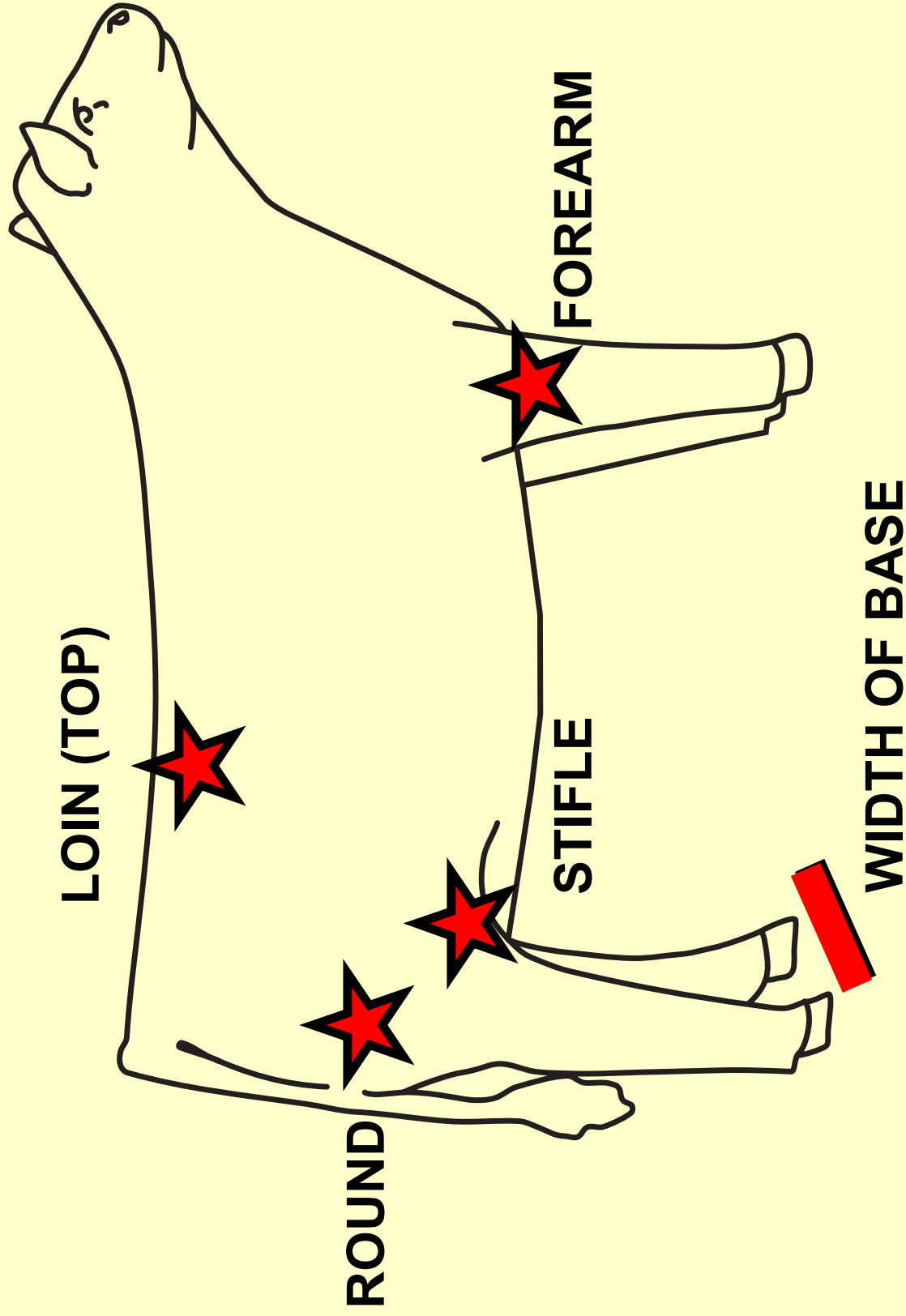
- **Muscle**
  - Sell meat!
- **Fat**
  - Want a lean product!
- **Volume/capacity**
  - Feed Efficiency
  - Production Capabilities
- **Structural Design**
  - Economic
  - Aesthetic “Looks Good”



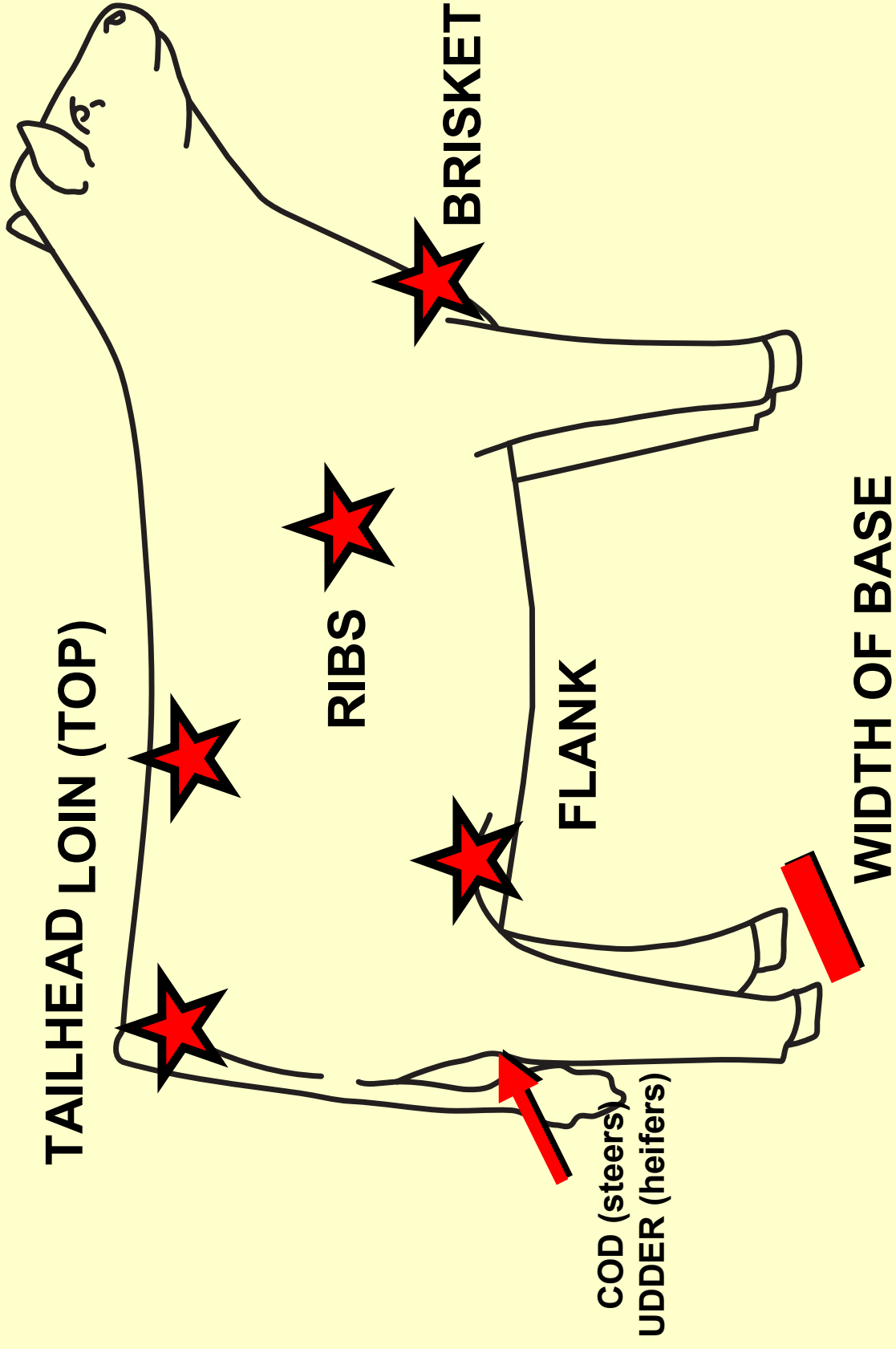
# The First Step!



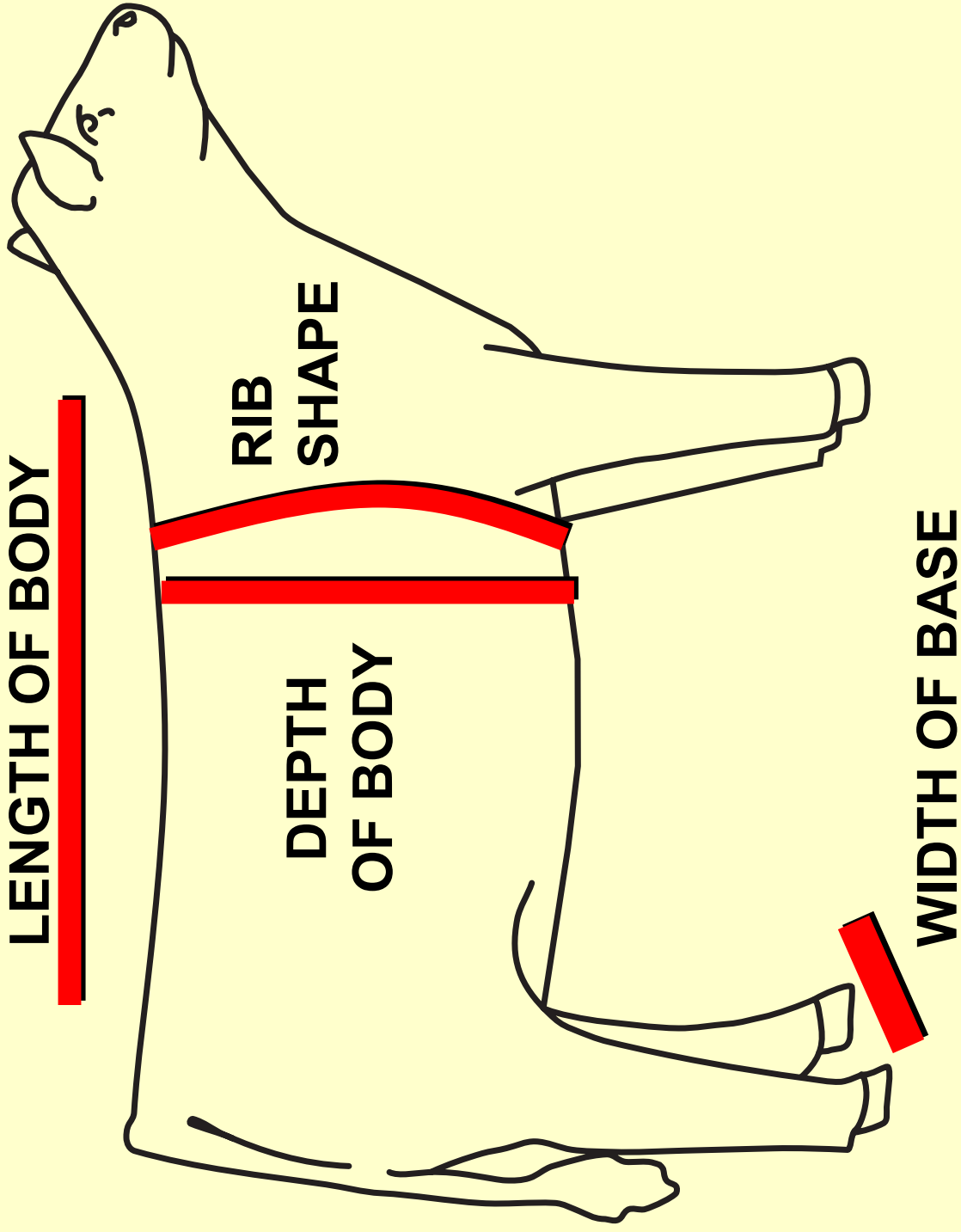
# Evaluating Muscle!



# Evaluating Fat!

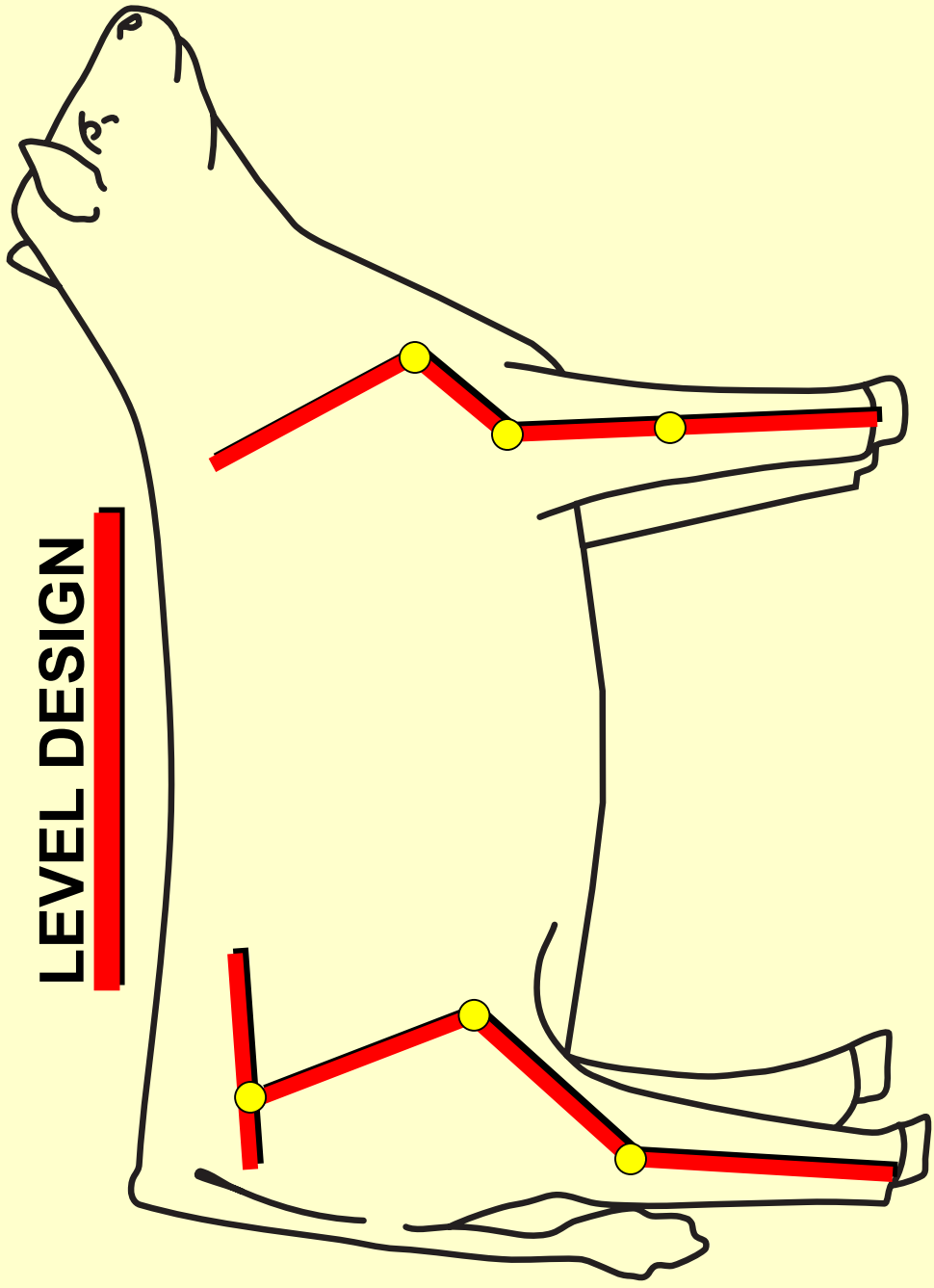


# Evaluating Volume!

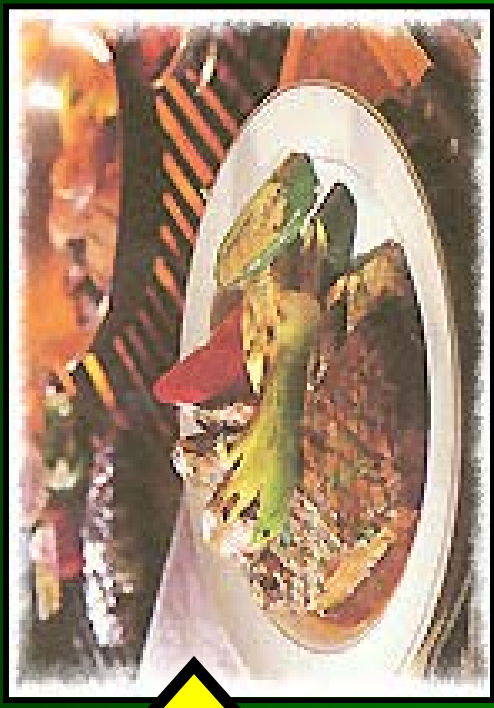
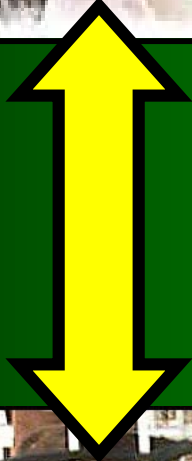


# Evaluating Structure!

**LEVEL DESIGN**



# Beef Cattle Evaluation



# USDA Grading Systems

- Current systems:
  - Feeder Cattle
  - Fed Cattle
    - Yield Grade
    - Quality Grade



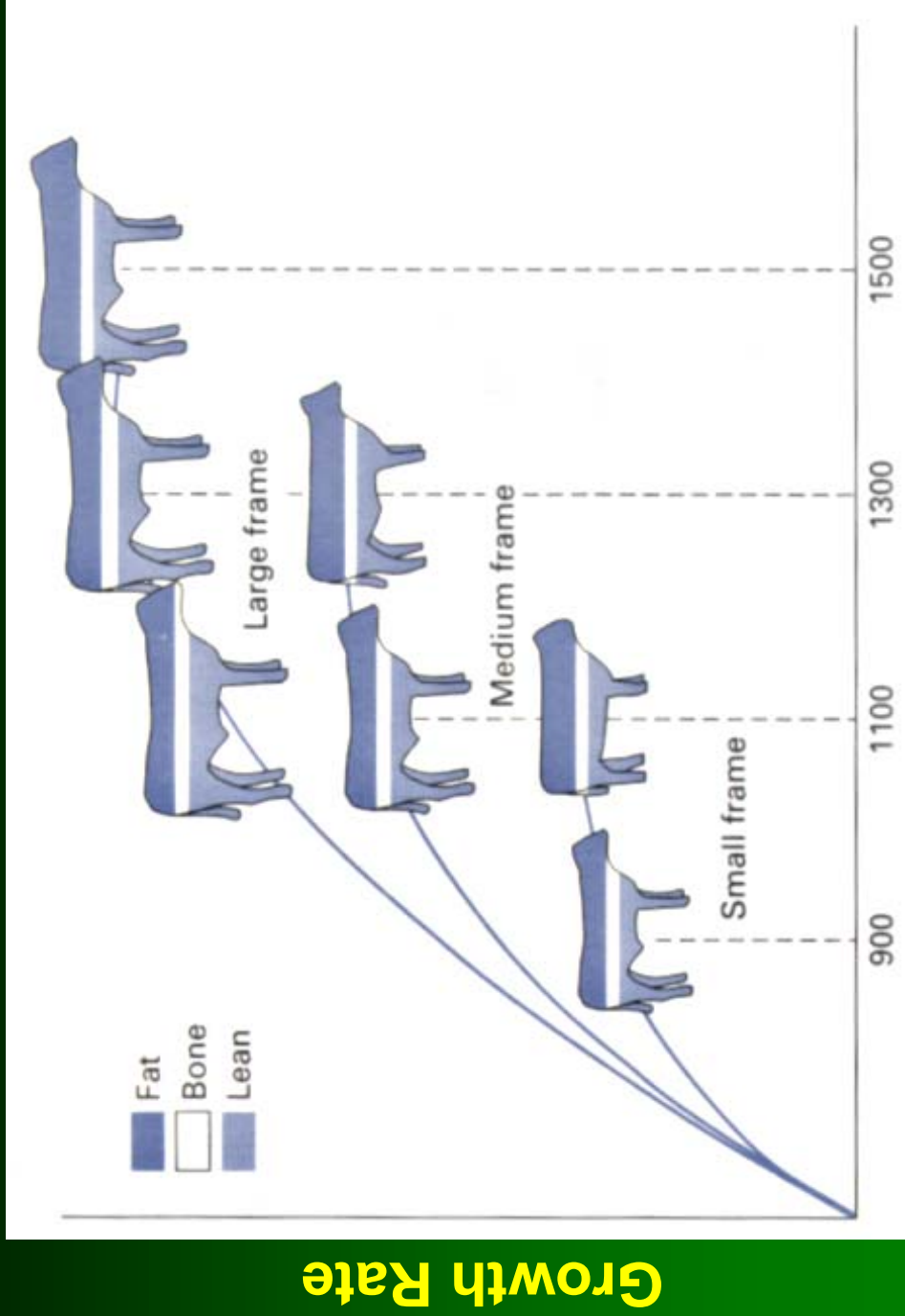
# Feeder Cattle Grading

- Based upon:
  - Frame size
    - Large, medium, small
- Muscling
  - Scale of 1 to 4



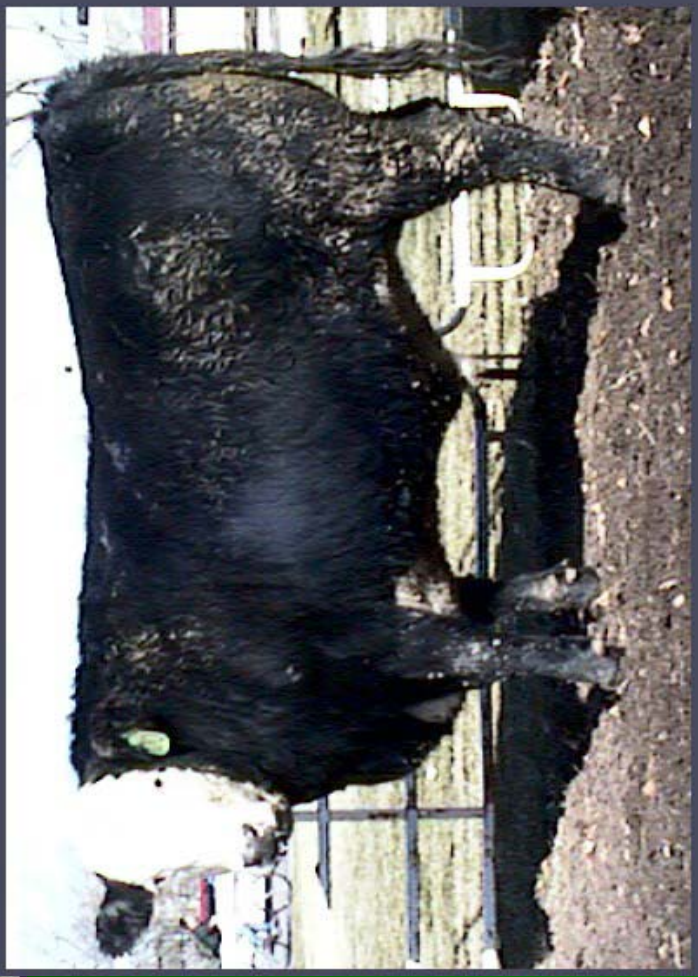
# Feeder Cattle Grading

## Frame Size



Mature Weight

**High Yielding  
(High cutability)**



**Low Yielding  
(Low cutability)**



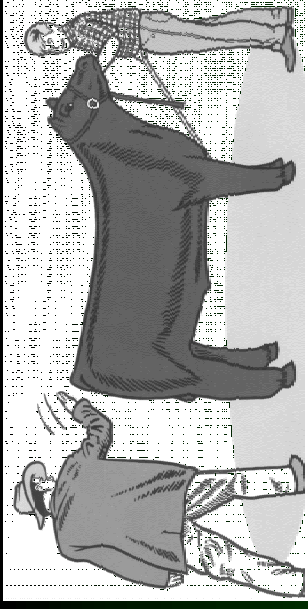
**High Quality Grade  
(Choice +?)**



**Low Quality Grade  
(Standard?)**

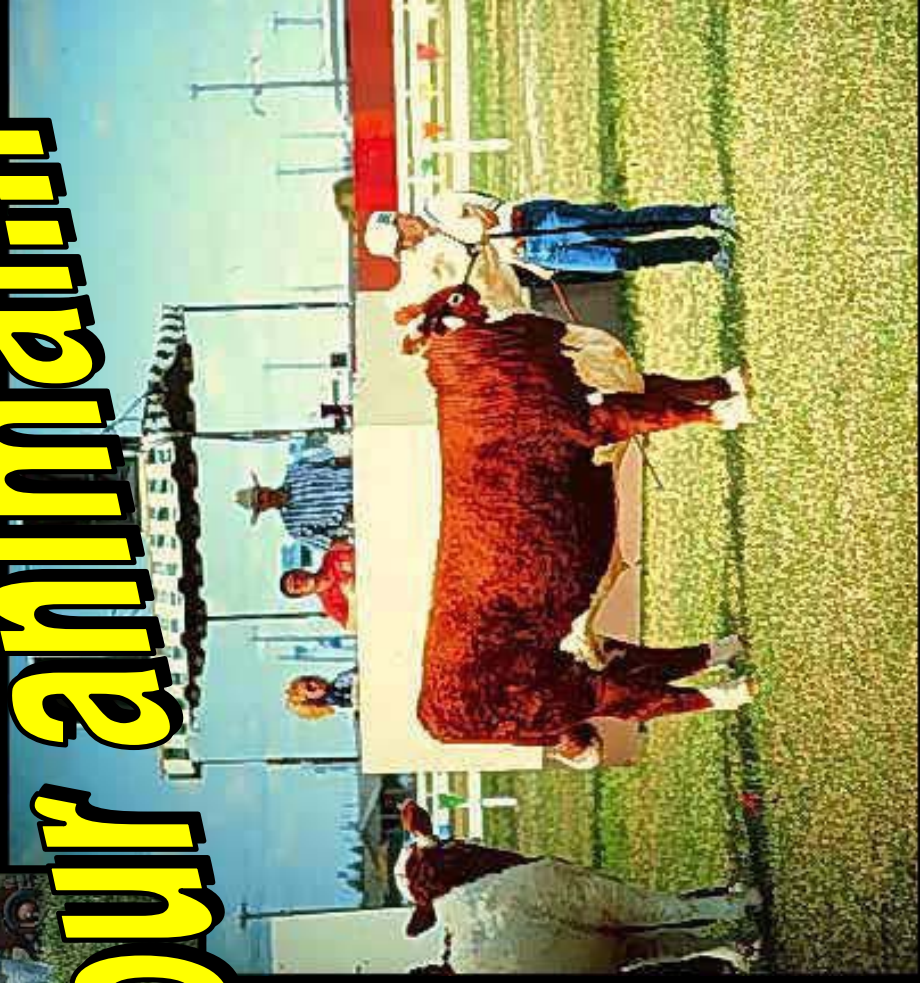
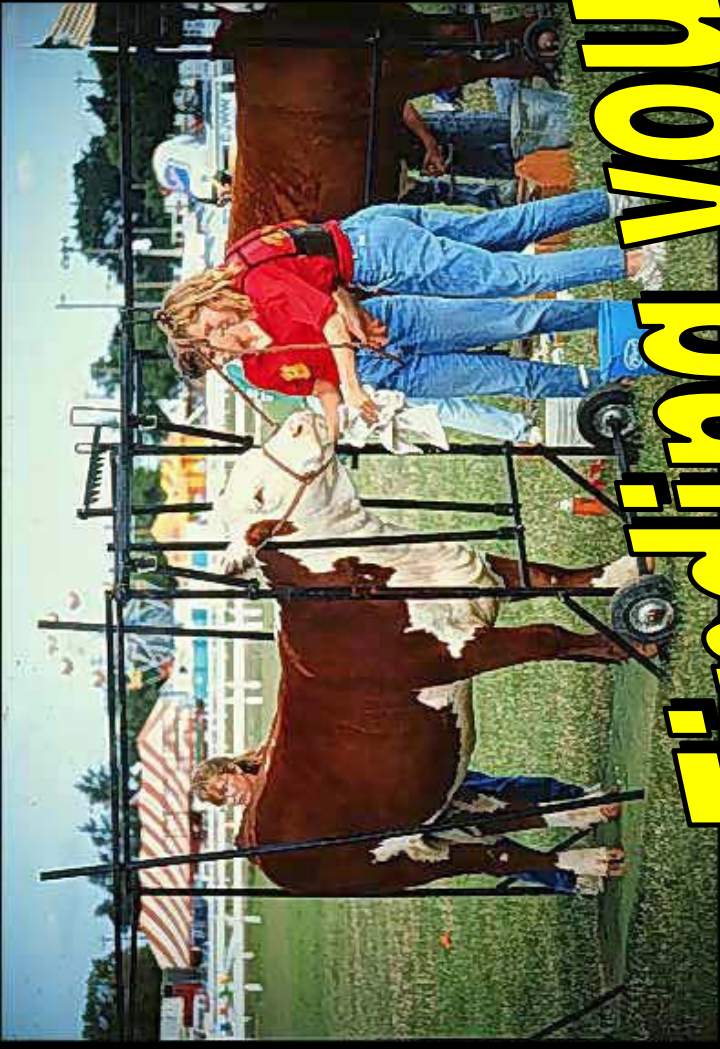


# The optimal steer...



Trait	Range	Goal
Live weight (pounds)	900-1400	1200-1275
Dressing percent	60-64	62-63
Fat Thickness (inches)	0.15-0.80	0.25-0.40
Ribeye area (inches <sup>2</sup> )	12.0-17.0	14.0-16.0
Yield Grade	< 3.5	2
Quality Grade	Select or >	Choice
Feed conversion (lbs feed per lb of gain)	5-8	< 6

# Finding your animal!!!



# **What you need to know prior to purchasing your animal...**

- **When you need to purchase your animal, relative to your fair date**
- **What the animal needs to weigh at the beginning of the project**
- **What is a fair price for the animal**

# Estimating purchase weight

- Large framed calf
- Finished weight ~1250 lbs
- 200 days until fair
- Steers gain about 2.5 lbs/day
- Let's calculate an appropriate beginning weight...

# Estimating purchase weight

$$\begin{aligned} & 200 \text{ days} \times 2.5 \text{ lbs/day} \\ & = 500 \text{ lbs total gain} \end{aligned}$$

$$\begin{aligned} & 1250 \text{ lbs final weight} - 500 \text{ lbs gain} \\ & = 750 \text{ lb beginning weight} \end{aligned}$$

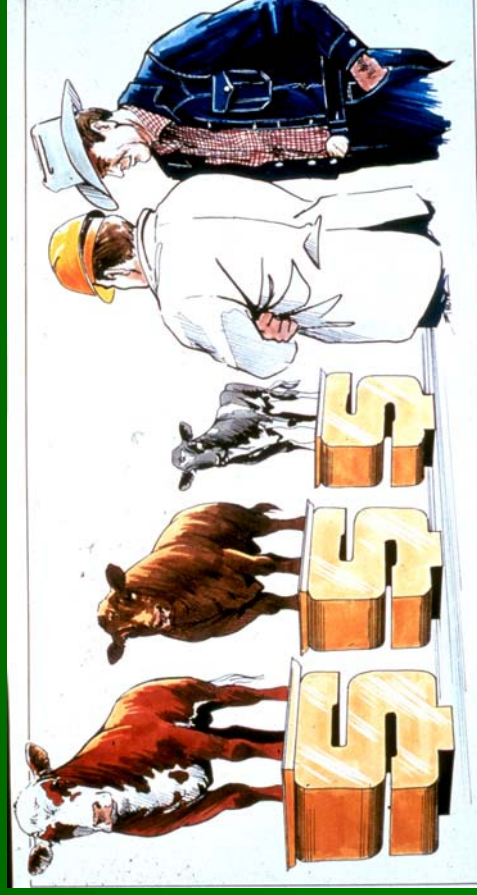
# Other factors to consider...

- Purchase from a reputable producer
  - You are making an investment
  - Ask around!



# Other factors to consider...

- Determine a fair market price
  - Prices vary!
  - Find a good calf at a reasonable price
  - Today's market a 750 lb calf would cost ~ \$1.12/lb or \$840 dollars!



# Other factors to consider...

- Calf's disposition
  - Wild or nervous cattle don't gain well
  - Lower eating quality of the carcass
    - IT'S TOUGH!!
- Safety

