

Retinal Scanner from Optibrand™

Contact Information:

Sales and service:

Dan Baker, North American Sales Manager, Ext.102

E-mail: dbaker@optibrand.com

Company information:

Optibrand Ltd. LLC

123 N College Avenue

Suite 240

Ft Collins, CO 80524

1-866-516-1462

1-970-490-6022

Fax: 1-970-490-6025

e-mail info@optibrand.com

<http://www.optibrand.com/>

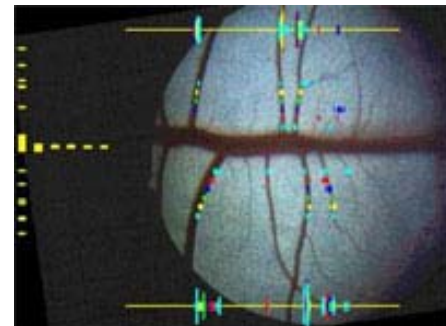
Online Demo:

<http://www.optibrand.com/secureid/demo.htm>

General Information:

OptiReader™ Device consists of

- Hand held computer
 - Views the video on computer's LCD display.
 - Contains global position system (GPS) satellite receiver OEM board and antenna.
- Ocular digital video camera
 - Transmits full motion video at 19 frames per second to computer.
- Software and firmware
 - Analyzes for acceptable image.
 - Presents image to operator for acceptance.
 - Adds latitude and longitude, a satellite set time-date stamp, and the device's CPU identification number to the image record.
 - Allows for auxiliary data to be added with image record. Auxiliary data can be collected from scale heads, barcode readers, electronic ID readers, printers, keyboards or laptop computers either wirelessly or through the devices' USB port.
- CompactFlash™ memory cards stores images and data.
 - A 128MB memory card can hold ~3,700 images.
 - The OptiReader™ Device cannot be booted without a prepared flash card.



Photos from Optibrand website
<http://www.optibrand.com/>

- Software Suite
 - Prepares the memory card for booting.
 - Retrieves the images from the card.
 - Customizable for each customer's needs.
 - Defines the fields for prompting the operator.
 - Written in Java for Windows 98/ME, Windows 2000, and Windows NT.
 - Exports data as text, CSV files, spreadsheets or can send to third-party
- Search Engine
 - Software layer installed on existing hardware or as a complete package which integrates with customers systems using a high-speed interconnection.
 - Search engine uses an API built on standard interprocess communication protocols.
 - Uses an internet connection or by uploading the data from the memory card to run the search.
 - Constantly monitors the data and provides system performance information.
 - Reports anomalous device behavior.

Cost:

- \$2,500
- \$0.75 per animal