

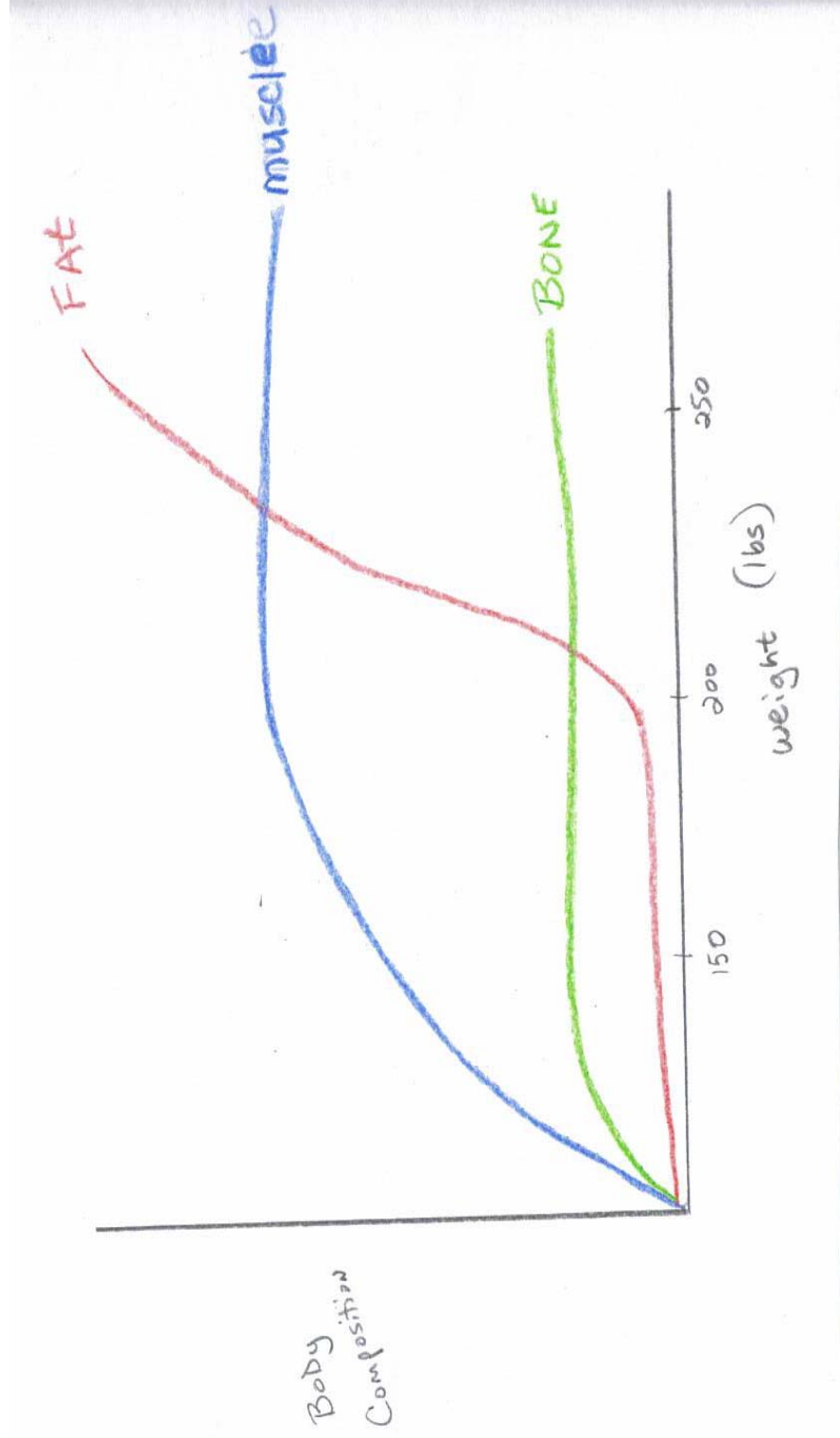
# 2006 Pork Preview Day Paylean / Feeding

**By: Ryan Harrell**

# Growth and Development

- As the pig grows and develops they make less muscle and put on more fat cover.
- Muscle is produced and made, when the pig is younger. (50-150 lbs)
- The pig changes from making muscle to making fat around 200 lbs.

# Growth and Development



# Pig Diets

- Pigs need grain diets high in energy, low in fiber, and adequate protein.
- Corn is the main ingredient for most diets. It is high in energy, digestible, and low in fiber.
- Other ingredients are added to diets for additional protein, fiber, and keeping pigs healthy. (soybean meal, vitamins, minerals, fats, oats, wheat, lysine)
- Lysine is an essential ingredient that pigs need in their diet.

# Suggested Levels in Diets

**Table 1**

**Suggested crude protein and lysine requirements for growing pigs.**

50 to 80 pound weight range

17 to 18 percent of crude protein

0.9 to 1.05 percent of total lysine

81 to 120 pounds

15 to 17 percent of crude protein

0.75 to 0.90 percent of total lysine

121 to 200 pounds

13 to 15 percent of crude protein

0.65 to 0.80 percent of total lysine

201 pounds to Market weight

12 to 13 percent of crude protein

0.55 to 0.75 percent of total lysine

**Requirements vary based on sex, health status, environment, climate, and dietary formulations (if using synthetic lysine the crude protein concentrations will be lower). Gilts should be at the upper end of the range and barrows towards the lower end of the range.**

# What is Paylean ?



Get the Paylean Advantage

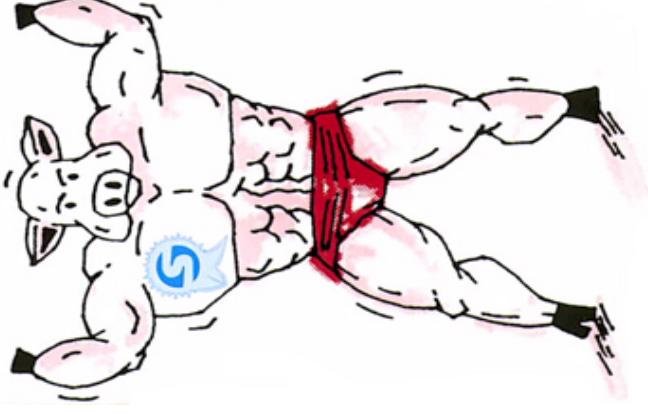
- Paylean is a Feed Additive for market hogs and show pigs.
- It comes in Various Forms: Complete Feed, Pellet Top Dress, or Ground Feed Top Dress.



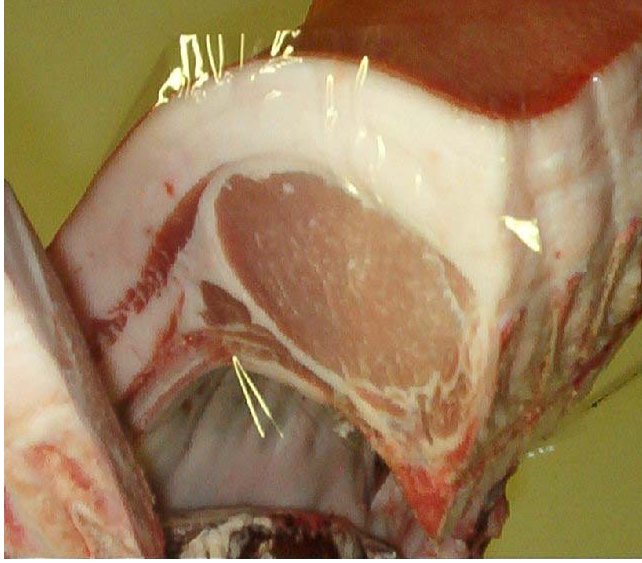
# How Does Paylean Work?

- It takes the existing muscle cells and expands them to become bigger in size. This is done through water intake.

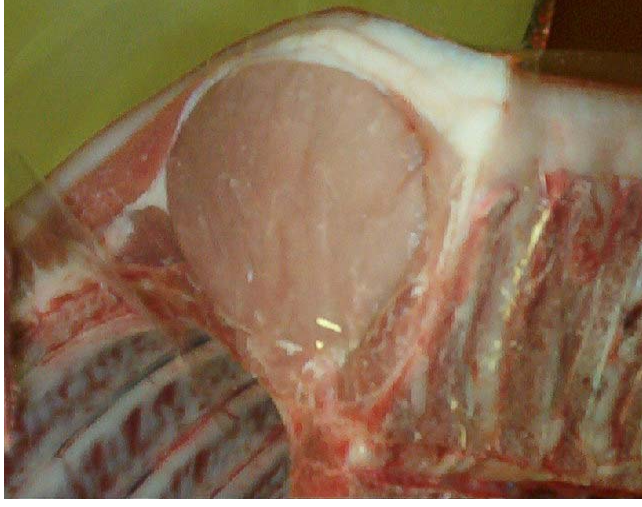
- Acts as a Fat Reducer.



# How Does Paylean Work?



**Before Paylean**



**After Paylean**

# How Do I Feed Paylean?

- 4 gram, 9 gram. (No longer is there an 18 gram level)
- The 18 gram level is an off the label use and is illegal to feed to your pigs.

# Paylean Old Label Use

200	1,800
300	2,700
400	3,600

Paylean 9 Type A Medicated Article into one ton of complete swine feed according to the table below. The concentration in the Type C Medicated Feed. Prepare an intermediate pre-blend of the pre-blend complete feed. Thoroughly mix the required amount in a convenient quantity of feed ingredients, and then mix the ingredients to make a ton of complete feed.

Pounds of Paylean 9 To Add Per Ton of Type C Medicated Feed	Resulting Ractopamine Concentration in Type C Medicated Feed
0.5	4.5 grams/ton ( 5 ppm)
1.0	9 grams/ton (10 ppm)
1.5	13.5 grams/ton (15 ppm)
2.0	18 grams/ton (20 ppm)

**Directions:** Feed continuously to finishing swine as the sole ration from 150 lb (68 kg) to 240 lb (109 kg). Paylean 9 is an increased risk for exhibiting the downer pig syndrome (also referred to as "downer pig syndrome"). Pig handling methods to reduce the incidence of downer pigs should be thoroughly evaluated. Not for use in breeding swine.

**Warnings:** Ractopamine hydrochloride, the active ingredient in Paylean, is a beta-adrenergic agonist. Indiscriminate use should exercise special caution to avoid exposure. Not for use in humans. Keep out of reach of children. Paylean 9 formulation (Type A Medicated Article) poses a low dust potential under usual conditions of use.

# Paylean New Label Use

Pounds of Paylean 9 To Add Per Ton To Make a Type B Medicated Feed	Resulting Ractopamine Concentration in Type B Medicated Feed grams/ton	grams/pound
100	900	0.45
200	1,800	0.90
300	2,700	1.35
400	3,600	1.80

oroughly mix Paylean 9 Type A Medicated Article into one ton of complete swine feed according to the table below to gain the proper concentration in the Type C Medicated Feed. Prepare an intermediate pre-blend of the premix prior to mixing in a complete feed. Thoroughly mix the required amount in a convenient quantity of feed ingredients, then add to the remaining feed ingredients to make a ton of complete feed.

Pounds of Paylean 9 To Add Per Ton of Type C Medicated Feed	Resulting Ractopamine Concentration in Type C Medicated Feed
0.5	4.5 grams/ton (5 ppm)
1.0	9 grams/ton (10 ppm)

**eding Directions:** Feed continuously as the sole ration to finishing swine weighing not less than 150 lbs for the last 45 to 60 lbs (group average) of weight gain prior to slaughter.

**CAUTION:** Ractopamine may increase the number of injured and/or fatigued pigs during marketing. Do not use in breeding swine.

**WARNING:** The active ingredient in Paylean, ractopamine hydrochloride, is a beta-adrenergic agonist. Individuals with cardiovascular disease should exercise special caution to avoid exposure. Not for use in humans. Keep out of the reach of children. The Paylean 9 formulation (Type A Medicated Article) poses a low dust potential under usual conditions of handling and mixing. When mixing and handling Paylean, use protective clothing, impervious gloves, protective eye wear, and a NIOSH-approved dust mask. Operators should wash thoroughly with soap and water after handling. If accidental eye contact occurs, immediately rinse eyes thoroughly with water. If irritation persists, seek medical attention. The material safety data sheet contains more detailed occupational safety information. To report adverse effects, access medical information or obtain additional product information, call 1-800-428-4441.

# Who gets Fed Paylean?

- It is to only be used on barrows and market gilts.
- Do not use Paylean on Boars, Little Pigs, or Breeding Gilts.



# When Do I Feed Paylean?

- Feed the last 2 or 4 weeks before the day of the last show. (County Fair or State Fair)
- You can feed Paylean for **NO LONGER** than 4 weeks. (No withdrawal on Paylean)
- Paylean should be fed with the pig being on full water. Paylean only works properly with water!
- The best results for Paylean are with the step up feeding program.



# What Happens if Paylean is Fed Wrong?



**Feeding Paylean at high doses will cause cracked hooves, lameness, and hives to break out.**

# Do I need to use Paylean?

- Answer: No

Some pigs are lean enough and don't even need the product. Other pigs who have been held could use Paylean as a way to become more fresh.

# Questions

