

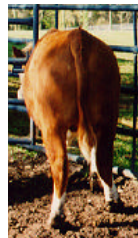
Certified Hereford Beef Scenario

Class 1

Rank these steers as they would best be marketed in the Certified Hereford Beef Program.

Criteria:

- ◆ Must be Hereford or Hereford x British
- ◆ No visible Brahman or Dairy influence
- ◆ Marketed on a grid basis
- ◆ Severe discounts for carcasses over Yield Grade 3
- ◆ Severe discounts for carcasses <575 and >850 lbs.
- ◆ Premiums paid to Select and Choice, Yield Grades 1 and 2



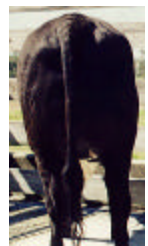
Steer #1 **Weight:** **1050**
WDA: **1.8**



Steer #2 **Weight:** **1450**
WDA: **2.0**



Steer #3 **Weight:** **1120**
WDA: **1.9**



Steer #4 **Weight:** **1225**
WDA: **2.0**

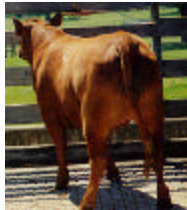
Maverick Ranch Association Scenario

Class 2

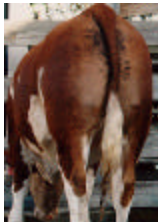
Rank these steers as they would best be marketed in the Maverick Ranch Association program.

Criteria:

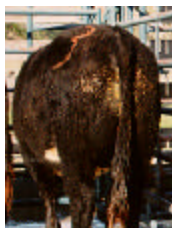
- ◆ Prefer Exotic or Exotic x English cattle
- ◆ No bulls
- ◆ Marketed on a grid basis
- ◆ Severe discounts for carcasses Yield Grade 3 and over
- ◆ Premiums paid to Prime, no price break between Choice/Select
- ◆ \$45 premium to YG 1, \$20 premium for YG 2
- ◆ Discounts for light and heavy carcasses



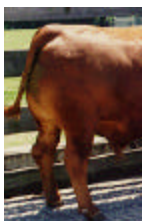
Steer 1	Live Weight	1133
	FOE	.35



Steer 2	Live Weight	1150
	FOE	.4



Steer 3	Live Weight	1405
	FOE	.7



Steer 4	Live Weight	1018
	FOE	.55

Market Steers Class 3



Steer 1

Live Wt.	1050
FOE	.3



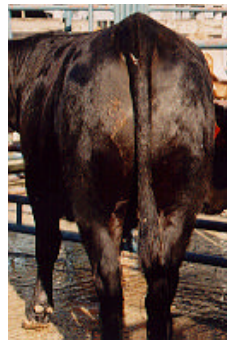
Steer 2

Live Wt.	1075
FOE	.25



Steer 3

Live Wt.	1230
FOE	.6



Steer 4

Live Wt.	1110
FOE	.45