

# Limousin Heifers

## Class 1

Rank these heifers as replacements for a purebred operation in which the primary product is terminal bulls for the commercial producer. Bull buyers have limited labor at calving and need to improve growth performance of their calves. Customers also retain ownership of all marketed offspring throughout the feeding process.

Heifer ID	BE PD	WE PD	YE PD	ME PD
1	1.5	13	25	-1
2	3.6	14	25	2
3	2.6	23	38	6
4	2.3	23	38	6

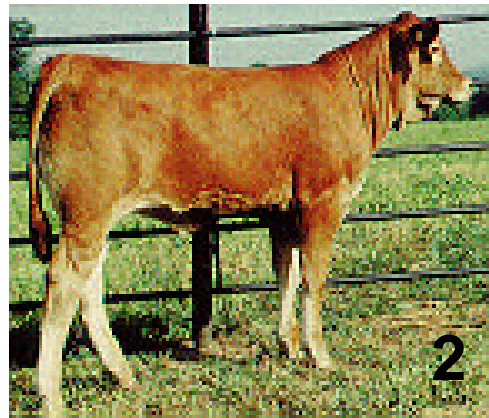


# Limousin Heifers

## Class 2

Rank these heifers as replacements for a purebred operation, which generates its own replacement females. Elite male offspring from these females will be sold in an annual bull sale, the female offspring not retained as replacements will be sold in an annual female sale. Customers tend to have limited labor and feed resources.

Heifer ID	BEPD	WEPD	YEPD	MEPD
1	-1.8	9	22	10
2	1.1	10	19	7
3	1.6	12	21	13
4	2.9	15	28	6



# Limousin Heifers

## Class 3

Rank these heifers as replacements for a purebred operation, which sells terminal sires to Southeastern commercial producers. Bulls from these heifers will be used on moderate framed, mature Brangus and Braford cows. Most customers will market all calves prior to slaughter.

Heifer ID	BEPD	WEPD	YEPD	MEPD
1	6.7	41	57	12
2	3.5	17	34	8
3	2.8	20	37	11
4	3.5	20	34	6

