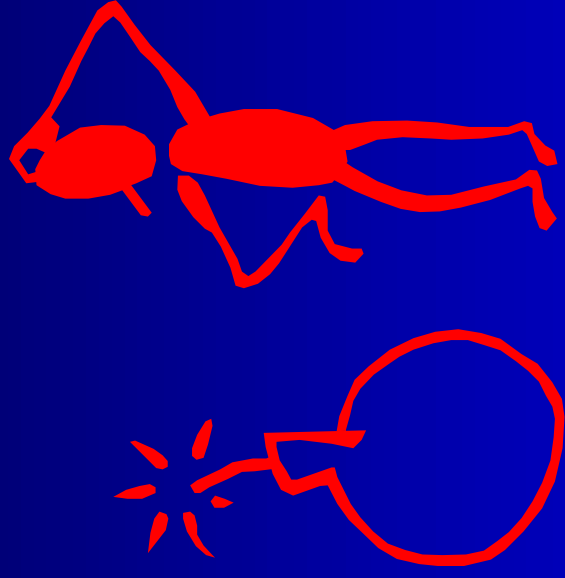


Evaluating Volume/Capacity



Developed by:

Celina Johnson

University of Florida

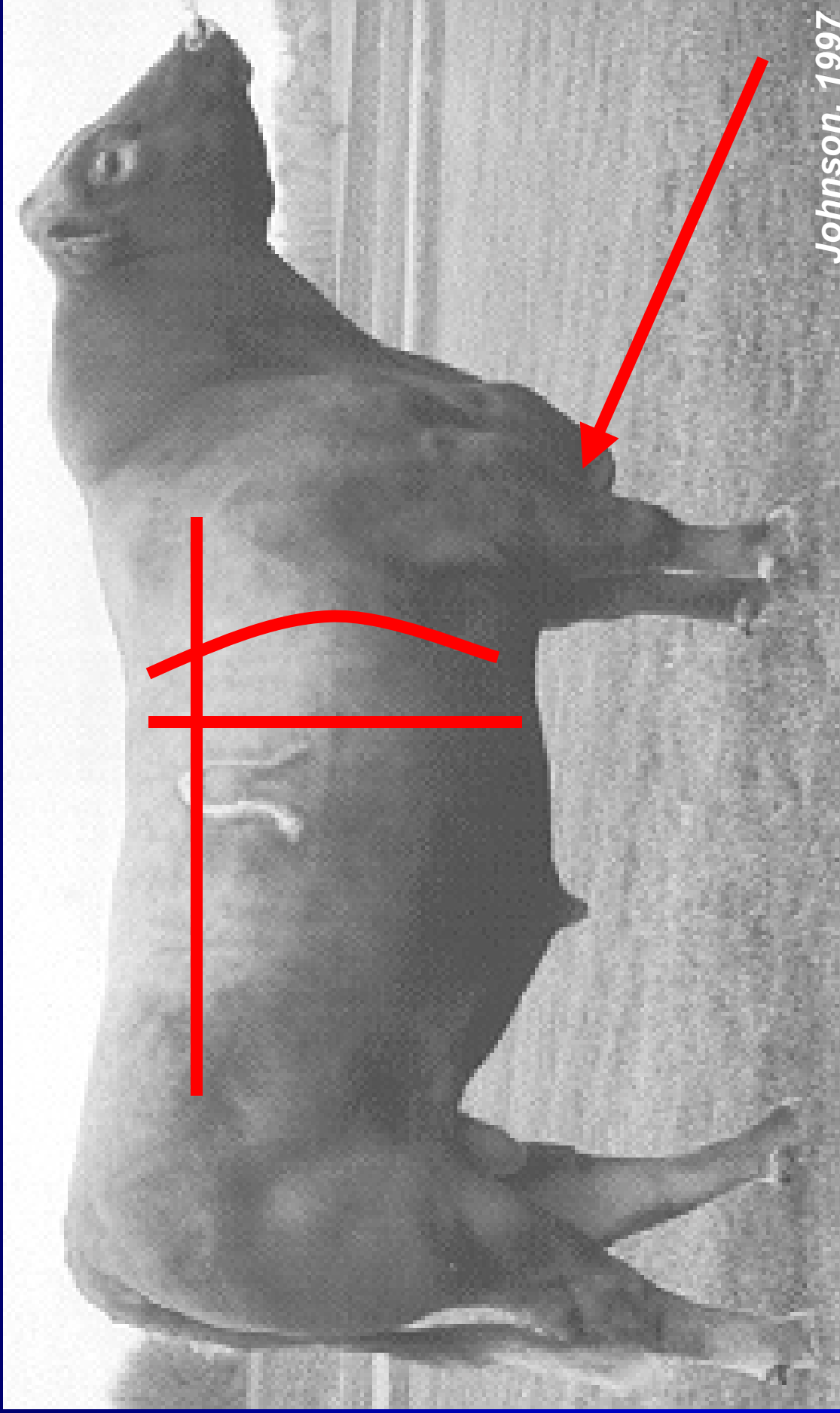
Why is Volume Important?

- **Feed Efficiency/Conversion**
- **Fleshing Ability**
- **Production Capabilities (sows - longevity in crate)**

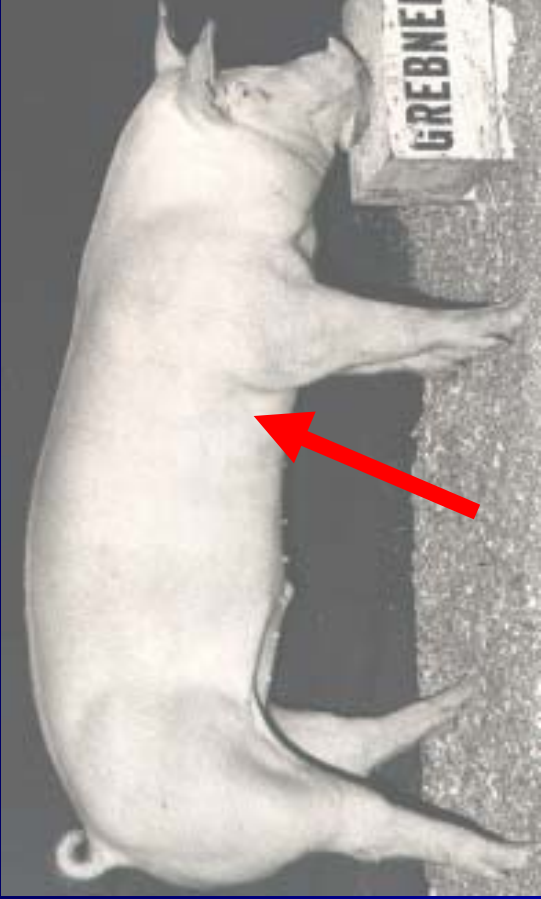
Volume Indicators

- Depth of Body
- Rib Shape
- Width of Chest
- Length

Volume Indicators

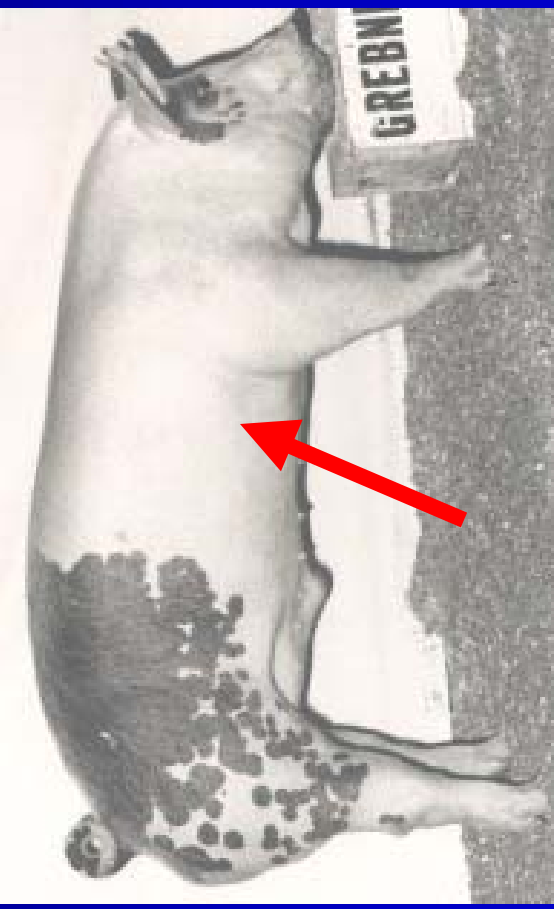


Contrasting Levels of Volume



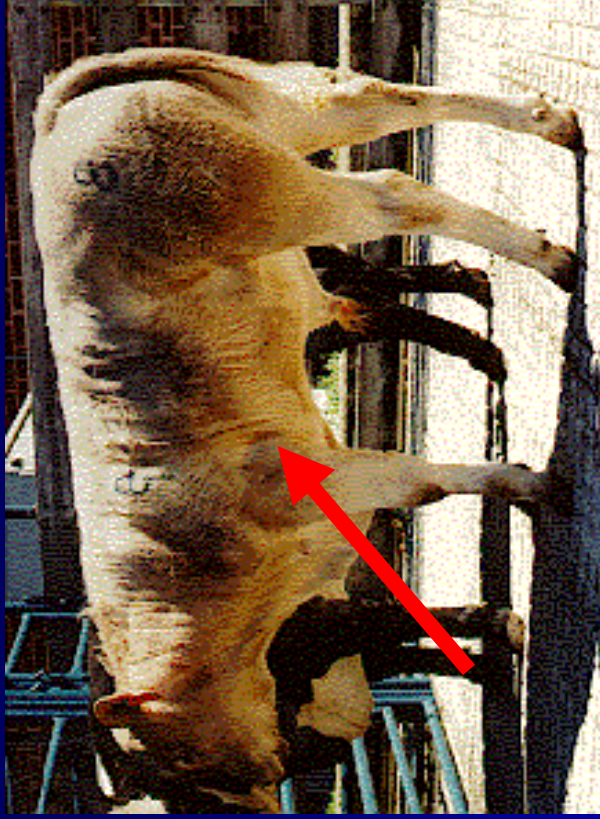
☹️ **Shallow Sided**

Hog Example



😊 **Deep Bodied**

Contrasting Levels of Volume



☹️ **Shallow Sided**

Cattle Example



😊 **Deep Bodied**

Contrasting Levels of Volume



☹️ **Narrow Based, Narrow Chest**

Sheep Example



😊 **Wide Based**