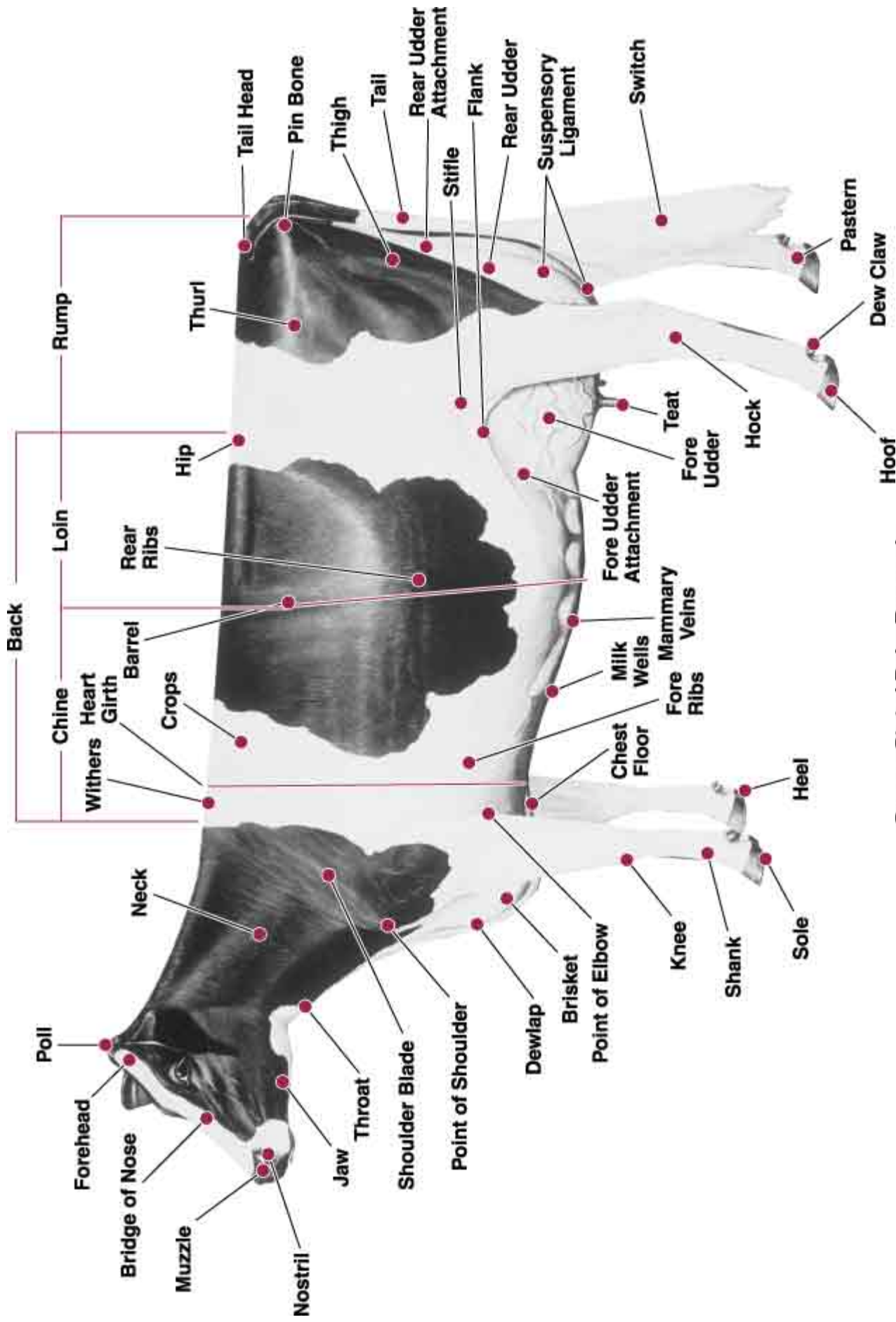




Body Capacity

Ben Krahn
Dairy Research Center
Oregon State University



Poll

Forehead

Bridge of Nose

Muzzle

Nostril

Neck

Jaw

Throat

Shoulder Blade

Point of Shoulder

Dewlap

Brisket

Point of Elbow

Knee

Shank

Sole

Heel

Back

Chine

Withers

Heart Girth

Barrel

Crops

Loin

Rear Ribs

Hip

Rump

Thurl

Tail Head

Pin Bone

Thigh

Tail

Rear Udder Attachment

Stifle

Flank

Rear Udder

Suspensory Ligament

Switch

Chest Floor

Milk Wells

Mammary Veins

Fore Ribs

Fore Udder Attachment

Fore Udder

Teat

Hock

Hoof

Dew Claw

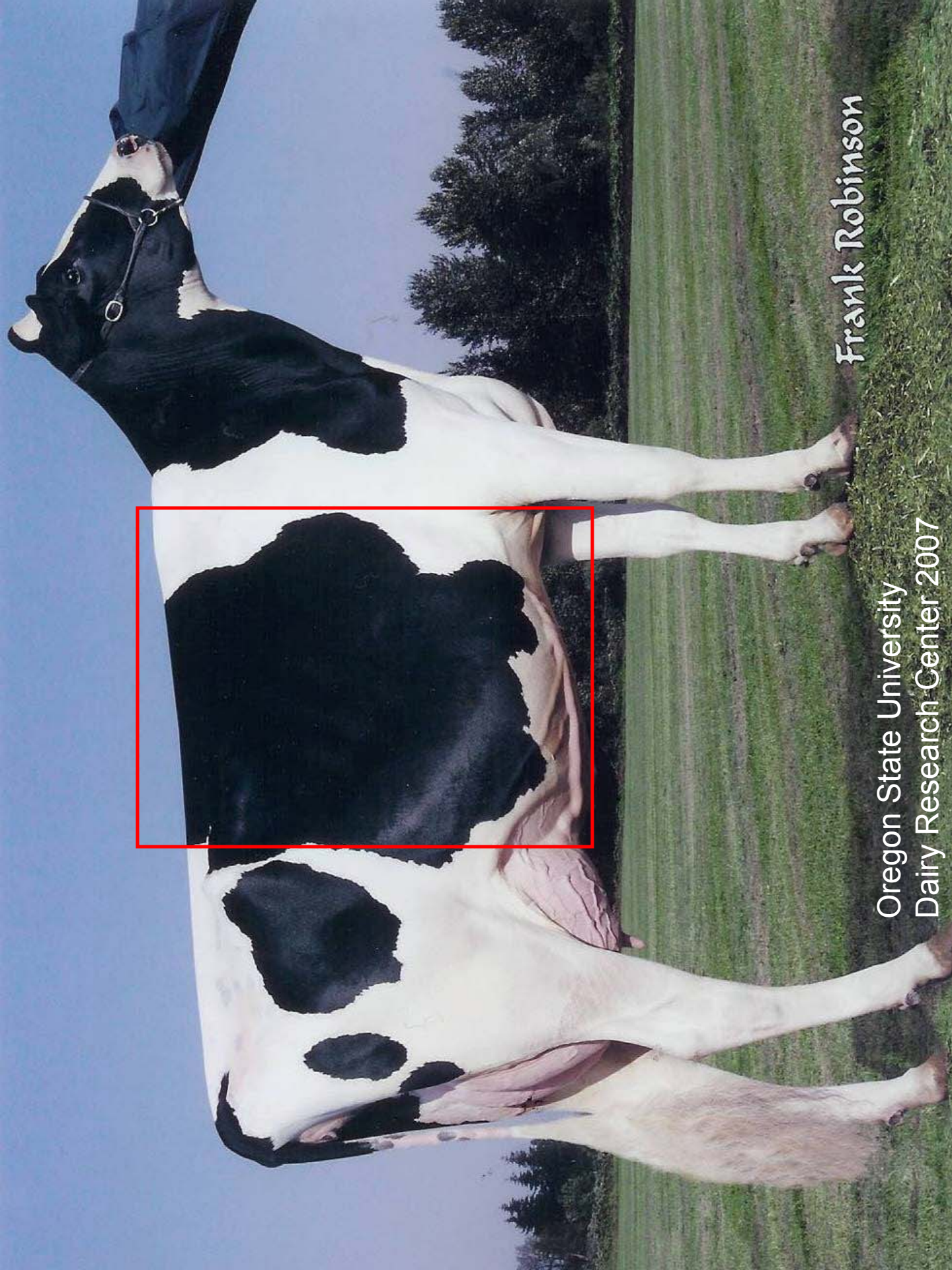
Pastern

Body Capacity

- Capacity of the cow
 - Barrel
 - Chest
- Age is a factor

Why is Body Capacity Important?

- Provides capacity to eat
- Width opens up space for mammary system and front end



Frank Robinson

Oregon State University
Dairy Research Center 2007

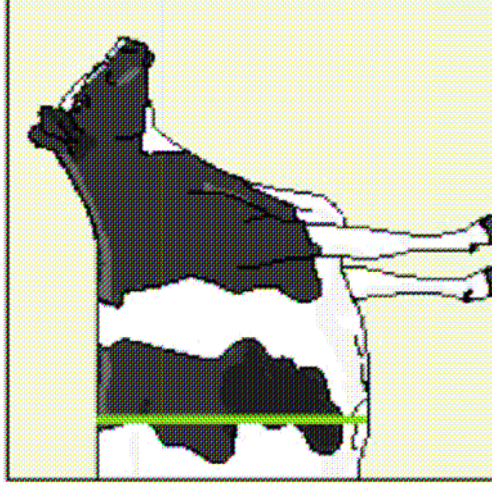
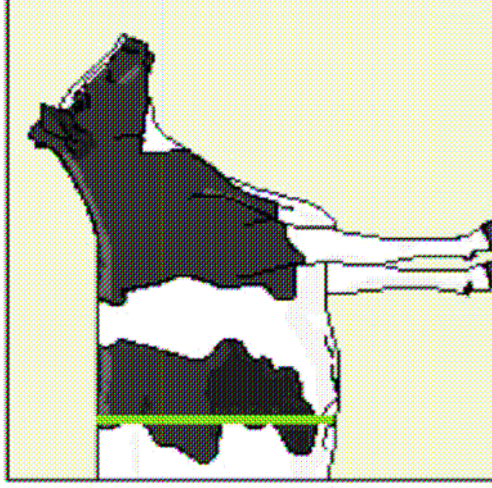
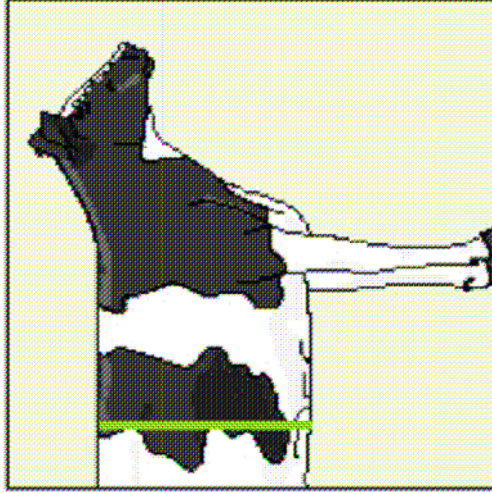
Barrel

- Long, deep, and wide
- Depth and spring of rib increase toward the rear with a deep flank

Chest

- Deep and wide floor
- Well sprung fore ribs blending into the shoulder

Body Capacity



Body Capacity Terms

- She is deeper through her heart, fore & rear rib.
- She shows more openness of rib when viewed from side & more spring of rib when viewed from the rear.
- She shows more length, depth and overall capacity to her barrel.

Body Capacity Terms

- More width and strength throughout
- More width and strength in the chest
- Fuller behind the shoulders
- Deeper in the chest

Body Capacity Terms

- Wider through the chest floor
- Deeper in the rear rib
- A stronger, more powerful cow

Body Capacity Terms

- A cow with more strength and power
- More powerful through the front end

Summary

- What are the 2 components of body capacity?
- Why is body capacity important?

Reasons

5 year-old Holsteins



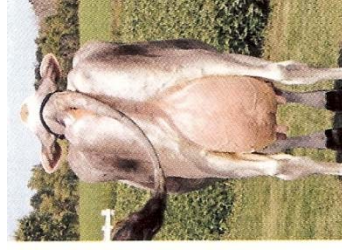
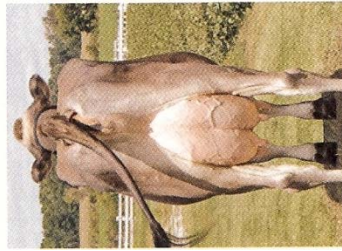
5 year-old Holsteins



Time to Practice

- Place the animals using all traits.
 - Brown Swiss 5 year-olds
 - Guernsey 4 year-olds
- Take notes, and prepare reasons.

Brown Swiss



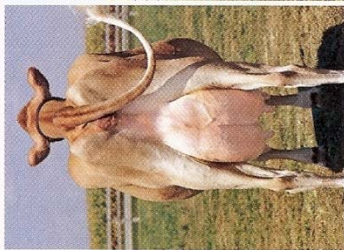
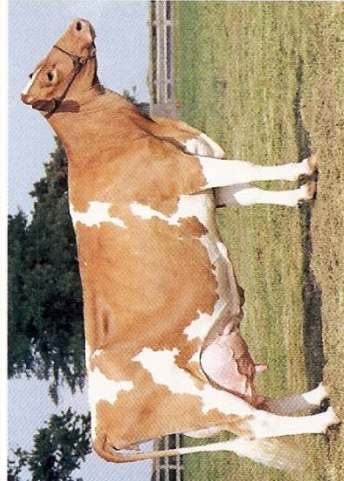
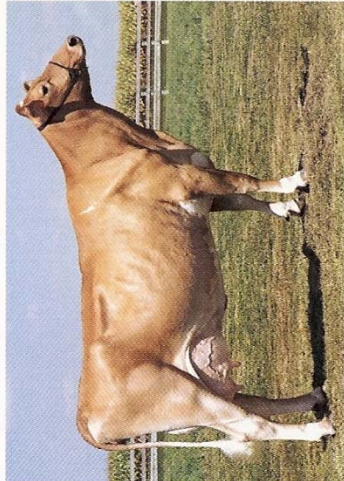
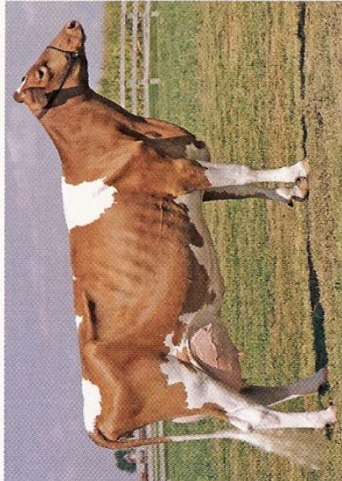
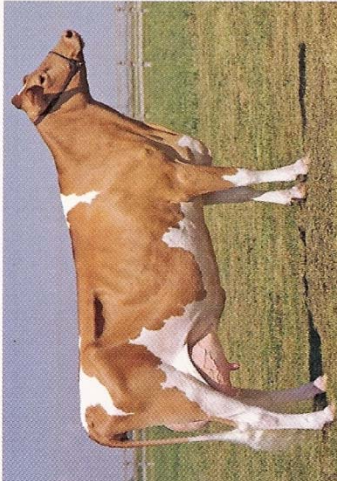
1

2

3

4

GOOSEY





1

2

3

4

Official

- Placing
 - Brown Swiss 5 year-olds
 - 1-3-4-2 with cuts of 2-5-2
 - Guernsey 4 year-olds
 - 4-1-2-3 with cuts of 3-1-3
- Reasons (click on speaker to listen)
 - Brown Swiss 
 - Guernsey 

References

- Purina Mills
 - <http://dairy.purina-mills.com>
- Holstein Association
 - <http://www.holsteinusa.com>
- American Jersey Association
 - <http://www.usjersey.com>
- Hoards Dairyman
 - <http://www.hoards.com>
- World Holstein Friesian Federation
 - <http://www.whff.info>