



600



700

Elder

## HEIFER CALVES



705



620

**QUESTIONS:**

- A. The red heifer?
- B. The heifer that combines style with the most depth and volume?
- C. The heifer that is longer rumped and longer sided between 2 & 3?
- D. The round made early maturing heifer?
- E. The white tailed heifer?

**ANSWERS:**     A. 3    B. 2    C. 3    D. 1    E. 1

**PLACING:**                     2-3-4-1 with cuts of 2-6-4

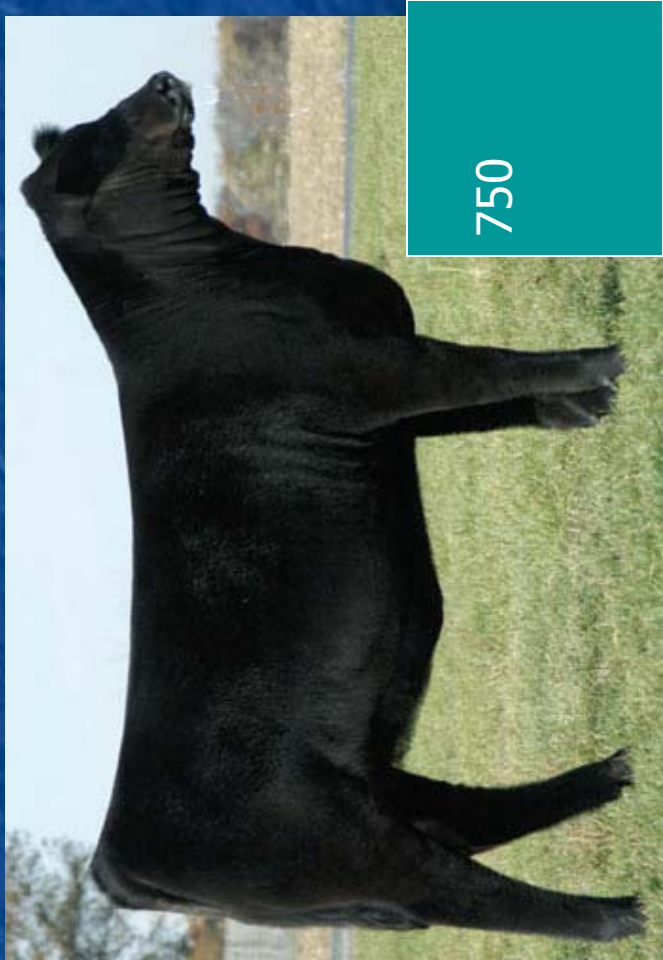


720



595

HEIFER CALVES 2



750



600

QUESTIONS:

- A. The rounder made "steery" appearing heifer between 1 & 3?
- B. The more feminine deeper sided heifer between 1 & 3?
- C. The leveler topped heifer between 2 & 4?
- D. The heaviest boned heifer?
- E. The gray heifer?

ANSWERS:     A. 1   B. 3   C. 4   D. 1   E. 4

PLACING:                     3-1-4-2 with cuts of 3-7-2



585

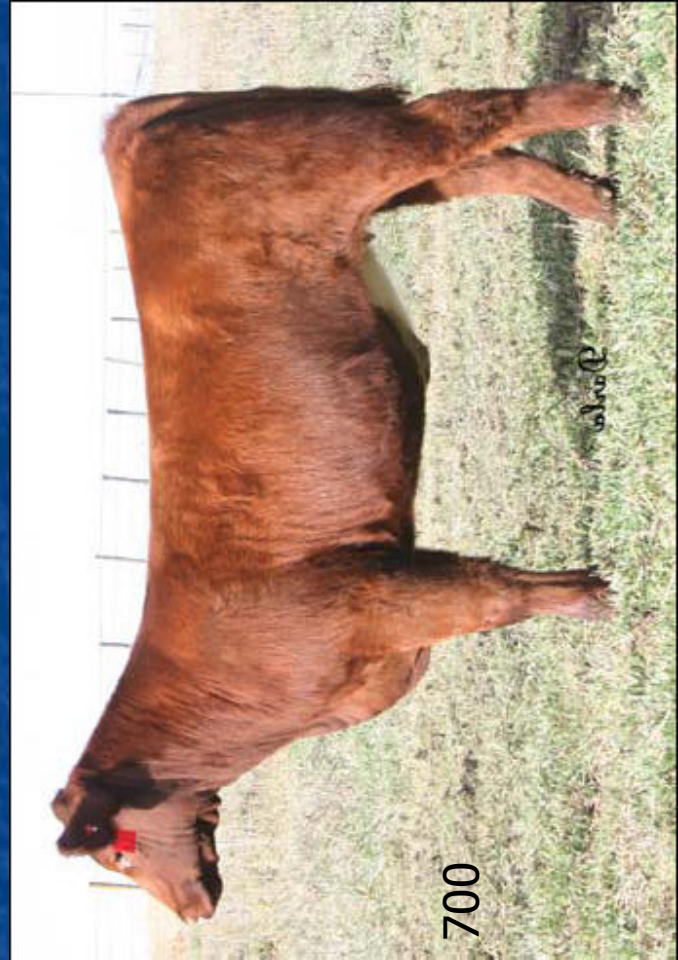


575

SHORTHORN HEIFER CALVES



629



700

**QUESTIONS:**

- A. The pounds heavy high WDA heifer?
- B. The white legged heifer?
- C. The heifer that is fresher fronted being cleaner and trimmer necked between 1 & 2?
- D. The longer rumped, longer sided heifer between 1 & 2?
- E. The heifer that carries down farther in her rear flank between 3 & 4?

**ANSWERS:**

A. 4    B. 1    C. 2    D. 1    E. 3

**PLACING:**

4-3-2-1 with cuts of 6-6-2



575

*Paulsen Cattle Co.*



670

*Paulsen Cattle Co.*

BABY CROSS HEIFERS



620



640

*Paulsen Cattle Co.*

QUESTIONS:

- A. The growthy well balanced heifer?
- B. The heifer with the longest cannon bone?
- C. The heifer that is longer necked between 2 & 4?
- D. The heifer with the high tail head?
- E. The early maturing heifer?

ANSWERS:     A. 2     B. 4     C. 2     D. 4     E. 1

PLACING:                     2-4-3-1 with cuts of 3-4-6