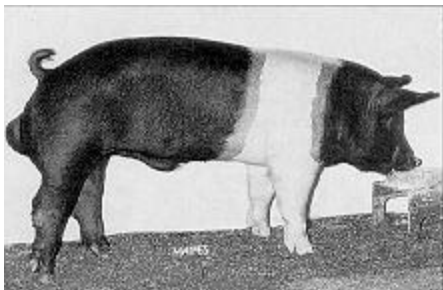


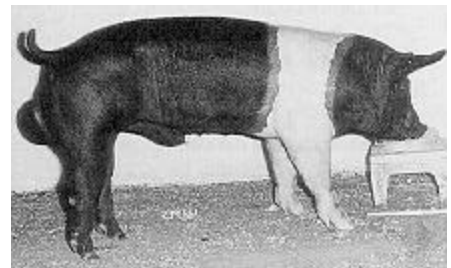
Hampshire Boars

ID	Days EPD	BF EPD	TSI
1	-6.0	-.05	122.2
2	-3.90	-.09	115.0
3	3.30	.02	100.3
4	4.20	-.07	104.4

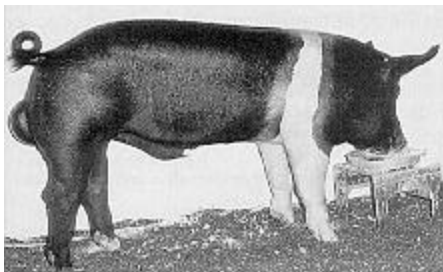
Select these boars as terminal sires for a commercial farrow to finish operation. These boars will be mated to white line females and all offspring sold on a lean value basis.



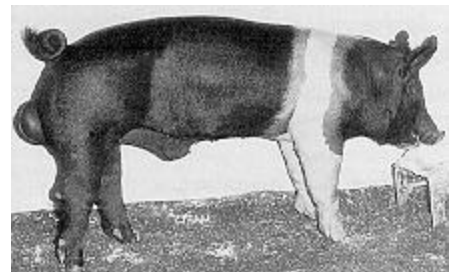
1



2



3

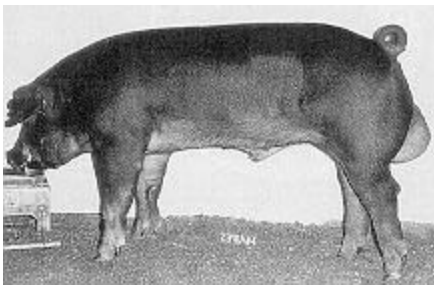


4

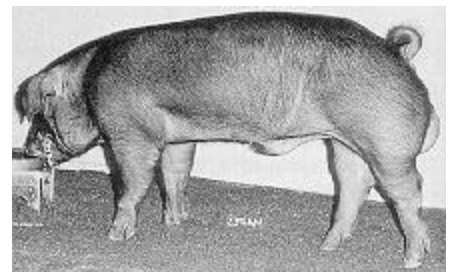
Duroc Boars

ID	DAYS EPD	BF EPD	TSI
1	1.15	.01	100.3
2	-2.20	.01	105.6
3	-6.80	-.02	126.1
4	-2.90	.00	108.0

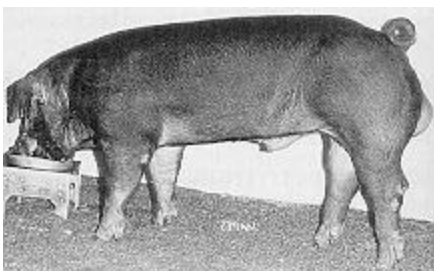
Select these boars as terminal sires for a commercial farrow to finish operation. These boars will be mated to white line females and all offspring sold on a lean value basis.



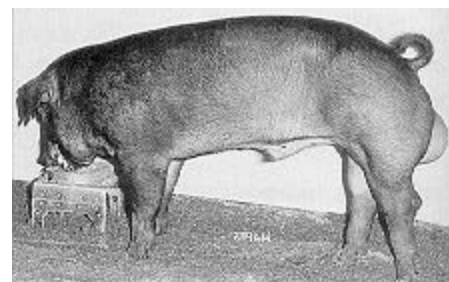
1



2



3

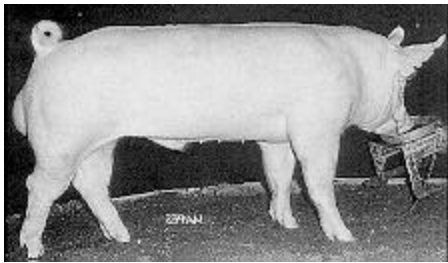


4

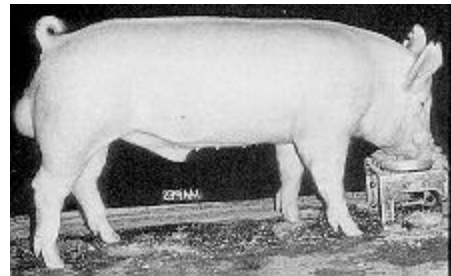
Yorkshire Boars

ID	Days	BF	NBA	LWT	MLI	TSI	SPI
1	-5.06	-.10	1.00	6.87	128.6	134.5	114.0
2	3.47	0.00	.85	5.55	118.6	109	108
3	-3.62	-.09	.72	4.70	120	126	108.6
4	-3.3	.12	.70	3.5	108	125	105

Boars are to be bred to Landrace gilts to produce commercial F₁ gilts as replacements for a terminal production system.



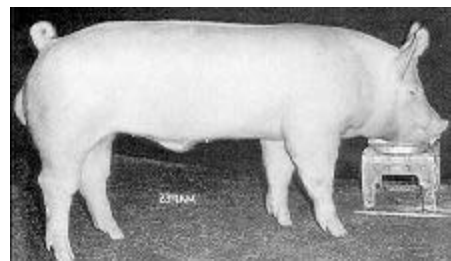
1



2



3



4