

Beef Cattle Selection



Selecting Feeder Cattle,
Breeding Heifers, and Bulls

Overview

- Primary Considerations
- Feeder Cattle
- Breeding Heifers
- Bulls
- Expected Progeny Differences
- Keep/Cull Heifers

Primary Considerations

- What are your goals?
- Environment
 - Weather
 - Feed Resources
 - Labor Resources
- Basic Selection Criteria
 - Breed
 - Age
 - Sex (feeder cattle)
 - Weight and Condition

Feeder Cattle Selection

- Phenotypic Priorities
 - Muscle
 - Condition (fatness vs. trimness)
 - Capacity and Frame Size
 - Structural Correctness
- Performance Traits
 - Weight per Day of Age
 - Feed Efficiency



Breeding Heifers

- Structural Correctness
- Volume and Capacity
- Balance and Femininity
- Condition and Udder Development
- Muscle
- EPDs

Bulls

- Structural Correctness
- Muscle
- Balance
- Capacity and Condition
- Testicular Size and Masculinity
- EPDs

Expected Progeny Differences

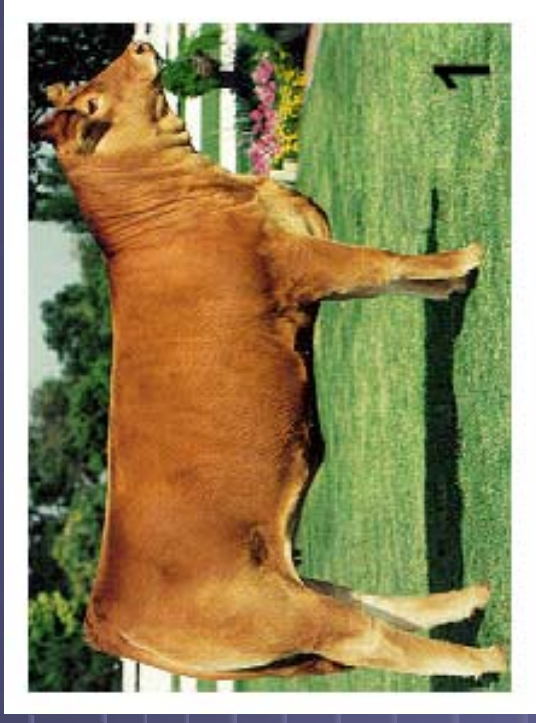
- “the differences in performance expected from the offspring of one individual compared to the offspring of another individual, within the same breed”
- *Ensminger and Perry, 1997*
- Prediction of how the offspring will perform, NOT the individual
- Largest values are not always best
- Accuracy is important
- Not comparable between breeds, utilize breed averages

Expected Progeny Differences

- Common traits
 - BW=Birth Weight
 - WW=Weaning Weight
 - YW=Yearling Weight
 - MA, MM=Milking Ability, Maternal Milk
 - TM=Total Maternal
 - SC=Scrotal Circumference
- Others (not all breeds)
 - CE=Calving ease
 - GL=Gestation length
 - STAY=Stayability
 - DOC=Docility
 - REA=Rib eye area
 - MS=Marbling Score
 - BF, BFT=Backfat, backfat thickness
 - HCW=Hot carcass weight

Keep/Cull Limousin Heifers

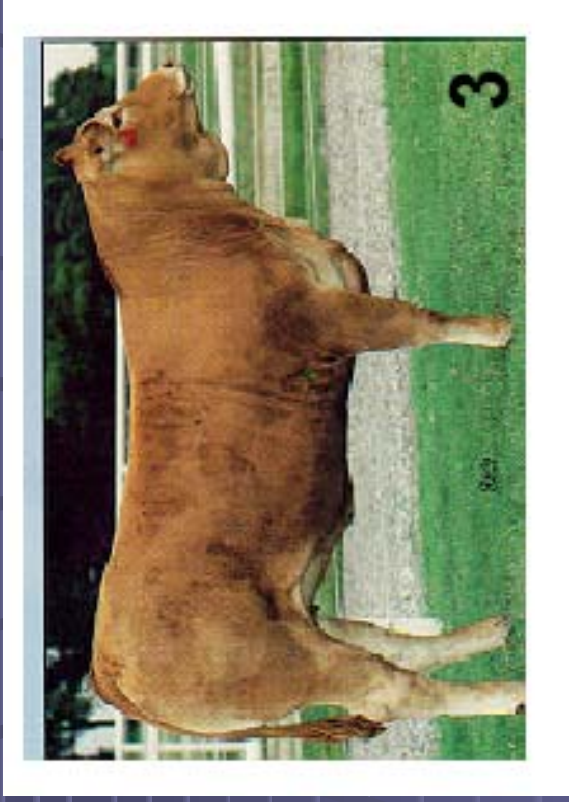
#1



EPDs:

BW	WW	YW	MA	SC
0.3	14	30	8	.2

#2



EPDs:

BW	WW	YW	MA	SC
3.4	25	40	6	.12

#3



EPDs:

BW	WW	YW	MA	SC
2.5	28	49	12	.33

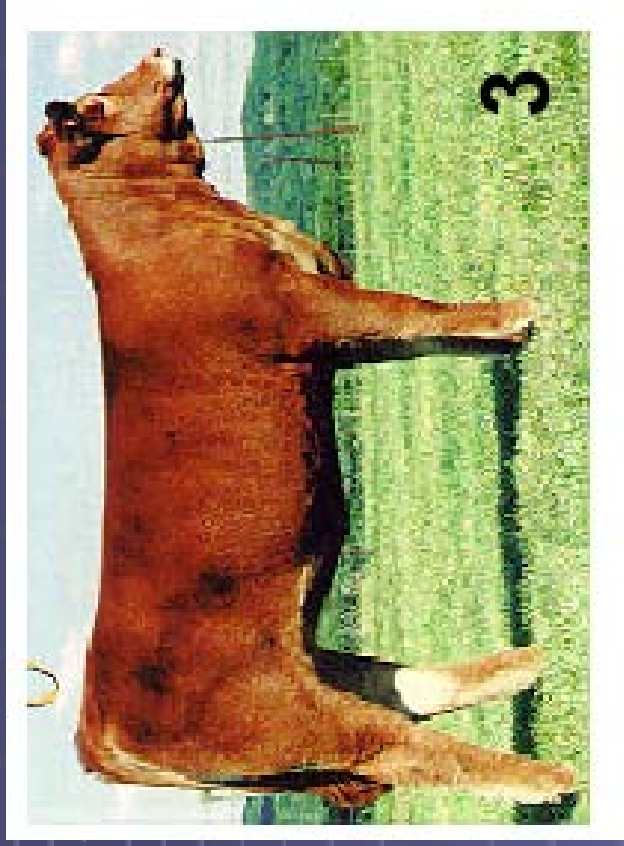
#4



EPDs:

BW	WW	YW	MA	SC
1.2	14	26	6	.2

#5



EPDs:

BW	WW	YW	MA	SC
2.5	18	32	12	.22

#6



EPDs:

BW	WW	YW	MA	SC
1.0	12	22	6	.4

#7



EPDs:

BW	WW	YW	MA	SC
2.0	17	30	3	.2

#8



EPDs:

BW	WW	YW	MA	SC
3.1	22	43	7	.2

Questions?

