

## Basic Swine Management

1. Provide shelter for your pig.



2. Provide shade for outside housed pigs.



3. Keep clean and dry bedding for your pig.



4. Provide fresh clean water at all times.



5. Keep your feed clean and fresh.



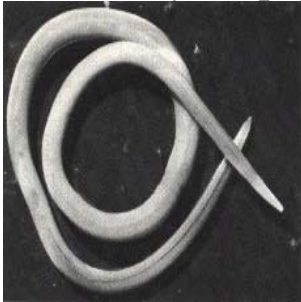
P-1A

P-2A

6. Exercise your pig and practice showmanship at home.



7. Worm your pig.



8. Pigs housed on dirt need wormed more often.



9. Keep your pig cool during warm weather.

