



1200



1090

Angus Yearling bulls (with weights)



1275



1205

Questions:

- A. Which bull most nearly combines style balance power and dimension into one package?
- B. Excluding 3 which bull is the levellest topped?
- C. Which bull has too much set in his hock and rear leg?
- D. Which bull is the shallowest bodied?
- E. Which is the pounds light low performing bull?
- F. Between 1 & 4 which bull is longer?
- G. Between 1 & 4 which bull is deeper roomier middled bull?
- H. Between 1 & 4 which bull is longer necked and has more extension out of his front end?
- I. The tagged pair of bulls?
- J. Of 1 & 2 which bull has the body type of the 3 & 4 bulls?

ANSWERS:      A. 3    B. 1    C. 2    D. 1    E. 2    F. 1    G. 4    H. 4    I. 1&2    J. 2

PLACING      3-4-1-2 with cuts of 6-4-3



1202



1209

Angus Yearling bulls II (with weights)



1060



1240

Questions:

- A. Between 1 & 2 the longer bull?
- B. Between 1 & 2 the deeper sided bull?
- C. The heaviest boned bull between 1 & 2?
- D. The bull between 1 & 2 that is more extended out of his front end with a cleaner, longer neck while being stronger topped?
- E. Which is the pounds light low performing bull?
- F. The high performing bull in the class?
- G. The heaviest muscled bull in the class?
- H. The heavy shouldered bull?
- I. The slack topped bull that is weak and pinched in his fore rib?
- J. The heavy sheathed bull?

ANSWERS:      A. 1    B. 2    C. 2    D. 1    E. 3    F. 4    G. 4    H. 4    I. 4    J. 4

PLACING      1-2-4-3 with cuts of 1-4-7



560

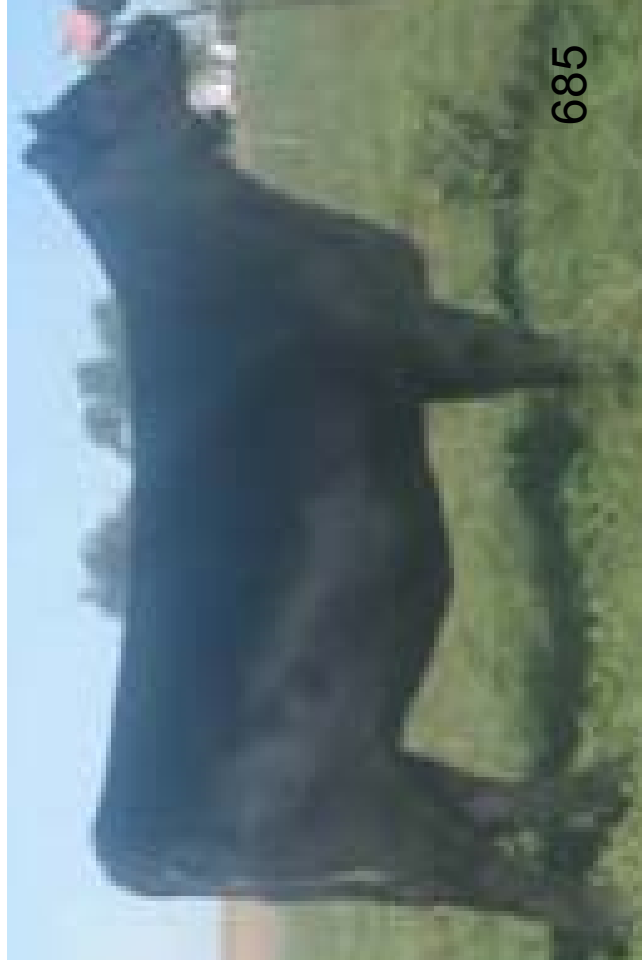


550

ANGUS HEIFER CALVES (with weights)



565



685

Questions:

- A. Which heifer most nearly combines style, balance, elegance of design and dimension into one package?
- B. Between 1,2 &3 which heifer is the sharpest fronted being cleaner and longer in the neck?
- C. The over conditioned heifer?
- D. The heifer that is cut up in her fore flank?
- E. Which is the pounds light heifer?
- F. Between 2 & 3 which heifer is deeper centered?
- G. Between 2 & 3 which heifer is cleaner naveled?
- H. The highest WDA heifer?
- I. The tagged heifers?
- J. Between 1 & 3 which heifer has less leather in her neck?

ANSWERS:      A. 4   B. 2   C. 1   D. 2   E. 2   F. 2   G. 2   H. 4   I. 1&3   J. 1

PLACING      4-2-3-1 with cuts of 7-3-2



1325



1235

Angus yearling bulls IV (with weights)



990



1400

Questions:

- A. The heavy WDA bull in the class?
- B. Between 1 & 4 which bull is the sharpest fronted being cleaner and longer in the neck?
- C. The longer bull between 1 & 4?
- D. Given the weights the thicker heavier muscled bull between 1 & 4?
- E. Which is the pounds light bull?
- F. The short bodied bull?
- G. The tagged bull?
- H. The bull that toes out in front?
- I. The bull that is set in his hock and also appears to be cow hocked?
- J. Between 2 & 3 which bull is typier and more structurally correct?

ANSWERS:      A. 4   B. 1   C. 1   D. 4   E. 3   F. 3   G. 4   H. 2   I. 2   J. 3

PLACING      1-4-2-3 with cuts of 2-5-2