

# Supplemental Information and Activity for “All Goats Are Not the Same!”

By Jo Ellen Roehrig and Susan Kerr

## DAIRY GOATS

### Alpine

Alpine and French Alpine describe the same dairy goat breed. Does are a minimum of 30" at the withers and 135 pounds, bucks, 32" and 170. The only breed of any color pattern with upright ears, their hair is medium to short; their face is straight. Faults include Roman nose, Toggenburg color and markings or all white. Alpine colors are described using these terms:

COU BLANC (coo blanc - "white neck") white front quarters, black hind legs and rump, black or gray markings on the head

COU CLAIR (coo clair - "clear neck") front quarters of tan, saffron, off-white, or shading to gray, with black hind legs and rump

COU NOIR (coo nwah - "black neck") black front quarters and white hind legs and rump

SUNDGAU (sundgow) black with white markings -- belly, facial stripes, etc.

PIED – spotted

CHAMOISEE (shamwahzay) brown or bay; black face, dorsal stripe, feet and legs, and sometimes a band running over the withers and down to the chest. Spelling for buck is chamoise

TWO-TONE CHAMOISEE - light front quarters with brown or gray rear legs and rump.

Any change in the above patterns broken with white should be described as a broken pattern, such as a broken cou blanc.

### LaMancha

The LaMancha goat was developed in the U.S. Does must be a minimum of 28" and 130 pounds; bucks, 30" and 160 pounds. This breed has good milk production with high butterfat. The LaMancha face is straight, with the ears being the obvious breed feature. There are two types of LaMancha ears. The "gopher ear" has a length of 1" at most, but preferably none, with little or no cartilage. The end of the ear must turn up or down. Bucks must have this type to be registered. The "elf ear" is 2" long at most; the end must turn up or down; cartilage shaping the small ear is allowed. The hair is short, fine and glossy. Any color or combination is acceptable.

### Nubian

The Nubian is of mixed Asian, African, and European origin, known for high butterfat milk. The same size requirement apply as for Alpines. The head is the most easily noticed breed feature, with the side view of the face between the eyes and the muzzle being curved outwards (convex or Roman nose). The ears are long (extending at least 1" past the muzzle when held flat along the face), wide and hanging down (pendulous). They lie close to the head at the temple, flaring slightly out and forward at the round tip, forming a "bell" shape. The hair is short, fine, and glossy. Any color or colors, solid or patterned, is acceptable.

### Oberhasli

The Oberhasli is a Swiss dairy goat. Its color is chamoisee. Does may be black, but chamoisee is preferred. Chamoisee is bay, from light to deep red -- deeper more desirable. A few white hairs through the coat are accepted. Black markings are: stripes down the face from above each eye to black muzzle; forehead; stripes from the base of each ear, coming to a point behind the poll, a dorsal stripe to the tail; belly; and legs below the knees and hocks. Udder is gray to black. Ears are black inside and bay outside. Bucks may have more black on the head than does, black whiskers and black hair along shoulders and lower chest, with a cloak of black along the back. Does are a minimum of 28" and 120 pounds; bucks must be 30" and 150 pounds. The face is straight or dished. A Roman nose is faulted.

### Saanen

The Saanen dairy goat originated in Switzerland. Having the same size requirements as Alpines and Nubians, it shows strength with sturdy bone. Does should be feminine. Saanen are white or light cream color, with white preferred. Spots on the skin are not a fault. Small spots of colored hair are allowed, but not desirable. The hair is short and fine; a fringe over the spine and thighs may be present. Ears are erect and point forward. The face is straight or dished. A Roman nose is faulted.

### **Sable**

Sables are purebred or American colored Saanens, sharing the same heritage, size, and conformation. They are the result of two recessive genes and can be any color or combination, solid or patterned, except white or light cream. The breed was recognized by ADGA in January 2005.

### **Toggenburg**

The Toggenburg is a dairy goat from the Toggenburg Valley of Switzerland. This breed has the smallest height and weight minimums: 26" and 120 pounds for does and 28", 150 pounds for bucks. The hair is short to long, soft, and fine. Its color is solid, varying from light fawn to dark chocolate with no preference for any shade. Distinct white markings are as follows: white ears with dark spot in middle; two white stripes down the face from above each eye to the muzzle; hind legs white from hocks to hooves; forelegs white from knees downward with dark vertical stripe below knee acceptable; a white triangle on each side of the tail; white spot may be present at root of wattles or in that area if no wattles are present. Cream markings instead of pure white are acceptable, but not desirable. The ears are erect and carried forward. Face may be dished or straight, never Roman.

### **Nigerian Dwarf**

The Nigerian Dwarf is a miniature dairy breed of West African origin. Their body type is similar to larger standard dairy breeds, but they are no taller than 22.5" (does) or 23.5" (bucks). They can be any color, with erect ears, and a straight or dished face. They were recognized by ADGA in January 2005.

### **Golden Guernsey**

This rare breed is from the Channel Islands. It is known for its color, which ranges from pale to deep gold. The hair coat can be long or short. It is medium-sized and has a gentle disposition. Milk yield, butterfat and protein levels are good for their size. The head is dished or straight. Ears are erect and some have a slightly curled tip.

### **Recorded Grades and Experimentals**

These provide an opportunity to "grade up" to American status. They can be a combination of standard sized dairy breeds recognized by ADGA. Any animal with known non-dairy or dwarf breeding in its pedigree cannot be recorded with ADGA. More information is available in the Glossary and the *ADGA Guidebook*.

## **FIBER GOATS**

### **Angora**

Angora goats originated in the Himalayan Mountains. Generally white, their fiber is known as mohair, from an Arabic word meaning "select" or "choice". Mohair is long, strong, warm and lustrous. Angoras are shorn twice a year, as their fleece grows about 12" (8-12 pounds) annually. They weigh 80-120 pounds when mature.

### **Cashmere-type**

Cashmere is not a breed but a description of all goats that produce cashmere, a very fine fiber. They come in many colors, but solid colors are preferred. Cashmere down is white, brown or gray. Cashmere-type goats were imported into the U.S. from Australia and New Zealand in the 1980s. They are sheared once a year and a mature buck will yield up to 2.5 pounds of fleece. The fleece consists of two kinds of fiber, cashmere and guard hairs. It is separated by a commercial process and yields approximately twenty percent cashmere.

## **MEAT GOATS**

### **Boer**

Boers are meat goats developed in South Africa. They are large-framed animals usually with a white body, reddish-brown head and a white blaze. They have long ears that hang down. Mature males weigh between 200 and 350 and females 150 to 200 pounds. They have a broad chest and heavy muscling.

### **Kiko**

Kiko meat goats originated in New Zealand. They are large and usually white or cream, but colors are acceptable. These animals are known for their hardiness and survivability in rugged environments.

### Myotonic/Wooden Leg/Fainting Goat

Myotonic, Wooden Leg, Stiff Leg or Fainting goat are all names for this rare breed developed in the U.S. Due to a recessive gene, when these goats are excited or frightened, their muscles contract and they often “faint” (fall over) for a few moments. These stocky, heavily-muscled animals are usually black and white. They breed out of season, are good mothers and milk producers, can kid twice a year and are quite athletic.

### DUAL PURPOSE

#### Pygmy

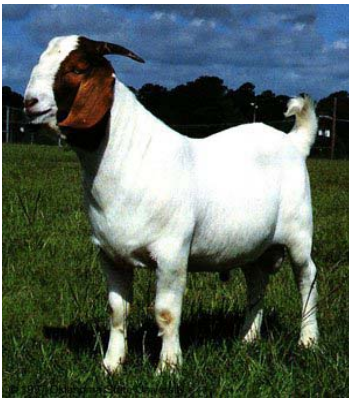
Pygmy goats originated in Africa and are smaller than any other recognized breed in the U.S. A full-grown buck stands less than 23.6" and does less than 22.4". They weigh less than 60 pounds, are short-legged and very wide and muscular. Many colors are accepted and they are used for meat, milk, pets or research.

#### Kinder

The Kinder goat was developed within the last 20 years in Washington State. This dual-purpose breed resulted from breeding a Pygmy buck to Nubian does with selection for small yet efficient animals. They produce a good amount of milk for their size and convert feed to milk well. Some Kinders are able to give birth to triplets twice a year. Kids gain rapidly and wethers are respectable meat animals.

### ACTIVITY

Using the breed descriptions above, identify these breeds. Write the name of the breed on the line below the picture. Answers in the box at the end of the activity. Photos not otherwise noted are from the Oklahoma State University Breeds of Livestock Web site at [www.ansi.okstate.edu/breeds/goats](http://www.ansi.okstate.edu/breeds/goats).



A. \_\_\_\_\_



Photo provided by Susan Kerr

B. \_\_\_\_\_



© Oklahoma State University  
Provided by Crystal D'Eon

C. \_\_\_\_\_



From [www.sabledairygoats.com](http://www.sabledairygoats.com)

D. \_\_\_\_\_



E. \_\_\_\_\_



F. \_\_\_\_\_



G. \_\_\_\_\_



H. \_\_\_\_\_



I. \_\_\_\_\_



J. \_\_\_\_\_



provided by Dave Battjes



provided by Carolyn Futrell

K. \_\_\_\_\_

L. \_\_\_\_\_



provided by Dr. An Peischel



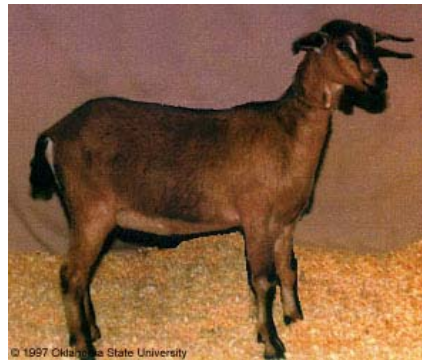
© 1997 Oklahoma State University

M. \_\_\_\_\_

N. \_\_\_\_\_



© 1997 Oklahoma State University



© 1997 Oklahoma State University

O. \_\_\_\_\_

P. \_\_\_\_\_

- |                    |
|--------------------|
| <b>ANSWERS</b>     |
| A. Boer            |
| B. Nubian          |
| C. Alpine          |
| D. Sable           |
| E. Saanen          |
| F. Angora          |
| G. Nigerian Dwarf  |
| H. Pygmy           |
| I. Cashmere-type   |
| J. Toggenburg      |
| K. Oberhasli       |
| L. LaMancha        |
| M. Kiko            |
| N. Golden Guernsey |
| O. Fainting Goat   |
| P. Kinder          |