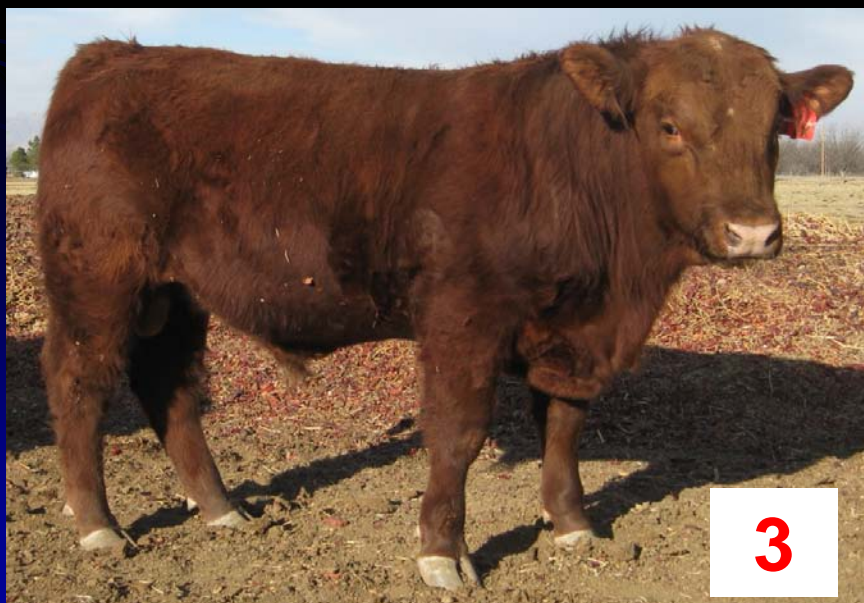


# Aug. 2011 EPD Red Angus Bulls



# EPD's

## Bull #1

CED	BW	WW	YW	MILK	STAY	MAR B	YG	CW	REA	FAT
9	-2.4	19	57	17	11	-0.01	-0.08	16	-0.08	-0.01

## Bull #2

CED	BW	WW	YW	MILK	STAY	MAR B	YG	CW	REA	FAT
11	-3.9	21	59	14	10	-0.12	-0.08	18	-0.06	-0.01

## Bull #3

CED	BW	WW	YW	MILK	STAY	MAR B	YG	CW	REA	FAT
7	0.3	31	60	17	10	-	-	-	-	-

## Bull #4

CED	BW	WW	YW	MILK	STAY	MAR B	YG	CW	REA	FAT
7	0.6	33	63	8	10	.06	-	-	-.04	.01

# Scenario

These bulls will be used by large commercial ranchers operating under rugged range conditions.

These bulls will be mated to Hereford x Angus cross heifers and cows, and will be used as terminal sires. Calves will sold at weaning time.

On these commercial farms, feed resources are adequate to maintain an 1100 lbs cow in average body condition.

Rank these bulls according to the EPD's, Scenario and visual judging.