

# Beef Cattle Showmanship

Paul Maulsby

# What is Showmanship?

- Preparing and displaying a cattle project to its best advantage, highlighting its strong points and minimizing its weaker points.

# Characteristics of a Good Showman

- The exhibitor and the animal are clean and well presented.
- Aware of when the judging is and is at the ring promptly.
- Follows instructions issued by judge, clerk, or ring steward.
- Courteous at all times to judge and fellow showmen.

# Characteristics of a Good Showman

- Gives undivided attention to animal while in the ring. Talking to family and friends is only practiced by poor showmen.
- Prepared to give accurate and prompt answers concerning animal.
- Aware of the location of the judge at all times.
- Exhibitors body does not obstruct the view of the judge.

# Characteristics of a Good Showman

- Maneuvers the animal into improved positions for the benefit of the judge prior to, not during, the inspection.
- Confident attitude and recognizes that the animal is being exhibited, not the exhibitor.
- Avoids having animal come into contact with fellow exhibitors and allows for adequate room.

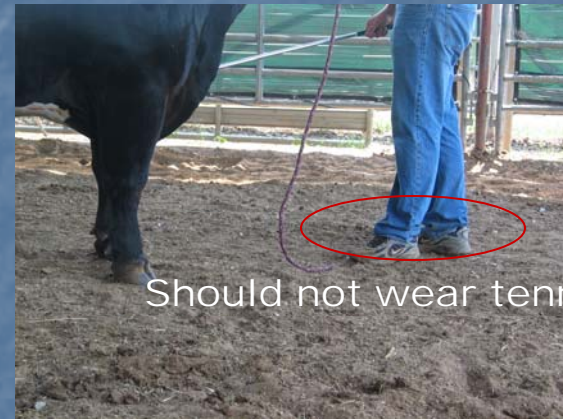
# Characteristics of a Good Showman

- Exhibitor is a modest winner and a gracious loser. Winners of Reserve position always offer congratulations to the Champion.
- Does not leave the class until it is placed and records are complete.

# Showman's Attire



Should have a comb



Should not wear tennis shoes



Should not wear a cap

Should wear appropriate attire

# Showman's Attire

Collared Shirt  
Clean Jeans  
Belt  
Boots



Comb in back pocket with  
teeth of comb turned to  
the inside



# Proper Adjustment of the Halter

- Lead the calf from the left side
- Show stick should be in the left hand
- Don't coil lead strap up around hand or let drag
- Cut off unnecessary lead rope length
- Lead rope should hang 18-24 in from where it is held with the right hand

# Proper Halter Adjustment



Correct placement



Nose strap too high



Nose strap too low

# Proper Halter Placement



Lead rope correct side  
(left side of calf)



Lead rope incorrect side

# Proper Show Halter Adjustment



# Leading the Calf and Show Stick Use

- Show stick should be held in left hand and should be comfortable and functional
- When walking, the point of the stick should be pointed downward and outside
- When instructed to stop, the exhibitor should turn to the inside of animal and face the rear in a smooth, natural motion

# Leading the Calf and Show Stick Use

- Change the show stick to the right hand and the lead strap to the left
- Remain on the left side of the animal
- Holding the lead close to the animal's head can help control the calf

# Holding the Show-Stick Properly



Show Stick Pointed Downward  
Correct



Show Stick Upward  
Incorrect

# Setting Up the Animal

- When head to tail, the exhibitor should keep the animal directly behind the one in front
- Allow 3 to 5 feet between animal in front
- When pulling into line side-by-side, line up as straight as possible and align the front end with first person in line
- Good spacing is very important
- If crowded by a fellow exhibitor, move animal to an area with more space

# Positioning the Show Animal Side Profile



Back feet offset

Front end correct placement

Correct Feet Placement

# Positioning the Show Animal Side Profile



Correct Foot Placement

# Positioning the Show Animal Side Profile



Incorrect Foot Placement

# Positioning the Show Animal Side Profile



Incorrect Foot Placement and Running Downhill

# Positioning the Show Animal Head Placement



Head too high

# Positioning the Show Animal Head Placement



Head placement  
too low

# Positioning the Show Animal Head Placement



Correct head placement

# Rear Leg Placement



Foot placement too close -  
base width more narrow

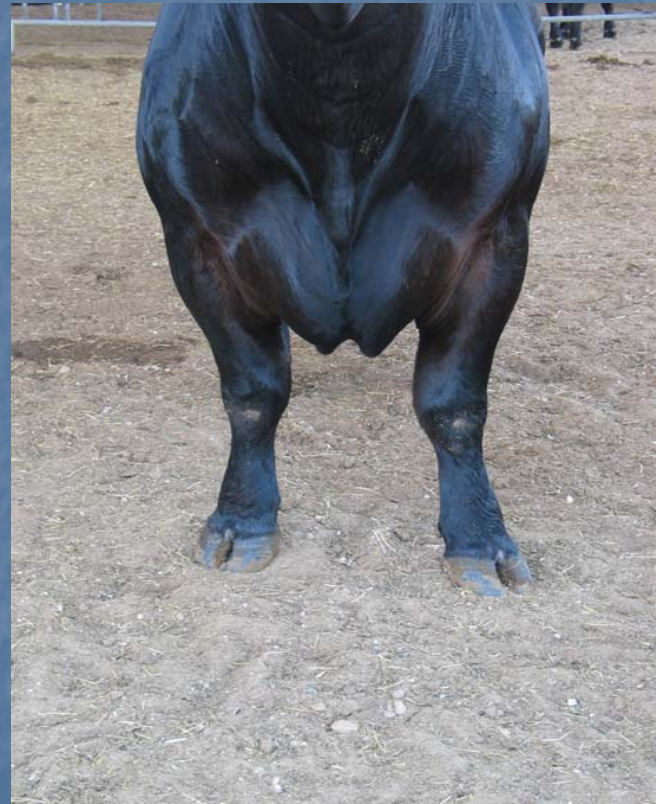


Foot placement wider set  
- shows more base width

# Front Leg Placement



Correct as possible  
for the structure of calf



Incorrect (too wide)

# Good Showmanship Means SUCCESS

